



Hand nozzles

Quick glance at hand nozzles	18	Hand nozzle shutoffs without pistol grip.....	74
Dual pressure hand nozzles	20	Hand nozzle shutoffs with pistol grip	75
Adjustable flow rate and stream patterns hand nozzles.....	22	Waterwall nozzles.....	76
Adjustable flow rate and stream patterns hand nozzles.....	36	Anti-recoil elbows.....	77
Adjustable flow rate and stream patterns hand nozzles.....	37	Hand nozzles - Accessories	79
Autoregulated pressure hand nozzles with slide valve.....	38	Hand nozzles - Foam attachments	81
Autoregulated pressure hand nozzles with ball valve	44	Nozzle branchpipe adapters	83
"Victory" Hand nozzle.....	50	Smooth bores	84
Hand nozzles with fixed flow rate and adjustable stream pattern	51	Diffusers DMA and DMB.....	86
Hand nozzles - Colour options	58	Multi-purpose nozzles	87
Fixed flow rate and adjustable stream pattern hand nozzles for marine environment	59	Nozzles for oil industry.....	87
Adjustable flow rate and stream patterns hand nozzles for marine environment	60		
Adjustable flow rate and stream patterns hand nozzles.....	63		
High-pressure nozzles.....	64		
Specific use hand nozzles	66		

Our hand nozzles, monitors, foam equipments, and dividers, can be equipped with any type of existing coupling manufactured by POK using the best materials.



	Slide-o-matic	Magilite - Debolite Turbolite	Magikador - Debikador Turbokador	Cooler	Magikaracho - Debikaracho Turbokaracho	Legende 400/500	Legende for electrical fires	Legende with combined stream patterns	Legende 600/750/1000	Maximatic - Autokador Tornadomatic	Victory	Pokinor - Pokatak Pokador	Legende - Fixed flow rate	Pokabronze	Turbokabronze	Turbokador 500 for electrical fires Marine type	Turbokador 500	Turbokador 500 for electrical fires	Criquet	Damster	
Flow rate (lpm)	600	150	150 500 750 1000	200		400 500	400 500	400 750	600 750 1000	150 500 750 1000	250	150 500 750 1000	500	500 1000	500	500	500	500	100	100	
Flow rate (GPM)	150	40	95 125 200 250		30 60 95 125									60 95 125 250	95 125						
Working pressure (bar)	6	6	6	6	6	6	6	7	6	6 - 7	7	5 à 7	6	6		6	6	6	40	40	
Working pressure (PSI)	100	100	100		100									100	100						
Maximum working pressure (bar)	16	16	16	16	16	16	16	16	16	16	16	16	16	16	16	16	16	16	20	20	
Pressure regulation	•	•	•																		
Adjustable flow rate	•	•	•																		
Adjustable stream pattern	•	•	•	•	•	•	•	•	•	•		•	•	•	•	•	•	•	•	•	
Stream pattern type	0 30° 130°	0 30° 130°	0 30° 130°	0 30° 130°	0 35° 100°	0 30° 130°	0 30° 130°	0 30° 130°	0 30° 130°	0 30° 110°	0	0 30° 110°	0 30° 130°	0 30° 110°	0 30° 110°	0 30° 130°	0 30° 130°	0 30° 130°	0 30° 130°	0 30° 130°	
Material	Alu	Alu	Alu	Alu	Alu	Alu	Alu	Alu	Alu	Alu	Alu	Alu	Alu	Bronze	Bronze	SS Alu Bronze	SS Alu	SS Alu	Alu	Alu	
Hard anodisation	•	•	•	•	•		(•)	(•)	(•)	•	•	•					•	•	•	•	
Polyester coating						•	(•)	(•)	(•)				•							•	
Electrical fires							•									•				•	
Swivelling inlet coupling	•	•	•	•	•	•	•	•	•	•	•	•	•	•	•	•	•	•	•	•	
Ball valve	•	•	•	•	•					•	•	•									
Slide valve	•					•	•	•	•	•			•								
Flush function	•	•	•	•	•	•	•	•	•	•			•	•	•	•	•	•	•	•	
ECO body	•	•	(•)					(•)	(•)												
Molded teeth	•	•	•		•			•	•					•						•	
Cut teeth	•	•	•		•	•	•	•	•	•			(•)							•	
Spinning teeth	•	•	•	•	•	•	•	•	•	•			(•)		•	•	•	•		•	
Smooth head																					
Double pistol grip			(•)						(•)	(•)			(•)								
OPTIONS	LE ME	LE ME AE	LE ME			LE ME	LE ME	LE ME	LE ME	LE ME		LE ME	LE ME	LE ME	LE ME	LE ME	LE ME	LE ME	LE ME	AE CS	AE
Sheath colours	●●●●	●●●●	●●●●	●	●	●●●	●	●●●	●●●	●●●●	●	●●●●	●	●	●	●	●	●	●	●●●●	
Page	page 21	page 23	page 24-page 35	page 27	page 36	page 39	page 40	page 41	page 42-page 43	page 45-page 49	page 50	page 52-page 56	page 57	page 59	page 60	page 61	page 62	page 62	page 64	page 64	

Options: LE - Low expansion foam attachment, ME - Medium expansion foam attachment, CS - Carrying strap, AE - Adjustable elbow (•): Depending on reference

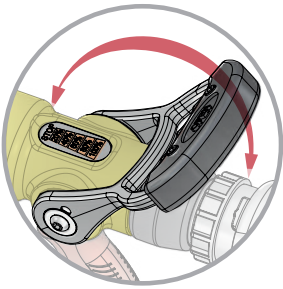
Quick glance at hand nozzles



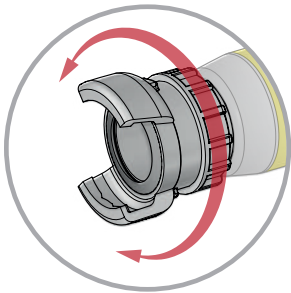
	Aquastar	I-POK	I-POK S	Optimal Nozzle	Pokador 150 80 mm version	Galaxie	Chinajet 12	Flash	"Belier" nozzle	Fog application nozzle	"Feux de cheminée" nozzle	Pouring spouts	"Gerico" nozzle	Shutoffs	Waterwall nozzles	Elbows & accessories	Foam attachments	Branchpipes adapters Smooth bores Nozzle with shutoff
Flow rate (lpm)	90 100 120 150 220 225	150	150	240	115	480	720	100 240 400	100 250 460 560	460	25		640		300 to 1800			
Flow rate (GPM)																		
Working pressure (bar)	20			6	5	6	6	6	5-7	6	6		6		6-8			
Working pressure (PSI)																		
Maximum working pressure	40	16	16	16	16	16	16	16	16	16	16	16	16	16	16			
Pressure regulation																		
Adjustable flow rate	•	•	•	•	•	•	•											
Adjustable stream pattern	•	•	•	•	•	•	•	•										
Stream pattern type	0 30° 130°	0 30° 130°	0 30° 130°	35° 55°	0 30° 130°	0 30° 130°	0 30° 130°	0 30° 130°	40° 60° 120°						180°			
Material	Alu SS	Alu	Alu	Alu	Alu	Alu	Alu	Alu	SS	Alu SS	Alu	Alu	SS	Alu Bronze	Alu SS	Alu	Alu	
Hard anodisation	•				•						•			(•)		(•)		
Polyester coating		•	•	•		•	•	•						(•)	(•)	(•)	•	
Electrical fires																		
Swivelling inlet coupling	•	•	•	•	•	•	•	•			•							
Ball valve	•				•	•	•	•	(•)		•							
Slide valve		•	•	•														
Flush function	•	•	•		•	•												
ECO body							•	•										
Molded teeth		•	•		•		•											
Cut teeth																		
Spinning teeth	•					•												
Smooth head				•				•										
Double pistol grip														(•)				
OPTIONS		AE CS	AE CS	CS														
Sheath colours	••••	••••	••••	•	••••	••••	••••	•		••••	••••							
Page	page <?>	page 63	page 63	page 66	page 66	page 67	page 68	page 68	page 69-page 70	page 71	page 72	page 72	page 73	page 74-page 75	page 76	page 77-page 80	page 81-17	page 83-page 87

Options: LE - Low expansion foam attachment, ME - Medium expansion foam attachment, CS - Carrying strap, AE - Adjustable elbow
 (•): Depending on reference

Shutoff handle with polyurethane cover. Shutoff with slide valve, opening indexed at 20%, 40%, 60%, 80% of the flow rate and 100% when pushed fully to the stop.



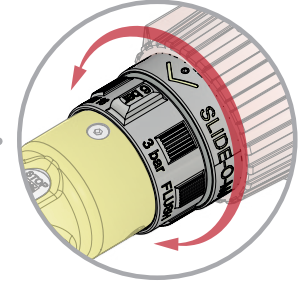
Swivelling inlet coupling compliant with international norms



Conform to norm
EN 15182-2

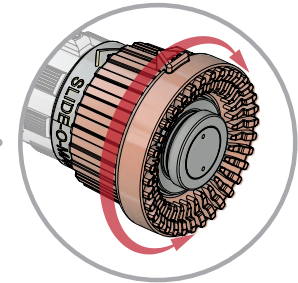


Selection ring to operate the nozzle at 6 or 3 bar while keeping the same flow rate when fully opened. FLUSH position at the stop limit of the selection ring.



Polyurethane anti-shock head sheath with tactile markings indicating the different stream patterns on 3 positions:

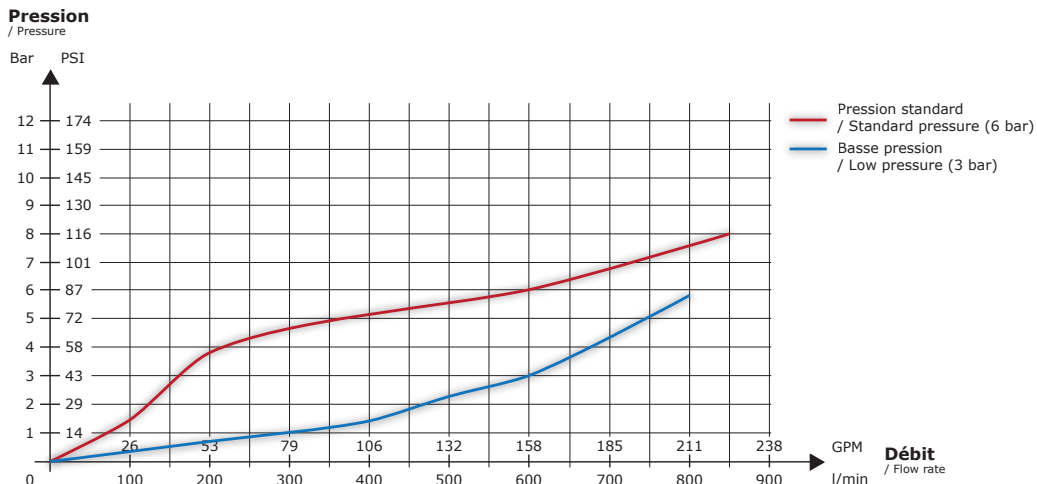
- straight spray,
- attack spray (30°)
- full fog diffusion (130°)



TECHNICAL CHARACTERISTICS

- **The flow rate** is adjusted by operating the shutoff handle which allows to go from the closed position, to the fully opened maximum flowrate position, going **through four intermediate flow rates** corresponding to 20% of the maximum flow rate for the first setting, 40% of the maximum flow rate for the second, 60% of the maximum flow rate for the third and 80% of maximum flow rate for the fourth.
- **A selection ring allows the user to operate the nozzle at a pressure of 6 or 3 bar** while keeping the same flow rate when the shutoff is fully opened. This ring also has a third position marked PURGE or FLUSH which allows the removal of particles which could interfere with the proper hydraulic operation of the hand nozzle.
- **Adjustable stream pattern** : The rotation of the indexed head ring allows the user to progress from a **straight spray** to a **narrow spray of 32°**, called "Flash Over", to a **full fog diffusion cone of 130°** forming a water wall. Tactile and visual indicators allow the user to know the stream type in total darkness even while wearing firefighting gloves in compliance with the EN 649 norm.
- **Swivelling inlet coupling.**
- Maximum working pressure **PN16**.
- **Shutoff with adjustable flow rate** with extremely sturdy handle, piston, stainless steel screws and bolts.

FLOW RATE/PRESSURE GRAPH - For the 600 lpm version



CONSTRUCTION

- Construction in **aluminium alloy AGS T5**, new primary alloy, extremely light.
- Resistant to mechanical shocks and chemical attacks thanks to **50µ hard anodisation**.
- Head shock protection by a **polyurethane head sheath**. This elastomer does not melt when heated, is an excellent insulator which allows the user to work under high heat conditions without getting burnt, and does not stick to fingers in low temperatures.
- Very ergonomic, anti-slip (polyurethane) pistol grip.
- Stainless steel axles and screws.

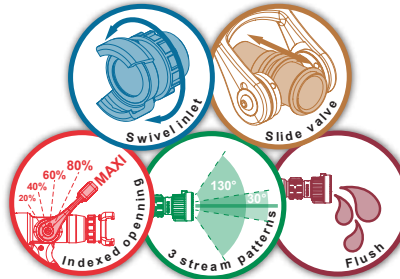
Dual pressure hand nozzle



Our "Slide-O-Matic" hand nozzle range with dual pressure regulation is equipped with a selection ring, allowing for use at 3 or 6 bar, without interrupting the flow, by simply rotating the ring.

The different flow rates are selectable through an axial shutoff.

The head ring with tactile markings allows different spray pattern selection (straight spray, flash over and wide angle spray).



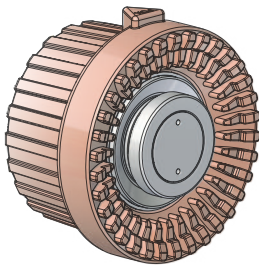
Maximum working pressure: PN16
Shutoff: with slide valve
Opening: by operating handle
Flush position: yes
Pressure regulation: from 200 to 600 lpm
Material: aluminium alloy
Surface treatment: hard anodisation
Body type: molded
Pistol grip : single

Options: low expansion foam attachment, medium expansion foam attachment.

Sheath colours: ●●●●●

**Compliant with the norm
EN 15182-2**

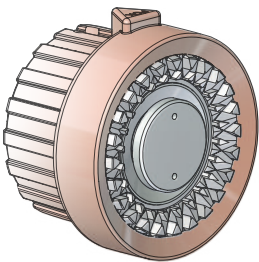
SLIDE-O-MATIC 600 - molded rubber teeth



Inlet	Flow rate	Working pressure	Dimensions (mm)	Weight (kg)	Ref.
DSP DN40	600 lpm	3/6 bar	349 x 126 x 258	3.2	27265
Swivelling 1.5" female NST-NH	150 GPM	50/100 PSI	304 x 126 x 258	3.1	27655

Compatible with the low expansion ref. 27487 and medium expansion ref. 44308 foam attachments

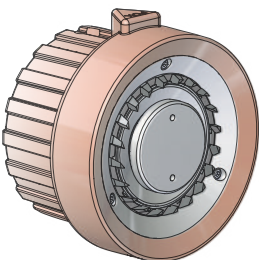
SLIDE-O-MATIC 600 - cut teeth



Inlet	Flow rate	Working pressure	Dimensions (mm)	Weight (kg)	Ref.
DSP DN40	600 lpm	3/6 bar	349 x 126 x 258	3.2	29113
Swivelling 1.5" female NST-NH	150 GPM	50/100 PSI	304 x 126 x 258	3.1	29285

Compatible with the low expansion ref. 27487 and medium expansion ref. 44308 foam attachments

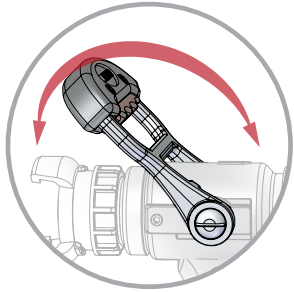
SLIDE-O-MATIC 600 - spinning teeth



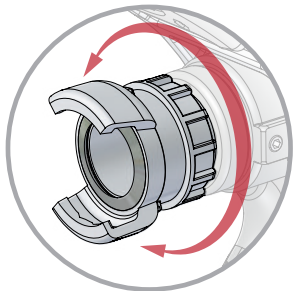
Inlet	Flow rate	Working pressure	Dimensions (mm)	Weight (kg)	Ref.
DSP DN40	600 lpm	3/6 bar	349 x 126 x 258	3.2	29100
Swivelling 1.5" female NST-NH	150 GPM	50/100 PSI	304 x 126 x 258	3.1	29281

Compatible with the low expansion ref. 27487 and medium expansion ref. 44308 foam attachments

Shutoff handle with polyurethane cover. Ball valve shutoff with quick and progressive opening and closing.



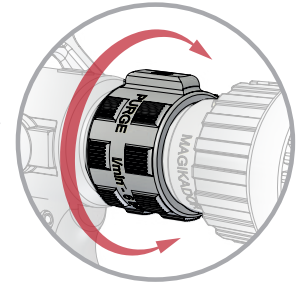
Swivelling inlet coupling compliant with international norms



Conform to norm
EN 15182-2

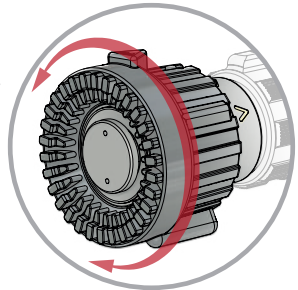


Flow rate ring allowing selection of preset flow rates at reference pressure (6 bar). "FLUSH" position at the end of the flow rate selecting ring. The tactile marker indicates the highest flow rate.



Polyurethane anti-shock head sheath with tactile markings indicating the different stream patterns. Stream pattern selection on 3 positions:

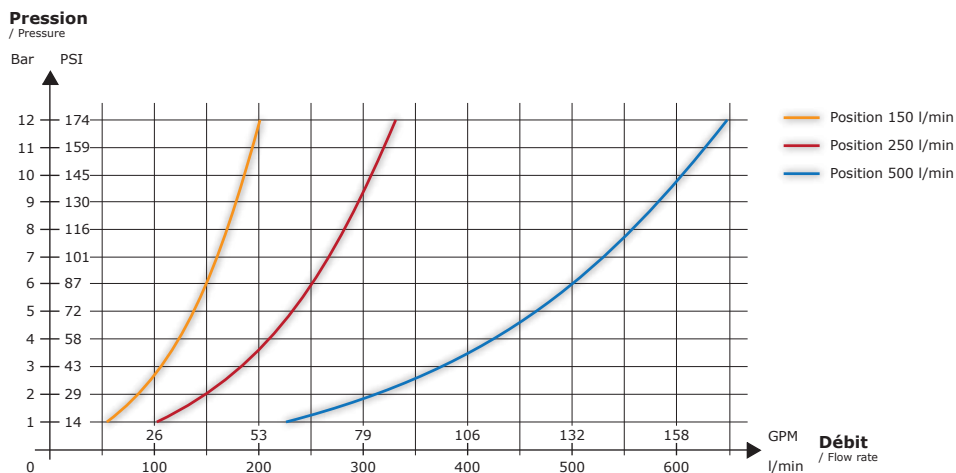
- straight spray,
- attack spray(30°)
- full fog diffusion (130°)



TECHNICAL CHARACTERISTICS

- **Flow rate and flush** adjusted by rotating the flow rate selecting ring. The available flow rates are engraved on the flow rate selecting ring. By rotating the ring to the desired setting, the flow rate will be set to this value at **6 bar**, reference pressure. A tactile indicator allows the user to identify the maximum flow rate setting even in total darkness and while wearing firefighting gloves **in compliance with the norm EN 659**.
- The flow rate selecting ring also has a position marked "PURGE" (or FLUSH). In this position the valve is pulled away from the nozzle, which allows the removal of particles which could interfere with the proper hydraulic operation of the nozzle.
- **Adjustable stream pattern** : The rotation of the indexed head ring allows the user to progress from a **straight spray** to a **narrow spray**, also called "Flash Over", to a **full fog diffusion cone of 130°** forming a water wall. The **Tactile and visual indicators** allow the user to know the type of spray in total darkness even while wearing firefighting gloves in compliance with the EN 659 norm.
- **Swivelling inlet coupling**.
- **Protection filter** against pebbles at the inlet coupling.
- Maximum working pressure **PN16**.
- Quick Open/Closed shutoff valve.

FLOW RATE/PRESSURE GRAPH - For the 500 lpm version



CONSTRUCTION

- Construction in **aluminium alloy**, new primary alloy, extremely light.
- Resistant to mechanical shocks and chemical attacks thanks to **50µ hard anodisation**.
- Head shock protection by a **polyurethane head sheath**. This elastomer does not melt when heated, is an excellent insulator which allows the user to work under high heat conditions without getting burnt, and does not stick to fingers in low temperatures.
- Very ergonomic, anti-slip (polyurethane) pistol grip.
- Stainless steel axles and screws.

Adjustable flow rate and stream patterns hand nozzles



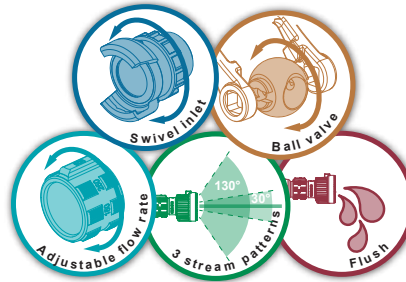
Our 150 lpm adjustable flow rate and spray pattern hand nozzles exist in 2 versions, "lite" and "kador". The "lite" version brings light weight and simplicity. The calibrated flow rates are easily selectable by means of an indexed ring. The tactile marker indicates the highest flow rate. The indexed head ring with tactile markings allows the adjustment of the different stream patterns (straight spray, attack spray, and wide angle spray). This range of nozzles is available with three different head types : Turbo (spinning teeth), Debi (cut teeth) and Magi (molded rubber teeth).

Maximum working pressure: PN16
Shutoff: ball valve
Opening: by operating handle
Flush position: yes
Material: aluminium alloy
Surface treatment: hard anodisation
Body type: molded
Pistol grip : single

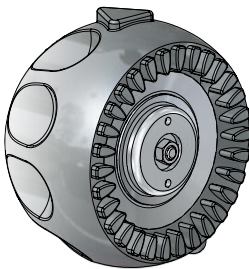
Options: low expansion foam attachment, medium expansion foam attachment.

Sheath colours:

**Compliant with the norm
EN 15182-2**



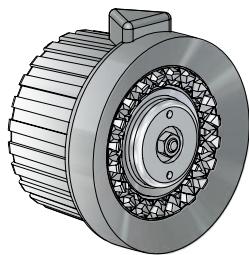
MAGILITE



Inlet	Flow rate	Working pressure	Dimensions (mm)	Weight (kg)	Ref.
GFR female DN20	40-75-100-150 lpm	6 bar	306 x 95 x 224	1.5	18364
1" female NST-NH	10-20-25-40 GPM	100 PSI	260 x 95 x 224	1.4	18375
1" female BSP	20-50-100-150 lpm	6 bar	260 x 95 x 224	1.4	28596

Compatible with the low expansion foam attachment ref. 24985

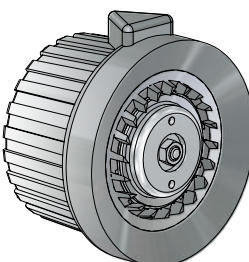
DEBOLITE



Inlet	Flow rate	Working pressure	Dimensions (mm)	Weight (kg)	Ref.
GFR female DN20	40-75-100-150 lpm	6 bar	306 x 95 x 224	1.5	18357
1" female NST-NH	10-20-25-40 GPM	100 PSI	260 x 95 x 224	1.4	18373
1" female BSP	20-50-100-150 lpm	6 bar	260 x 95 x 224	1.4	28597

Compatible with the low expansion ref. 09294 and medium expansion ref. 09712 foam attachments

TURBOLITE



Inlet	Flow rate	Working pressure	Dimensions (mm)	Weight (kg)	Ref.
GFR female DN20	40-75-100-150 lpm	6 bar	306 x 95 x 224	1.5	18350
1" female NST-NH	10-20-25-40 GPM	100 PSI	260 x 95 x 224	1.4	18371
1" female BSP	20-50-100-150 lpm	6 bar	260 x 95 x 224	1.4	28598

Compatible with the low expansion ref. 09294 and medium expansion ref. 09712 foam attachments



Our 150 lpm adjustable flow rate and spray pattern hand nozzles exist in 2 versions, "lite" and "kador". The calibrated flow rates are easily selectable by means of an indexed ring. The tactile marker indicates the highest flow rate.

The indexed head ring with tactile markings allows the adjustment of the different stream patterns (straight spray, attack spray and wide angle spray).

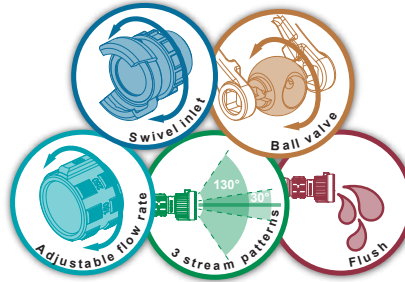
This range of nozzles is available with three different head types : Turbo (spinning teeth), Debi (cut teeth) and Magi (molded rubber teeth).

Maximum working pressure: PN16
Shutoff: ball valve
Opening: by operating handle
Flush position: yes
Material: aluminium alloy
Surface treatment: hard anodisation
Body type : profile
Pistol grip : single

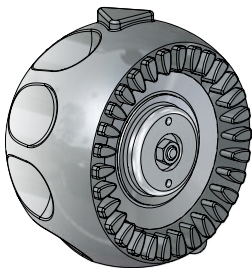
Options: low expansion foam attachment, medium expansion foam attachment.

Sheath colours:

**Compliant with the norm
EN 15182-2**



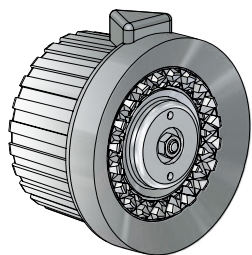
MAGIKADOR 150



Inlet	Flow rate	Working pressure	Dimensions (mm)	Weight (kg)	Ref.
GFR female DN20	40-75-100-150 lpm	6 bar	279 x 126 x 266	2.0	23160
1" female NST-NH	10-20-25-40 GPM	100 PSI	268 x 126 x 266	2.0	18400
GFR female DN20	20-50-100-150 lpm	6 bar	279 x 126 x 266	2.0	28599

Compatible with the low expansion foam attachment ref. 24985

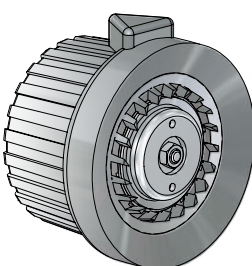
DEBIKADOR 150



Inlet	Flow rate	Working pressure	Dimensions (mm)	Weight (kg)	Ref.
GFR female DN20	40-75-100-150 lpm	6 bar	279 x 126 x 266	2.0	23181
1" female NST-NH	10-20-25-40 GPM	100 PSI	268 x 126 x 266	2.0	13718
GFR female DN20	20-50-100-150 lpm	6 bar	279 x 126 x 266	2.0	28600

Compatible with the low expansion ref. 09294 and medium expansion ref. 09712 foam attachments

TURBOKADOR 150



Inlet	Flow rate	Working pressure	Dimensions (mm)	Weight (kg)	Ref.
GFR female DN20	40-75-100-150 lpm	6 bar	279 x 126 x 266	2.0	28422
1" female NST-NH	10-20-25-40 GPM	100 PSI	268 x 126 x 266	2.0	02311
GFR female DN20	20-50-100-150 lpm	6 bar	279 x 126 x 266	2.0	28601

Compatible with the low expansion ref. 09294 and medium expansion ref. 09712 foam attachments

Adjustable flow rate and stream patterns hand nozzles



130 lpm adjustable flow rate and spray pattern hand nozzles compliant with DIN 14367.

The calibrated flow rates are easily selectable by means of an indexed ring. The tactile marker indicates the highest flow rate.

The indexed head ring with tactile markings allows the adjustment of the different stream patterns (straight spray, attack spray and wide angle spray).

This range of nozzles comes with two possibilities of head types : Turbo (spinning teeth) and Debi (cut teeth).

Maximum working pressure: PN16
Shutoff: ball valve
Opening: by operating handle
Flush position: yes
Material: aluminium alloy
Surface treatment: hard anodisation
Body type : profile
Pistol grip : single

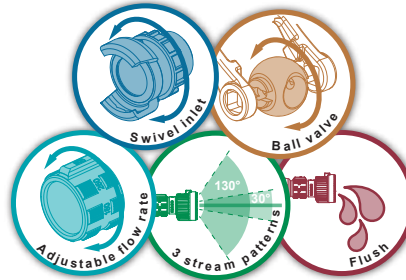
Options: low expansion foam attachment, medium expansion foam attachment.

Sheath colours:

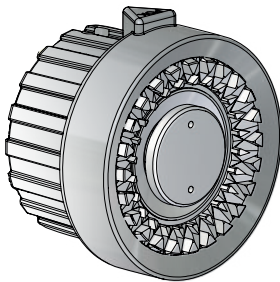
**Compliant with the norm
DIN 14 367**



TÜV certificate
Number PVR 1/02



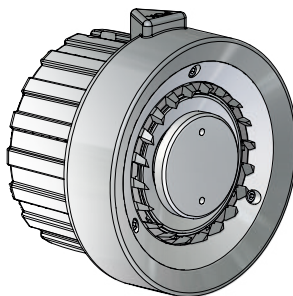
DEBIKADOR 130



Inlet	Flow rate	Working pressure	Dimensions (mm)	Weight (kg)	Ref.
Storz C/52	25-50-80-130 lpm	6 bar	318 x 126 x 267	2.4	16074.C52

Compatible with the low expansion ref. 09294 medium expansion ref. 09712 foam attachments.

TURBOKADOR 130



Inlet	Flow rate	Working pressure	Dimensions (mm)	Weight (kg)	Ref.
Storz C/52	25-50-80-130 lpm	6 bar	318 x 126 x 267	2.4	13181

Compatible with the low expansion ref. 09294 medium expansion ref. 09712 foam attachments.

LEGENDE hand nozzle





400 lpm adjustable flow rate and spray pattern hand nozzles compliant with DIN 14367. The calibrated flow rates are easily selectable by means of an indexed ring. The tactile marker indicates the highest flow rate. The indexed head ring with tactile markings allows the adjustment of the different stream patterns (straight spray, attack spray and wide angle spray). This range of nozzles is available with three different head types : Turbo (spinning teeth), Debi (cut teeth) and Magi (molded rubber teeth).

Maximum working pressure: PN16
Shutoff: ball valve
Opening: by operating handle
Flush position: yes
Material: aluminium alloy
Surface treatment: hard anodisation
Body type : profile
Pistol grip : single

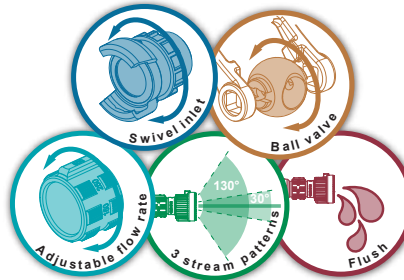
Options: low expansion foam attachment, medium expansion foam attachment.

Sheath colours:

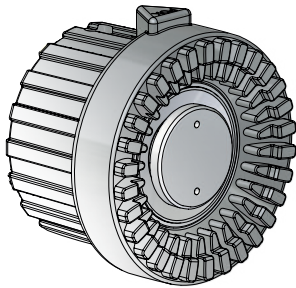
Compliant with the norm DIN 14 367



TÜV certificate
Number PVR 2/02



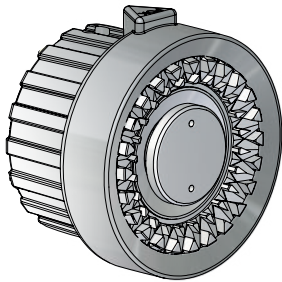
MAGIKADOR 400



Inlet	Flow rate	Working pressure	Dimensions (mm)	Weight (kg)	Ref.
Storz 38	60-130-250-400 lpm	6 bar	351 x 126 x 267	2.9	16048.38
1.5" female BSP	60-130-250-400 lpm	6 bar			16048.400

Compatible with the low expansion ref. 09297 and medium expansion ref. 09713 foam attachments

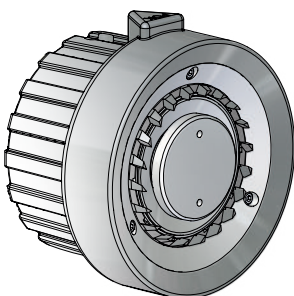
DEBIKADOR 400



Inlet	Flow rate	Working pressure	Dimensions (mm)	Weight (kg)	Ref.
Storz C/52	60-130-250-400 lpm	6 bar	351 x 126 x 267	2.9	13641

Compatible with the low expansion ref. 09297 medium expansion ref. 09713 foam attachments.

TURBOKADOR 400



Inlet	Flow rate	Working pressure	Dimensions (mm)	Weight (kg)	Ref.
Storz C/52	60-130-250-400 lpm	6 bar	351 x 126 x 267	2.9	13134

Compatible with the low expansion ref. 09297 medium expansion ref. 09713 foam attachments.

Adjustable flow rate and stream patterns hand nozzles



COOLER



Maximum working pressure: PN16
Shutoff: ball valve
Opening: by operating handle
Flush position: yes
Material: aluminium alloy
Surface treatment: hard anodisation
Body type : profile
Head diffuser: spinning teeth
Pistol grip : single

Options: low expansion foam attachment, medium expansion foam attachment.

Sheath colours: ●

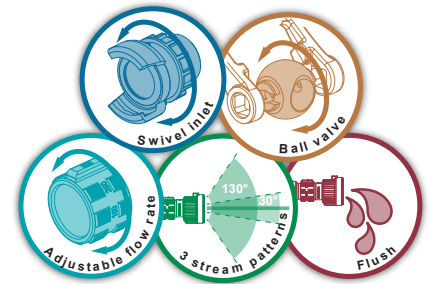


CNBOP-PIB certificate Number 3121/2018

The Cooler hand nozzle stands out thanks to a high-quality black surface treatment. Its 200 lpm maximum flow rate meets the requirements of the Polish norm.

Inlet	Flow rate	Working pressure	Dimensions (mm)	Weight (kg)	Ref.
Storz C/52	45-85-130-200 lpm	6 bar	322 x 98 x 232	1.8	40486

Compatible with the low expansion ref. 09294 and medium expansion ref. 09712 foam attachments.



Mamba monitor





The 500 lpm adjustable flow rate and stream patterns hand nozzles are available in two versions. The "ECO" version uses a molded aluminium alloy body. The calibrated flow rates are easily selectable by means of an indexed ring. The tactile marker indicates the highest flow rate. The indexed head ring with tactile markings allows the adjustment of the different stream patterns (straight spray, attack spray and wide angle spray). This range of nozzles is available with three different head types : Turbo (spinning teeth), Debi (cut teeth) and Magi (molded rubber teeth). These nozzles are used by a large number of firefighters all around the world.

Maximum working pressure: PN16
Shutoff: ball valve
Opening: by operating handle
Flush position: yes
Material: aluminium alloy
Surface treatment: hard anodisation
Body type: molded
Pistol grip : single

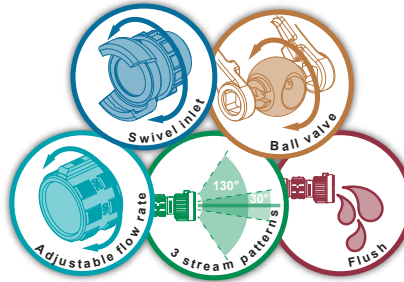
Options: low expansion foam attachment, medium expansion foam attachment.

Sheath colours:

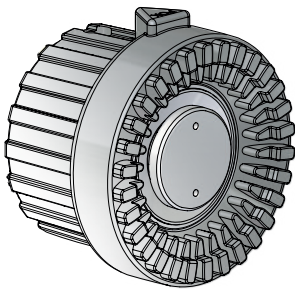
**Compliant with the norm
EN 15182-2**



Poland Certificate Czech Republic Certificate China Certificate



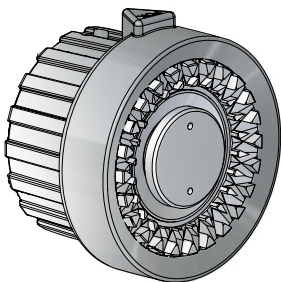
MAGIKADOR 500 - ECO



Inlet	Flow rate	Working pressure	Dimensions (mm)	Weight (kg)	Ref.
DSP DN40	60-130-235 lpm	6 bar	312 x 126 x 255	2.5	28622
DSP DN40	60-120-180-240 lpm	6 bar	312 x 126 x 255	2.5	28640
DSP DN40	150-250 lpm	6 bar	312 x 126 x 255	2.5	28612
DSP DN40	150-250-500 lpm	6 bar	312 x 126 x 255	2.5	24981.DSP40
DSP DN40	150-500 lpm	6 bar	312 x 126 x 255	2.5	28616
DSP DN40	200-350-500 lpm	6 bar	312 x 126 x 255	2.5	28634
DSP DN40	150-250-350-500 lpm	6 bar	312 x 126 x 255	2.5	28646
1.5" female NST-NH	30-60-95 GPM	100 PSI	290 x 126 x 255	2.4	28651
1.5" female NST-NH	60-95-125 GPM	100 PSI	290 x 126 x 255	2.4	28654
1.5" female NST-NH	30-60-95-125 GPM	100 PSI	290 x 126 x 255	2.4	28657
1.5" female NST-NH	40-60-95-125 GPM	100 PSI	290 x 126 x 255	2.4	28660

Compatible with the low expansion ref. 09297 and medium expansion ref. 09713 foam attachments

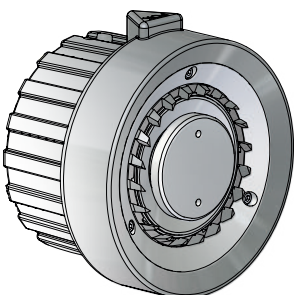
DEBIKADOR 500 - ECO



Inlet	Flow rate	Working pressure	Dimensions (mm)	Weight (kg)	Ref.
DSP DN40	150-250-500 lpm	6 bar	312 x 126 x 255	2.5	22901
DSP DN40	150-500 lpm	6 bar	312 x 126 x 255	2.5	28618
DSP DN40	150-250-350-500 lpm	6 bar	312 x 126 x 255	2.5	28648
1.5" female NST-NH	30-60-95 GPM	100 PSI	290 x 126 x 255	2.5	28652
1.5" female NST-NH	60-95-125 GPM	100 PSI	290 x 126 x 255	2.5	28655
1.5" female NST-NH	30-60-95-125 GPM	100 PSI	290 x 126 x 255	2.4	28658
1.5" female NST-NH	40-60-95-125 GPM	100 PSI	290 x 126 x 255	2.4	28661

Compatible with the low expansion ref. 09297 and medium expansion ref. 09713 foam attachments

TURBOKADOR 500 - ECO



Inlet	Flow rate	Working pressure	Dimensions (mm)	Weight (kg)	Ref.
DSP DN40	60-120-180-240 lpm	6 bar	312 x 126 x 255	2.5	28644
DSP DN40	150-250-500 lpm	6 bar	312 x 126 x 255	2.5	28632
DSP DN40	150-250-350-500 lpm	6 bar	312 x 126 x 255	2.5	28650
1.5" female NST-NH	30-60-95 GPM	100 PSI	290 x 126 x 255	2.4	28653
1.5" female NST-NH	60-95-125 GPM	100 PSI	290 x 126 x 255	2.4	28656
1.5" female NST-NH	30-60-95-125 GPM	100 PSI	290 x 126 x 255	2.4	28659
1.5" female NST-NH	40-60-95-125 GPM	100 PSI	290 x 126 x 255	2.4	28662

Compatible with the low expansion ref. 09297 and medium expansion ref. 09713 foam attachments

Adjustable flow rate and stream patterns hand nozzles



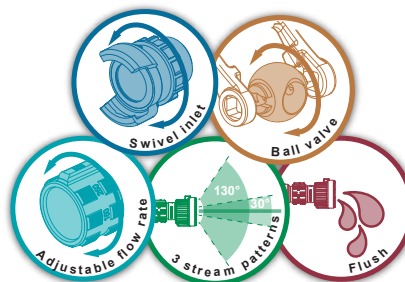
The 500 lpm adjustable flow rate and stream patterns hand nozzles are available in two versions. "ECO" and "Premium". The calibrated flow rates are easily selectable by means of an indexed ring. The tactile marker indicates the highest flow rate. The indexed head ring with tactile markings allows the adjustment of the different stream patterns (straight spray, attack spray and wide angle spray). This range of nozzles is available with three different head types : Turbo (spinning teeth), Debi (cut teeth) and Magi (molded rubber teeth). These nozzles are used by a large number of firefighters all around the world.

Maximum working pressure: PN16
Shutoff: ball valve
Opening: by operating handle
Flush position: yes
Material: aluminium alloy
Surface treatment: hard anodisation
Body type : profile
Pistol grip : single

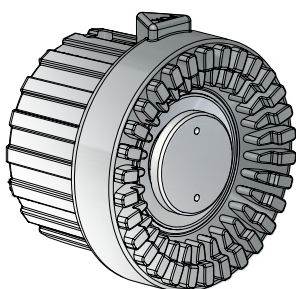
Options: low expansion foam attachment, medium expansion foam attachment.

Sheath colours:

**Compliant with the norm
EN 15182-2**



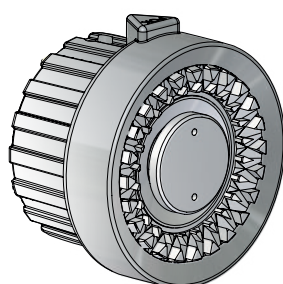
MAGIKADOR 500



Inlet	Flow rate	Working pressure	Dimensions (mm)	Weight (kg)	Ref.
1.5" female NST-NH	30-60-95 GPM	100 PSI	290 x 126 x 266	2.4	18458
1.5" female NST-NH	30-60-95-125 GPM	100 PSI	290 x 126 x 266	2.4	18459
1.5" female NST-NH	40-60-95-125 GPM	100 PSI	290 x 126 x 266	2.4	18486
1.5" female NST-NH	60-95-125 GPM	100 PSI	290 x 126 x 266	2.4	18487
DSP DN40	150-250-500 lpm	6 bar	312 x 126 x 266	2.5	22969
DSP DN40	150-250 lpm	6 bar	312 x 126 x 266	2.5	28611.DSP40
DSP DN40	60-130-235 lpm	6 bar	312 x 126 x 266	2.5	28621
DSP DN40	200-350-500 lpm	6 bar	312 x 126 x 266	2.5	28633
DSP DN40	150-250-350-500 lpm	6 bar	312 x 126 x 266	2.5	28645

Compatible with the low expansion ref. 09297 and medium expansion ref. 09713 foam attachments

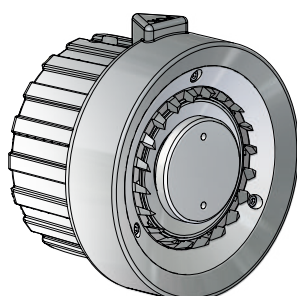
DEBIKADOR 500



Inlet	Flow rate	Working pressure	Dimensions (mm)	Weight (kg)	Ref.
1.5" female NST-NH	30-60-95 GPM	100 PSI	290 x 126 x 266	2.4	13720
1.5" female NST-NH	60-95-125 GPM	100 PSI	290 x 126 x 266	2.4	13721
1.5" female NST-NH	30-60-95-125 GPM	100 PSI	290 x 126 x 266	2.4	13722
1.5" female NST-NH	40-60-95-125 GPM	100 PSI	290 x 126 x 266	2.4	18485
DSP DN40	150-250 lpm	6 bar	312 x 126 x 266	2.5	18992
DSP DN40	150-250-500 lpm	6 bar	312 x 126 x 266	2.5	22466.DSP40
DSP DN40	60-130-235 lpm	6 bar	312 x 126 x 266	2.5	28623
DSP DN40	200-350-500 lpm	6 bar	312 x 126 x 266	2.5	28635
DSP DN40	150-250-350-500 lpm	6 bar	312 x 126 x 266	2.5	28647

Compatible with the low expansion ref. 09297 and medium expansion ref. 09713 foam attachments

TURBOKADOR 500



Inlet	Flow rate	Working pressure	Dimensions (mm)	Weight (kg)	Ref.
1.5" female NST-NH	40-60-95-125 GPM	100 PSI	290 x 126 x 266	2.4	08349
1.5" female NST-NH	30-60-95-125 GPM	100 PSI	290 x 126 x 266	2.4	08370
1.5" female NST-NH	30-60-95 GPM	100 PSI	290 x 126 x 266	2.4	09891
1.5" female NST-NH	60-95-125 GPM	100 PSI	290 x 126 x 266	2.4	09892
DSP DN40	100-200-300 lpm	6 bar	312 x 126 x 266	2.5	16219
DSP DN40	150-250 lpm	6 bar	312 x 126 x 266	2.5	16640
DSP DN40	150-250-500 lpm	6 bar	312 x 126 x 266	2.5	25217
DSP DN40	150-500 lpm	6 bar	312 x 126 x 266	2.5	28619
DSP DN40	200-350-500 lpm	6 bar	312 x 126 x 266	2.5	28637
DSP DN40	60-120-180-240 lpm	6 bar	312 x 126 x 266	2.5	28643
DSP DN40	150-250-350-500 lpm	6 bar	312 x 126 x 266	2.5	28649

Compatible with the low expansion ref. 09297 and medium expansion ref. 09713 foam attachments

TURBOKADOR 500 - Stainless steel spinning teeth



The Turbokador 500 nozzle has been the reference in hand nozzles for decades. It combines performance and light weight. Equipped with stainless steel spinning teeth, it is a formidable weapon to fight fires. Its spinning teeth offer resistance and durability while producing fine droplets.

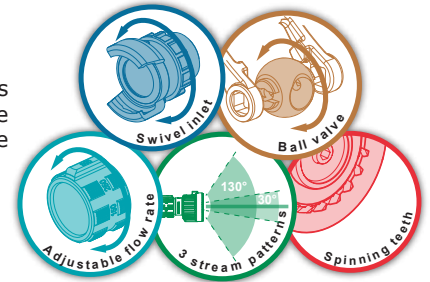
Inlet	Flow rate	Working pressure	Dimensions (mm)	Weight (kg)	Ref.
DSP DN40	150-250-500 lpm	6 bar	307 x 126 x 266	2.6	42831

Compatible with the low expansion ref. 09297 medium expansion ref. 09713 foam attachments.

Maximum working pressure: PN16
Shutoff: ball valve
Opening: by operating handle
Flush position: yes
Material: aluminium alloy
Surface treatment: hard anodisation
Body type : profile
Head diffuser: spinning teeth
Pistol grip : single

Options: low expansion foam attachment, medium expansion foam attachment.

Sheath colours:



TURBOKADOR 500 - Electrical fires (High Voltage Diffuser)



The Turbokador 500 nozzle with all its known and recognized qualities is equipped in this version with a diffuser designed for electrical fires. It allows an efficient and safe use to fight electrical fires.

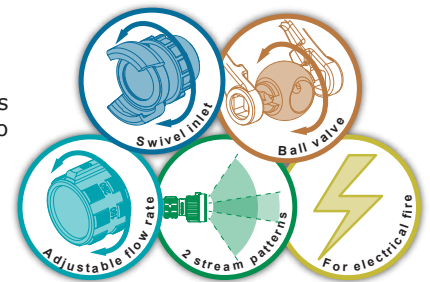
Inlet	Flow rate	Working pressure	Dimensions (mm)	Weight (kg)	Ref.
DSP DN40	150-250-500 lpm	6 bar	312 x 126 x 266	2.6	41105

Compatible with the low expansion ref. 09297 medium expansion ref. 09713 foam attachments.

Maximum working pressure: PN16
Shutoff: ball valve
Opening: by operating handle
Material: aluminium alloy
Surface treatment: hard anodisation
Body type : profile
Head diffuser: spinning teeth
Pistol grip : single

Options: low expansion foam attachment, medium expansion foam attachment.

Sheath colours:



MAGIKADOR hand nozzle



Adjustable flow rate and stream patterns hand nozzles



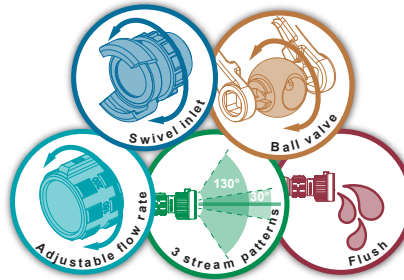
The 750 lpm adjustable flow rate and stream patterns hand nozzles represent the ideal compromise between the 500 lpm and 1000 lpm versions. They offer power, lightness, and manoeuvrability. The nozzles are available in two versions: "ECO" and "Premium". The calibrated flow rates are easily selectable by means of an indexed ring. The tactile marker indicates the highest flow rate. The head ring with tactile markings allows different spray pattern selection (straight spray, flash over and wide angle spray). This range of nozzles is available with three different head types: Debi (cut teeth), Magi (molded rubber teeth) and Turbo (spinning teeth).

Maximum working pressure: PN16
Shutoff: ball valve
Opening: by operating handle
Flush position: yes
Material: aluminium alloy
Surface treatment: hard anodisation
Body type: molded
Pistol grip : single

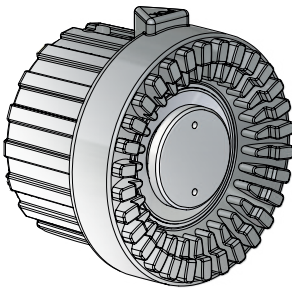
Options: low expansion foam attachment, medium expansion foam attachment.

Sheath colours:

**Compliant with the norm
EN 15182-2**



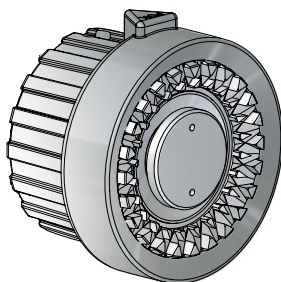
MAGIKADOR 750 - ECO



Inlet	Flow rate	Working pressure	Dimensions (mm)	Weight (kg)	Ref.
DSP DN65	250-500-750 lpm	6 bar	422 x 126 x 260	4.1	44271
DSP DN65	350-500-600-750 lpm	6 bar			44272
2.5" female NST-NH	125-180 GPM	100 PSI	422 x 126 x 260	4.1	44273
2.5" female NST-NH	95-125-150-200 GPM	100 PSI			44274

Compatible with the low expansion ref. 27487 and medium expansion ref. 44308 foam attachments

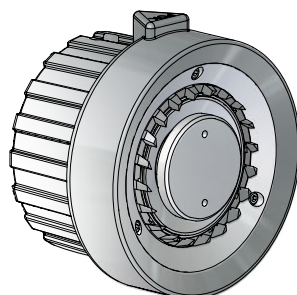
DEBIKADOR 750 - ECO



Inlet	Flow rate	Working pressure	Dimensions (mm)	Weight (kg)	Ref.
DSP DN65	250-500-750 lpm	6 bar	416 x 126 x 260	4.1	44275
DSP DN65	350-500-600-750 lpm	6 bar			44276
2.5" female NST-NH	125-180 GPM	100 PSI	416 x 126 x 260	4.1	44277
2.5" female NST-NH	95-125-150-200 GPM	100 PSI			44278

Compatible with the low expansion ref. 27487 and medium expansion ref. 44308 foam attachments

Turbokador 750 - ECO



Inlet	Flow rate	Working pressure	Dimensions (mm)	Weight (kg)	Ref.
DSP DN65	350-500-600-750 lpm	6 bar	417 x 126 x 260	4.1	44348
DSP DN65	250-500-750 lpm	6 bar	417 x 126 x 260	4.1	44347
2.5" female NST-NH	125-180 GPM	100 PSI	417 x 126 x 260	4.1	44349
2.5" female NST-NH	95-125-150-200 GPM	100 PSI			44350

Compatible with the low expansion ref. 27487 and medium expansion ref. 44308 foam attachments



The 750 lpm adjustable flow rate and stream patterns hand nozzles represent the ideal compromise between the 500 lpm and 1000 lpm versions. They offer power, lightness and manoeuvrability.

The nozzles are available in two versions: "ECO" and "Premium".

The calibrated flow rates are easily selectable by means of an indexed ring. The tactile marker indicates the highest flow rate.

The head ring with tactile markings allows different spray pattern selection (straight spray, flash over and wide angle spray).

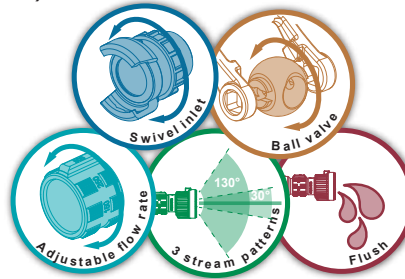
This range of nozzles comes with three different head types: Debi (cut teeth), Magi (rubber moulded teeth) and Turbo (spinning teeth).

Maximum working pressure: PN16
Shutoff: ball valve
Opening: by operating handle
Flush position: yes
Material: aluminium alloy
Surface treatment: hard anodisation
Body type : profile
Pistol grip : single

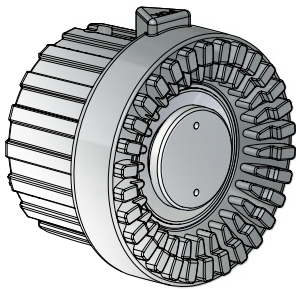
Options: low expansion foam attachment, medium expansion foam attachment.

Sheath colours:

**Compliant with the norm
EN 15182-2**



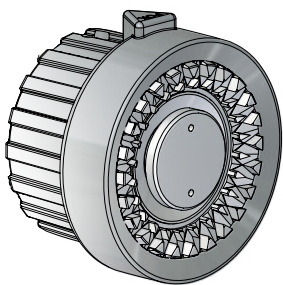
MAGIKADOR 750



Inlet	Flow rate	Working pressure	Dimensions (mm)	Weight (kg)	Ref.
DSP DN40	265-380-500-600 lpm	7 bar	327 x 126 x 272	3.4	39264
DSP DN65	350-500-600-750 lpm	6 bar	402 x 126 x 272	4.1	37148
2.5" female NST-NH	95-125-150-200 GPM	100 PSI			44279
DSP DN65	250-500-750 lpm	6 bar			44280
2.5" female NST-NH	125-180 GPM	100 PSI			44281

Compatible with the low expansion ref. 27487 and medium expansion ref. 44308 foam attachments

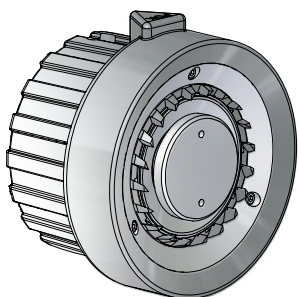
DEBIKADOR 750



Inlet	Flow rate	Working pressure	Dimensions (mm)	Weight (kg)	Ref.
DSP DN65	350-500-600-750 lpm	6 bar	397 x 127 x 272	4.1	37142
2.5" female NST-NH	95-125-150-200 GPM	100 PSI			44282
2.5" female NST-NH	125-180 GPM	100 PSI			44283

Compatible with the low expansion ref. 27487 and medium expansion ref. 44308 foam attachments

TURBOKADOR 750



Inlet	Flow rate	Working pressure	Dimensions (mm)	Weight (kg)	Ref.
DSP DN40	350-500-600-750 lpm	6 bar			44284
DSP DN65	350-500-600-750 lpm	6 bar	397 x 127 x 272	4.1	37154
Storz C/52	350-500-600-750 lpm	6 bar			44285
2.5" male Instantaneous	350-500-600-750 lpm	6 bar			44286

Compatible with the low expansion ref. 27487 and medium expansion ref. 44308 foam attachments

Adjustable flow rate and stream patterns hand nozzles



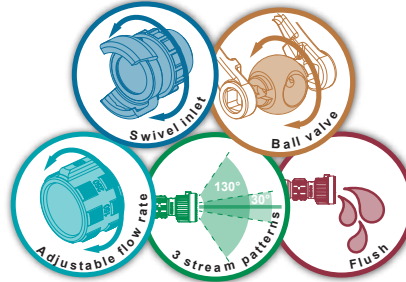
The 1000 lpm adjustable flow rate and spray patterns hand nozzles, offering the highest flow rate, precision, and durability, have proved themselves throughout the world. The nozzles are available in two versions: "ECO" and "Premium". The calibrated flow rates are easily selectable by means of an indexed ring. The tactile marker indicates the highest flow rate. The indexed head ring with tactile markings allows the adjustment of the different stream patterns (straight spray, attack spray and wide angle spray). This range of nozzles is available with three different head types : Debi (cuth teeth), Magi (molded rubber teeth) and Turbo (spinning teeth).

Maximum working pressure: PN16
Shutoff: ball valve
Opening: by operating handle
Flush position: yes
Material: aluminium alloy
Surface treatment: hard anodisation
Body type: molded
Pistol grip : single

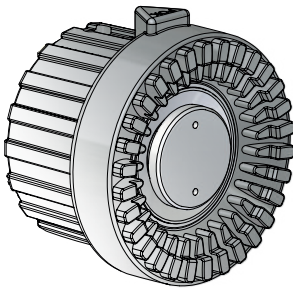
Options: low expansion foam attachment, medium expansion foam attachment.

Sheath colours:

**Compliant with the norm
EN 15182-2**



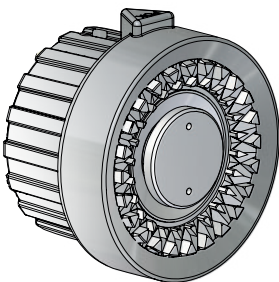
MAGIKADOR 1000 - ECO



Inlet	Flow rate	Working pressure	Dimensions (mm)	Weight (kg)	Ref.
DSP DN65	300-500-750-1000 lpm	6 bar	422 x 126 x 260	4.1	44287
2.5" female NST-NH	95-125-150-250 GPM	100 PSI			44288
2.5" female NST-NH	100-150-200-250 GPM	100 PSI			44289
2.5" female NST-NH	125-150-200-250 GPM	100 PSI			44290
2.5" female NST-NH	200-250-300-350 GPM	100 PSI	450 x 126 x 260	4.8	28686

Compatible with the low expansion ref. 27487 and medium expansion ref. 44308 foam attachments

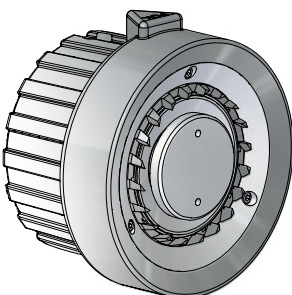
DEBIKADOR 1000 - ECO



Inlet	Flow rate	Working pressure	Dimensions (mm)	Weight (kg)	Ref.
DSP DN65	300-500-750-1000 lpm	6 bar	416 x 126 x 260	4.1	44291
2.5" female NST-NH	95-125-150-250 GPM	100 PSI			44292
2.5" female NST-NH	100-150-200-250 GPM	100 PSI			44293
2.5" female NST-NH	125-150-200-250 GPM	100 PSI			44294
2.5" female NST-NH	200-250-300-350 GPM	100 PSI	450 x 126 x 260	4.8	28687

Compatible with the low expansion ref. 27487 and medium expansion ref. 44308 foam attachments

Turbokador 1000 - ECO



Inlet	Flow rate	Working pressure	Dimensions (mm)	Weight (kg)	Ref.
DSP DN65	300 - 500 - 750 - 1000 lpm	6 bar	417 x 126 x 262	4.1	44351
2.5" female NST-NH	95-125-150-250 GPM	100 PSI			44352
2.5" female NST-NH	100-150-200-250 GPM	100 PSI			44353
2.5" female NST-NH	125-150-200-250 GPM	100 PSI			44354

Compatible with the low expansion ref. 27487 and medium expansion ref. 44308 foam attachments

New design
LIGHTER
more **EFFICIENT**



The 1000 lpm adjustable flow rate and stream patterns hand nozzles offer the highest flow rate for hand nozzles. This "new generation" is lighter, shorter, and has greater range.

The nozzles are available in two versions: "1" or "2" pistol grips.

The different flow rates and flush position are obtained by rotating the calibrated ring. The head ring with tactile markings allows different spray pattern selection (straight spray, flash over and wide angle spray).

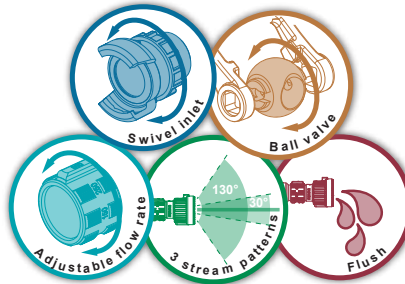
This range of nozzles is available with three different head types : Debi (cut teeth), Magi (rubber molded teeth) and Turbo (spinning teeth).

Maximum working pressure: PN16
Shutoff: ball valve
Opening: by operating handle
Flush position: yes
Material: aluminium alloy
Surface treatment: hard anodisation
Body type : profile
Pistol grip : single

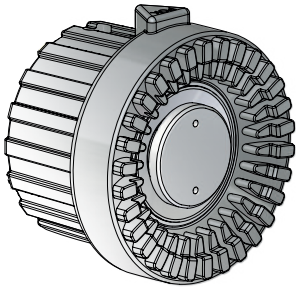
Options: low expansion foam attachment, medium expansion foam attachment.

Sheath colours:

**Compliant with the norm
EN 15182-2**



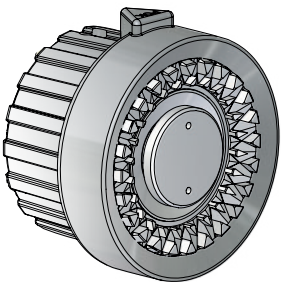
MAGIKADOR 1000 - Single pistol grip



Inlet	Flow rate	Working pressure	Dimensions (mm)	Weight (kg)	Ref.
DSP DN65	300 - 500 - 750 - 1000 lpm	6 bar	401 x 127 x 272	4.1	35591
Storz B/75	300 - 500 - 750 - 1000 lpm	6 bar	365 x 127 x 272	4.8	35591.B75

Compatible with the low expansion ref. 27487 and medium expansion ref. 44308 foam attachments

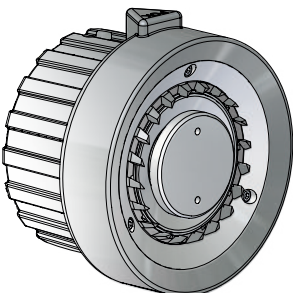
DEBIKADOR 1000 - Single pistol grip



Inlet	Flow rate	Working pressure	Dimensions (mm)	Weight (kg)	Ref.
2.5" male BSP	285 - 500 - 600 - 800 - 950 lpm	6 bar	321 x 127 x 272	3.5	37979
DSP DN65	300 - 500 - 750 - 1000 lpm	6 bar	401 x 127 x 272	4.1	35594
Storz B/75	300 - 500 - 750 - 1000 lpm	6 bar	365 x 127 x 272	4.8	35594.B75

Compatible with the low expansion ref. 27487 and medium expansion ref. 44308 foam attachments

Turbokador 1000 - Single pistol grip



Inlet	Flow rate	Working pressure	Dimensions (mm)	Weight (kg)	Ref.
DSP DN65	300 - 500 - 750 - 1000 lpm	6 bar	401 x 127 x 272	4.1	35597
Storz B/75	300 - 500 - 750 - 1000 lpm	6 bar	365 x 127 x 272	4.8	35597.B75

Compatible with the low expansion ref. 27487 and medium expansion ref. 44308 foam attachments

Adjustable flow rate and stream patterns hand nozzles



The 1000 lpm adjustable flow rate and spray patterns hand nozzles offer the highest flow rate, precision and durability, that has been proved itself throughout the world. The nozzles are available in two versions: "ECO" and "Premium".

The calibrated flow rates are easily selectable by means of an indexed ring. The tactile marker indicates the highest flow rate.

The indexed head ring with tactile markings allows the adjustment of the different stream patterns (straight spray, attack spray and wide angle spray).

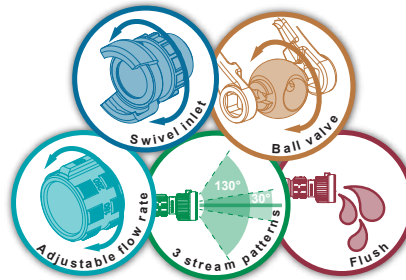
This range of nozzles is available with three different head types : Debi (cut teeth), Magi (rubber molded teeth) and Turbo (spinning teeth).

Maximum working pressure: PN16
Shutoff: ball valve
Opening: by operating handle
Flush position: yes
Material: aluminium alloy
Surface treatment: hard anodisation
Body type : profile
Pistol grip : double

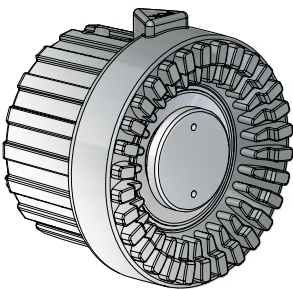
Options: low expansion foam attachment, medium expansion foam attachment.

Sheath colours:

Compliant with the norm EN 15182-2



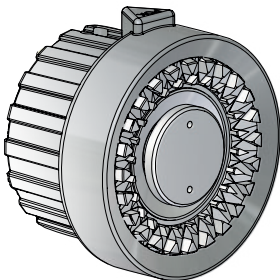
MAGIKADOR 1000



Inlet	Flow rate	Working pressure	Dimensions (mm)	Weight (kg)	Ref.
2.5" female NST-NH	100-150-200-250 GPM	100 PSI			44296
DSP DN65	300 - 500 - 750 - 1000 lpm	6 bar	417 x 338 x 160	4.5	35582
Storz B/75	300 - 500 - 750 - 1000 lpm	6 bar	381 x 338 x 166	5.2	35582.B75
2.5" female NST-NH	95-125-150-250 GPM	100 PSI			44295
2.5" female NST-NH	125-150-200-250 GPM	100 PSI			44297

Compatible with the low expansion ref. 27487 and medium expansion ref. 44308 foam attachments

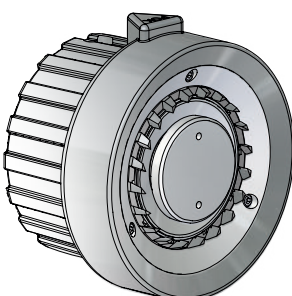
DEBIKADOR 1000



Inlet	Flow rate	Working pressure	Dimensions (mm)	Weight (kg)	Ref.
DSP DN65	300 - 500 - 750 - 1000 lpm	6 bar	417 x 338 x 160	4.5	35585
Storz B/75	300 - 500 - 750 - 1000 lpm	6 bar	381 x 338 x 166	5.2	35585.B75
2.5" female NST-NH	95-125-150-250 GPM	100 PSI			44298
2.5" female NST-NH	100-150-200-250 GPM	100 PSI			44299
2.5" female NST-NH	125-150-200-250 GPM	100 PSI			44300

Compatible with the low expansion ref. 27487 and medium expansion ref. 44308 foam attachments

TURBOKADOR 1000



Inlet	Flow rate	Working pressure	Dimensions (mm)	Weight (kg)	Ref.
DSP DN65	300 - 500 - 750 - 1000 lpm	6 bar	417 x 338 x 160	4.5	35588
Storz B/75	300 - 500 - 750 - 1000 lpm	6 bar	381 x 338 x 166	5.2	35588.B75
2.5" male Instantaneous	300-500-750-1000 lpm	6 bar			44301
2.5" male BSP	300-500-750-1000 lpm	6 bar			44302

Compatible with the low expansion ref. 27487 and medium expansion ref. 44308 foam attachments

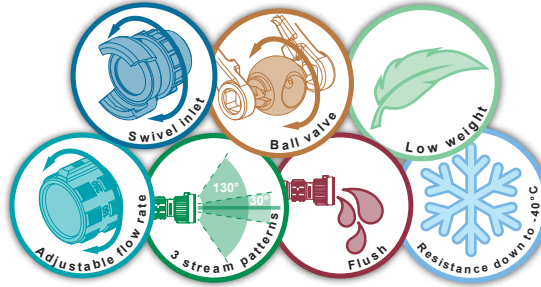
Conception
 Conform to norm
FM 5511
 Certification in process



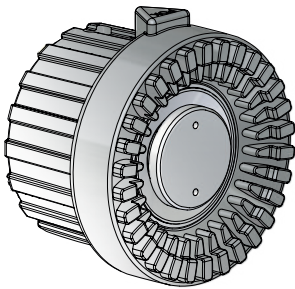
Our range of adjustable flow rate and stream pattern "Karacho" hand nozzles were designed to comply with the FM5511 standard. These nozzles have a flow rate ranging from 30 to 125GPM. The calibrated flow rates are easily selected by means of an indexed ring. A tactile marker indicates the maximum flow rate. The indexed head ring with tactile markings allows the adjustment the different stream patterns (straight spray, attack spray, and wide angle spray). This range of nozzles offers three types of different diffusion heads: "Turbo" (spinning teeth), "Débi" (cut teeth), and "Magi" (molded teeth).

Pressure rating: 100 PSI
Valve type: ball valve
Opening: by handle
Flush position: yes
Material: aluminium alloy
Surface treatment: hard anodised
Body type: profiled
Pistol grip: simple
Freeze resistance: down to -40°C

**Compliant with the norm
 FM 5511
 certification in process**

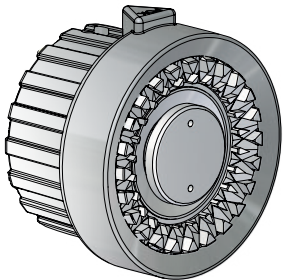


MAGIKARACHO



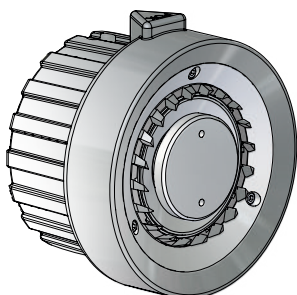
Inlet	Flow rate	Working pressure	Dimensions (mm)	Weight (kg)	Ref.
2,5" male BS 336	30 - 60 - 95 - 125 GPM	100 PSI	339 x 118 x 245	2	45014
1,5" female NST-NH	30 - 60 - 95 - 125 GPM	100 PSI	293 x 118 x 245	2	45023

DEBIKARACHO



Inlet	Flow rate	Working pressure	Dimensions (mm)	Weight (kg)	Ref.
2,5" male BS 336	30 - 60 - 95 - 125 GPM	100 PSI	335 x 118 x 245	2,1	45017
1,5" female NST-NH	30 - 60 - 95 - 125 GPM	100 PSI	288 x 118 x 245	2	45026

TURBOKARACHO



Inlet	Flow rate	Working pressure	Dimensions (mm)	Weight (kg)	Ref.
2,5" male BS 336	30 - 60 - 95 - 125 GPM	100 PSI	333 x 118 x 245	2	45020
1,5" female NST-NH	30 - 60 - 95 - 125 GPM	100 PSI	288 x 118 x 245	2	45029

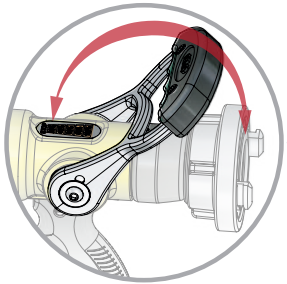
Adjustable flow rate and stream patterns hand
nozzles



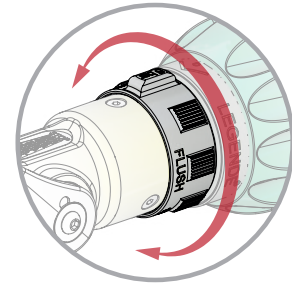
Hand nozzle



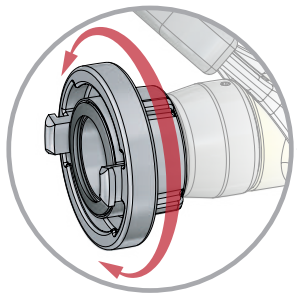
Shutoff handle with polyurethane cover. Shutoff with slide valve, opening indexed at 20%, 40%, 60%, and 80% of the flow rate, and 100% when pushed fully to the stop.



Selection ring (on the 600 and 1000 lpm versions) to go from the normal mode to a "FLUSH" position ("PURGE") at the operating pressure of 6 bar.

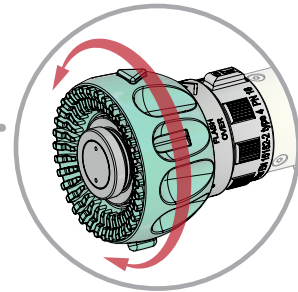


Swivelling inlet coupling compliant with international norms



Polyurethane anti-shock head sheath with tactile markings indicating the different stream patterns. Stream pattern selection on 3 positions:

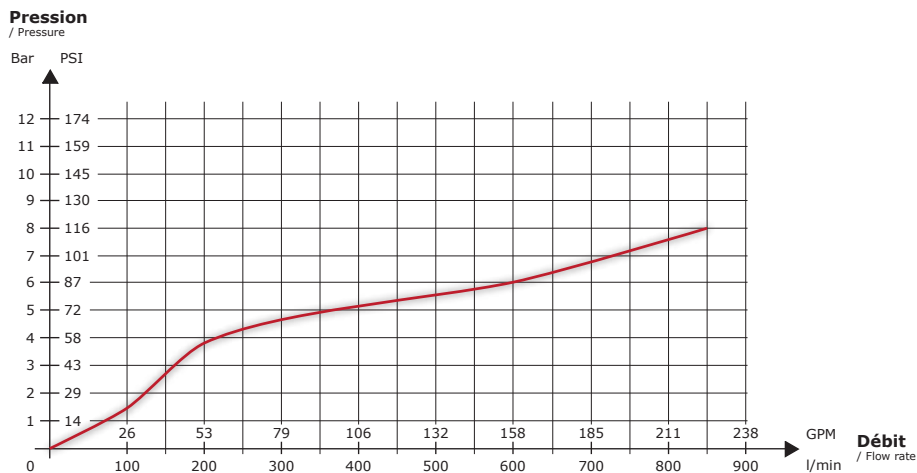
- straight spray,
- attack spray (30°)
- full fog diffusion (130°)



TECHNICAL CHARACTERISTICS

- **The flow rate is adjusted** by operating the shutoff handle from the closed to the fully open position, passing through four intermediate steps corresponding to 20% of the maximum flow rate for the first setting, 40% of the maximum flow rate for the second, 60% of the maximum flow rate for the third and 80% of maximum flow rate for the fourth.
- **A selection ring** (available only on models 600 and 1000) allows the user to go from the **6 bar** (normal use) position to the position marked **PURGE or FLUSH** allowing for the removal of particles which may hamper the proper hydraulic operation of the nozzle.
- **Adjustable stream pattern** : A continuous rotation of the head ring allows the user to progress from a **straight stream** to a **32° attack spray**, called "Flash Over", to a **130° full fog diffusion cone** forming a wall of water (followed by a flush position only on the 500 model). The Tactile and visual indicators allow the user to know the type of spray in total darkness even while wearing firefighting gloves in **compliance with the EN 659 norm**.
- **Swivelling inlet coupling**.
- Maximum working pressure **PN16**.
- **Adjustable flow rate shutoff** thanks to the solidly constructed handle with stainless steel piston and hardware.

FLOW RATE/PRESSURE GRAPH - For the 600 lpm version



CONSTRUCTION

- Construction in **aluminium alloy**, new primary alloy, extremely light.
- Resistant to mechanical shocks and chemical attacks thanks to **50µ hard anodisation**.
- Head shock protection by means of a **polyurethane head sheath**. This elastomer does not melt when heated, and is an excellent insulator, which allows the user to work under high heat conditions without getting burnt, and does not stick to fingers in low temperatures.
- Very ergonomic, anti-slip (polyurethane) pistol grip.
- Stainless steel axles and screws.

Autoregulated pressure hand nozzles with slide valve



LEGENDE



Compliant with the norm
EN 15182-2

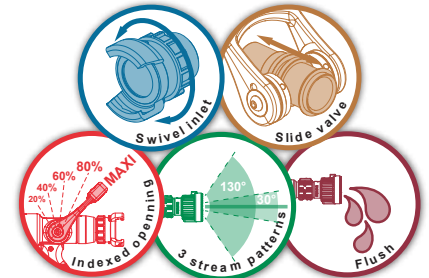
Maximum working pressure: PN16
Shutoff: with slide valve
Opening: by operating handle
Flush position: yes
Material: aluminium alloy
Surface treatment: polyester coating
Body type: molded
Diffusion head: cut teeth
Pistol grip : single

Options: low and medium expansion foam attachments.
Sheath colours: ●

The whole range of ultra compact autoregulated pressure "Legende" nozzles offer an adjustable flow rate using an indexed shutoff handle. The head ring with cut teeth allows different stream patterns selection (straight spray, attack spray and wide angle spray).

Inlet	Flow rate	Working pressure	Dimensions (mm)	Weight (kg)	Ref.
DSP DN40	400 lpm	6 bar			44306
2" male BSP	400 lpm	6 bar	263 x 127 x 257	2.4	40543
1.5" female BSP	500 lpm	6 bar	260 x 127 x 257	2.3	37236
Storz C/52	500 lpm	6 bar	298 x 127 x 257	2.6	37236.Storz

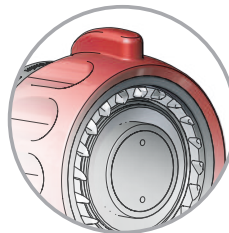
Compatible with the low expansion ref. 40508 medium expansion ref. 42101 foam attachments.



LEGENDE with stainless steel spinning teeth



Compliant with the norm
EN 15182-2



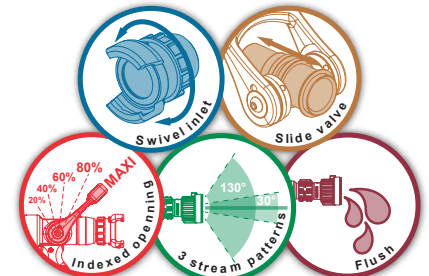
Spinning teeth

Maximum working pressure: PN16
Shutoff: with slide valve
Opening: by operating handle
Flush position: yes
Material: aluminium alloy
Surface treatment: polyester coating
Body type: molded
Head diffuser: spinning teeth
Pistol grip : single
Options: low and medium expansion foam attachments.
Sheath colours: ●

The Legende nozzle with all its known and recognized qualities is equipped in this version with stainless steel spinning teeth.

Inlet	Flow rate	Working pressure	Dimensions (mm)	Weight (kg)	Ref.
1.5" female BSP	500 lpm	6 bar	305 x 127 x 257	2.5	41733

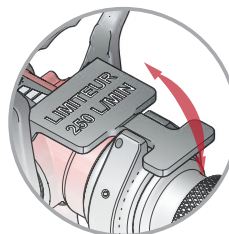
Compatible with the low expansion ref. 40508 medium expansion ref. 42101 foam attachments.



LEGENDE with flow rate limiter



Compliant with the norm
EN 15182-2



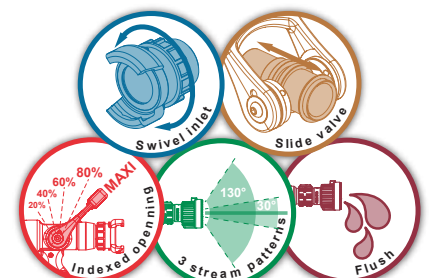
The trigger allows to limit the flow rate to 250 lpm @ 6 bar

Maximum working pressure: PN16
Shutoff: with slide valve
Opening: by operating handle
Flush position: yes
Material: aluminium alloy
Surface treatment: polyester coating
Body type: molded
Diffusion head: cut teeth
Pistol grip : single
Options: low and medium expansion foam attachments.
Sheath colours: ●

In this configuration the Legende nozzle adds to all its perks a retractable flow rate limiter to lock the flow rate to 250 lpm. This is especially suitable for fires on ships.

Inlet	Flow rate	Working pressure	Dimensions (mm)	Weight (kg)	Ref.
1.5" female BSP	500 lpm	6 bar	260 x 127 x 257	2.7	40659

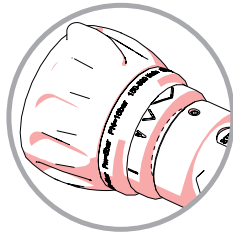
Compatible with the low expansion ref. 40508 medium expansion ref. 42101 foam attachments.



LEGENDE - Double attack spray



Compliant with the norm
EN 15182-2



Double attack spray possible by turning the head ring

Maximum working pressure: PN16
Shutoff: with slide valve
Opening: by operating handle
Flush position: yes
Double attack spray : 15° and 30°
Material: aluminium alloy
Surface treatment: polyester coating
Body type: molded
Diffusion head: cut teeth
Pistol grip : single

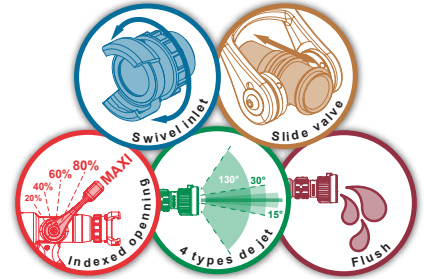
Options: low and medium expansion foam attachments.

Sheath colours: ●

In this configuration, the LEGEND NOZZLE allows the selection of two different angles of attack sprays: 15° or 30° depending on the needs.

Inlet	Flow rate	Working pressure	Dimensions (mm)	Weight (kg)	Ref.
1.5" female BSP	500 lpm	6 bar	260 x 127 x 257	2.3	44205

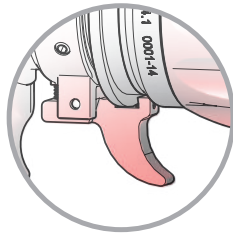
Compatible with the low expansion ref. 40508 medium expansion ref. 42101 foam attachments.



LEGENDE for electrical fire



Compliant with the norm
EN 15182-2



Trigger to lock the "STRAIGHT SPRAY" and "FLUSH" positions.

Maximum working pressure: PN16
Shutoff: with slide valve
Opening: by operating handle
Unlockable flush position : yes
Lockable straight spray: yes
Material: aluminium alloy
Surface treatment: polyester coating
Body type: molded
Diffusion head: cut teeth
Pistol grip : single

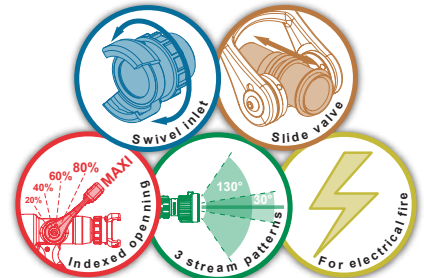
Options: low and medium expansion foam attachments.

Sheath colours: ●

Our range of autoregulated pressure "Legende" hand nozzles for electrical fires can be used to extinguish electric fires. The head ring with tactile markings allows different spray pattern selection (straight spray, flash over and wide angle spray). A security lock prevents the user from going to straight spray or flush accidentally. This device can only be unlocked by voluntary action. The indexed shutoff handle allows to adjust the different flow rates.

Inlet	Flow rate	Working pressure	Dimensions (mm)	Weight (kg)	Ref.
1.5" female NST-NH	400 lpm	6 bar	263 x 127 x 257	2.4	44307
2" male BSP	400 lpm	6 bar	263 x 127 x 257	2.4	42377
1.5" female BSP	500 lpm	6 bar	251 x 127 x 257	2.3	39652
Storz C/52	500 lpm	6 bar	298 x 127 x 257	2.7	39652.Storz

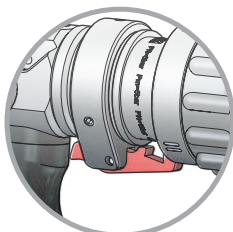
Compatible with the low expansion ref. 40508 and medium expansion ref. 42101 foam attachments



Compact LEGENDE for electrical fires



Compliant with the norm
EN 15182-2



Position trigger to lock "STRAIGHT SPRAY" and "FLUSH".

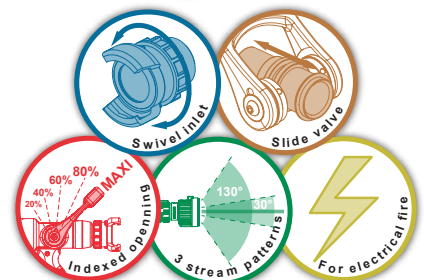
Maximum working pressure: PN16
Shutoff: with slide valve
Opening: by operating handle
Unlockable flush position : yes
Lockable straight spray: yes
Material: aluminium alloy
Surface treatment: hard anodisation
Body type : profile
Diffusion head: molded teeth
Pistol grip : single

Sheath colours: ●

This model allows to extend the use of the Legende nozzle to fires of electrical origin. As the flow rate is adjusted by means of the handle, it becomes very easy to work very precisely making the best use of the advantages of the diffuser for electrical fires.

Inlet	Flow rate	Working pressure	Dimensions (mm)	Weight (kg)	Ref.
1.5" female NPSH	400 lpm	6 bar	241 x 120 x 228	1.4	37403

Compatible with the low expansion foam attachment ref. 15621



Autoregulated pressure hand nozzles with slide valve



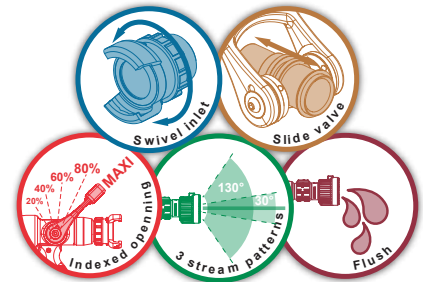
LEGENDE 400 with combined stream patterns



Maximum working pressure: PN16
Shutoff: with slide valve
Opening: by operating handle
Flush position: yes
Material: aluminium alloy
Surface treatment: hard anodisation
Body type : profile
Diffusion head: molded teeth
Pistol grip : single

Options: low expansion foam attachment.
Sheath colours: ●

Equips the Italian Navy



The "Legende" range of nozzles with autoregulated pressure and combined spray pattern allows the simultaneous use of a straight spray and a wide angle spray to protect the fireman and attack the fire. The indexed shutoff handle allows selection of the different flow rates.

Inlet	Flow rate	Working pressure	Dimensions (mm)	Weight (kg)	Ref.
M56x4 female (Uni 811)	400 lpm	6 bar	328 x 84 x 228	2	19368
Machino DN65 female	400 lpm	6 bar	334 x 113 x 228	2.4	42214

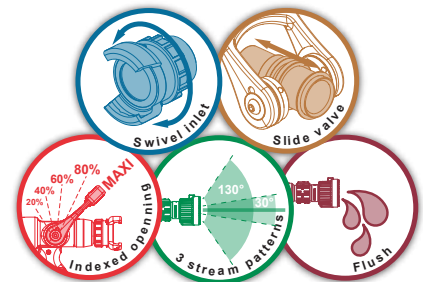
Compatible with the low expansion foam attachment ref. 15621

LEGENDE 750 with combined stream patterns



Maximum working pressure: PN16
Shutoff: with slide valve
Opening: by operating handle
Flush position: yes
Material: aluminium alloy
Surface treatment : polyester coated
Body type : molded
Diffusion head: molded teeth
Pistol grip : single

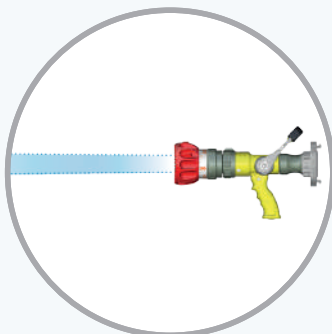
Options: low expansion foam attachment.
Sheath colours: ●●●



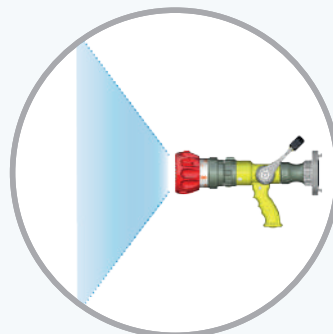
The "Legende" range of nozzles with autoregulated pressure and combined spray pattern allows the simultaneous use of a straight spray and a wide angle spray to protect the fireman and attack the fire. The indexed shutoff handle allows selection of the different flow rates. The indexed head ring with tactile markings allows the adjustment of the different stream patterns (straight spray, attack spray and wide angle spray).

Inlet	Flow rate	Working pressure	Dimensions (mm)	Weight (kg)	Ref.
Storz B/75	750 lpm	7 bar	408 x 126 x 258	4.2	28884

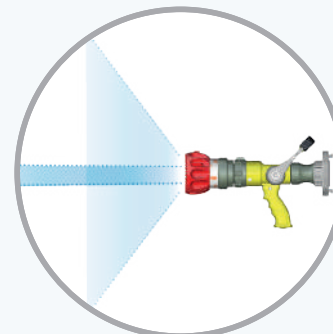
Compatible with the low expansion foam attachment ref. 25010



Straight spray position



Wide angle spray position

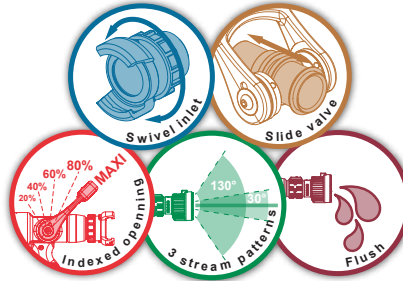


Combined stream pattern position



The whole range of ultra compact autoregulated pressure "Legende" nozzles offer an adjustable flow rate using an indexed shutoff handle.

There are three possibilities of heads (depending on the models) : molded rubber teeth, cut teeth and spinning teeth. The head ring allows to select from three types of stream patterns (straight spray, flashover and wide angle spray).



Maximum working pressure: PN16

Shutoff: with slide valve

Opening: by operating handle

Flush position: yes

Regulation range : from 100 to 600 lpm

Material: aluminium alloy

Surface treatment: polyester coating

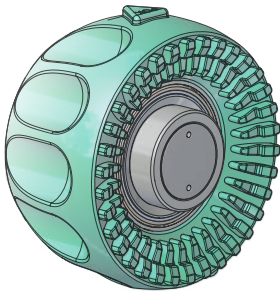
Body type: molded

Pistol grip : single

Options: low and medium expansion foam attachments.

Sheath colours:

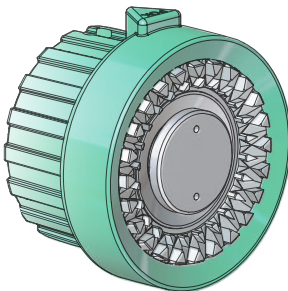
LEGENDE 600 - Molded rubber teeth



Inlet	Flow rate	Working pressure	Dimensions (mm)	Weight (kg)	Ref.
DSP DN40	600 lpm	6 bar	349 x 126 x 258	3.3	28062

Compatible with the low expansion foam attachment ref. 25010

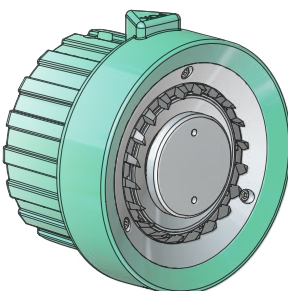
LEGENDE 600 - Cut teeth



Inlet	Flow rate	Working pressure	Dimensions (mm)	Weight (kg)	Ref.
DSP DN40	600 lpm	6 bar			29289

Compatible with the low expansion ref. 27487 medium expansion ref. 44308 foam attachments.

LEGENDE 600 - Spinning teeth



Inlet	Flow rate	Working pressure	Dimensions (mm)	Weight (kg)	Ref.
DSP DN40	600 lpm	6 bar	349 x 126 x 258	3.3	29290

Compatible with the low expansion ref. 27487 medium expansion ref. 44308 foam attachments.

Autoregulated pressure hand nozzles with slide valve



LEGENDE 750

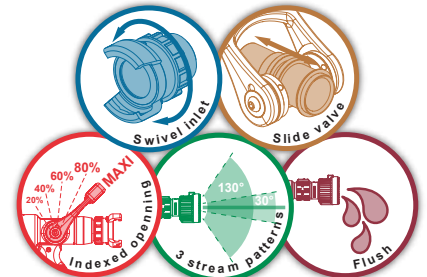


Maximum working pressure: PN16
Shutoff: with slide valve
Opening: by operating handle
Flush position: yes
Regulation range : from 400 to 750 lpm
Material: aluminium alloy
Surface treatment: hard anodisation
Body type : profile
Diffusion head: molded teeth
Pistol grip : single
Options: low and medium expansion foam attachments.
Sheath colours: ●

The Legende 750 nozzle combines efficiency and light weight. Its intermediate flow rate of 750 lpm, combined with its spraying capabilities, makes it a formidable weapon to extinguish fires. The flow rate adjustment by means of the indexed handle allows handling with precision and ease.

Inlet	Flow rate	Working pressure	Dimensions (mm)	Weight (kg)	Ref.
2.5" male BSP	750 lpm	6 bar	407 x 115 x 265	4	09403.750

Compatible with the low expansion foam attachment ref. 25015



LEGENDE 1000, double pistol grip

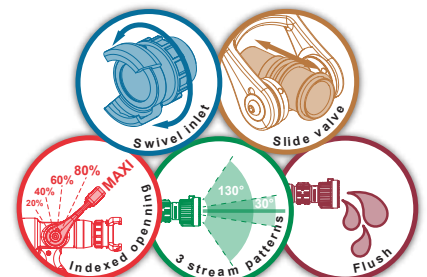


Maximum working pressure: PN16
Shutoff: with slide valve
Opening: by operating handle
Flush position: yes
Regulation range : from 400 to 1000 lpm
Material: aluminium alloy
Surface treatment: hard anodisation
Body type : profile
Diffusion head: molded teeth
Pistol grip : double
Options: low and medium expansion foam attachments.
Sheath colours: ●●●

The whole range of ultra compact autoregulated pressure "Legende" nozzles offer an adjustable flow rate using an indexed shutoff handle. The head sheath allows the adjustment of the different stream patterns (straight spray, attack spray and wide angle spray).

Inlet	Flow rate	Working pressure	Dimensions (mm)	Weight (kg)	Ref.
DSP DN65	1000 lpm	6 bar	478 x 337 x 155	5	09406

Compatible with the low expansion foam attachment ref. 25015



LEGENDE 1000, single pistol grip

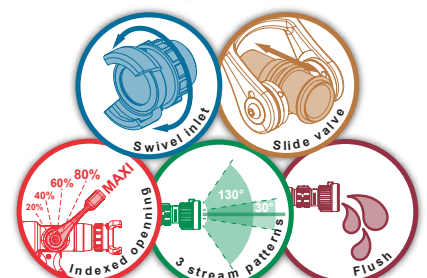


Maximum working pressure: PN16
Shutoff: with slide valve
Opening: by operating handle
Flush position: yes
Regulation range : from 400 to 1000 lpm
Material: aluminium alloy
Surface treatment: hard anodisation
Body type : profile
Diffusion head: molded teeth
Pistol grip : single
Options: low and medium expansion foam attachments.
Sheath colours: ●

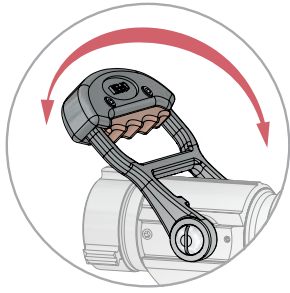
The Legende 1000 nozzle offers in this version an unrivalled efficiency and spray quality for a flow rate of 1000 lpm. Its ultra compact system for autoregulated pressure allows precise and pleasant flow rate selection thanks to the indexed shutoff handle.

Inlet	Flow rate	Working pressure	Dimensions (mm)	Weight (kg)	Ref.
2.5" male BSP	1000 lpm	6 bar	407 x 115 x 265	4	09403.FM2.5
Storz B/75	1000 lpm	6 bar			09403.B75
2.5" female BAT	1000 lpm	6 bar			09403.BAT
Storz DN65 Beijing	1000 lpm	6 bar	442 x 115 x 265	4.4	09403

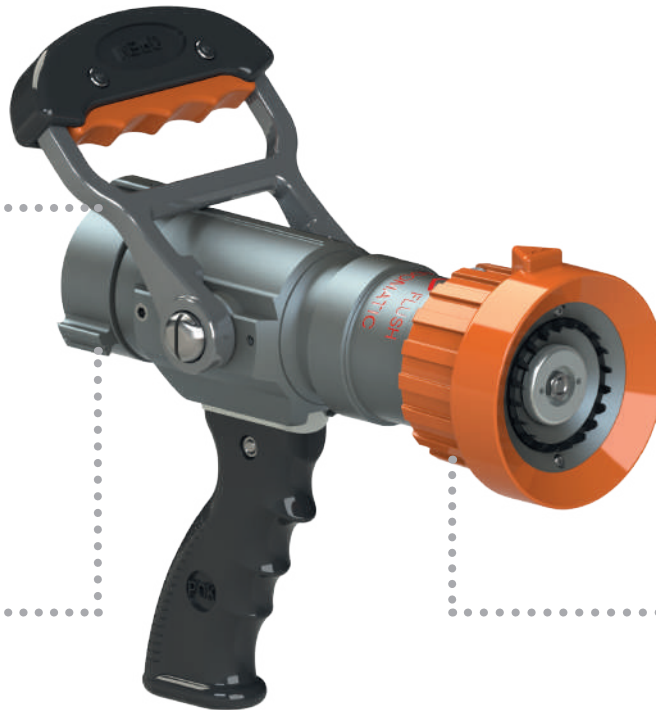
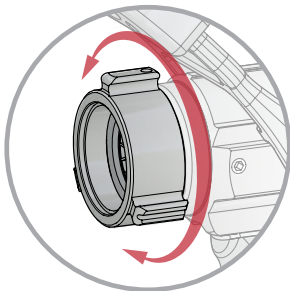
Compatible with the low expansion foam attachment ref. 25015



Shutoff handle with polyurethane cover. Ball valve shutoff with quick and progressive opening and closing.



Swivelling inlet coupling compliant with international norms

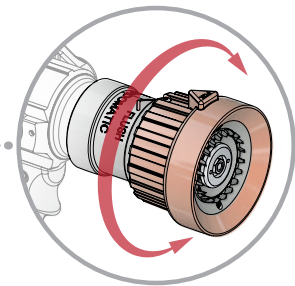


Polyurethane anti-shock head sheath with tactile markings indicating the different stream patterns.

Stream pattern selection on 3 positions:

- straight spray,
- attack spray(30°)
- full fog diffusion (110°)

The "FLUSH" or "PURGE" position is obtained at the stop position of the selection ring.



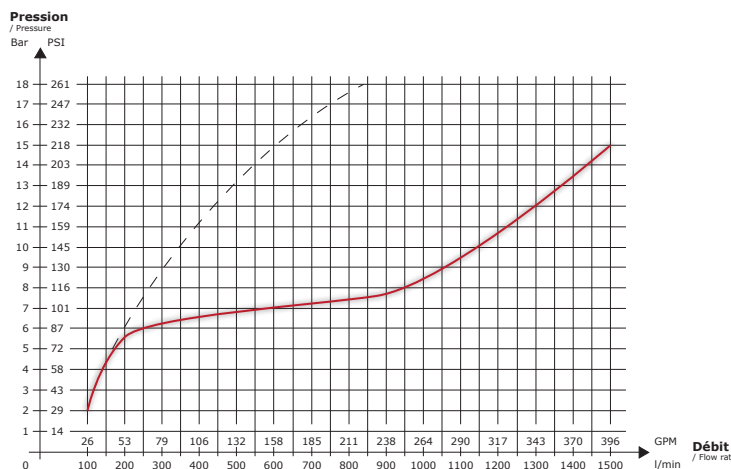
TECHNICAL CHARACTERISTICS

- **Adjustable stream pattern** : A continuous rotation of the indexed head ring allows the user to progress from a **straight spray**, to an **attack spray** also called "Flash Over", to a **diffusion cone of 110°** forming a wall of water, followed by a flush position to remove particles.
- Swivelling inlet coupling.
- **Protection filter** against pebbles at the inlet coupling.
- Maximum working pressure **PN16**.
- Quick Open/Closed shutoff valve.

FLOW RATE/PRESSURE GRAPH - For the 750 and 1000 lpm versions

This curve represents the pressure variation as a function of the flow rate inside the "TORNADOMATIC 750" and "TORNADOMATIC 1000" hand nozzles. We notice that the internal regulation device comes into action when the flow rate reaches a value of 300 lpm (80 GPM). After this point, the flow rate increase is carried out under an approximate constant pressure from 7 to 8 bar (100 to 116 psi) up to a value of 1000 lpm (260 GPM).

Note: The dotted lines show what the pressure should be to get the same flow rate without a regulation device.



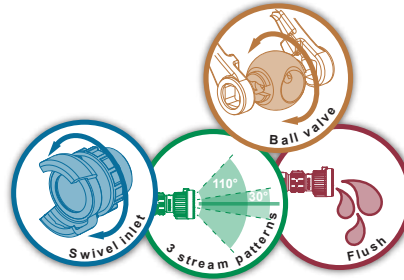
CONSTRUCTION

- Construction in **aluminium alloy**, new primary alloy, extremely light.
- Resistant to mechanical shocks and chemical attacks thanks to **50µ hard anodisation**.
- Head shock protection by means of a **polyurethane head sheath**. This elastomer does not melt when heated, and is an excellent insulator, which allows the user to work under high heat conditions without getting burnt, and does not stick to fingers in low temperatures.
- Very ergonomic, anti-slip (polyurethane) pistol grip.
- Stainless steel axles and screws.

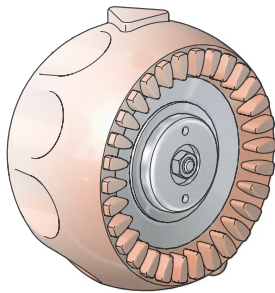


The family of 150 lpm autoregulated pressure hand nozzles offers a regulation range from 40 to 150 lpm and three possible heads to choose from: Maximatic (molded teeth), Autokador (cut teeth) and Tornadomatic (spinning teeth).
The head ring with tactile markings allows to select different stream patterns (straight spray, flashover and wide angle spray).
The nozzles are available in two versions: "ECO" and "Premium".

Maximum working pressure: PN16
Shutoff: with ball valve
Opening: by operating handle
Flush position: yes
Regulation range : from 40 to 150 lpm
Material: aluminium alloy
Surface treatment: hard anodisation
Body type: molded
Pistol grip : single
Options: low expansion foam attachment, medium expansion foam attachment.
Sheath colours:



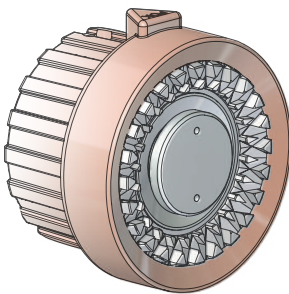
MAXIMATIC 150 - ECO



Inlet	Flow rate	Working pressure	Dimensions (mm)	Weight (kg)	Ref.
1" female BSP	150 lpm	6 bar	234 x 80 x 224	1.3	28688

Compatible with the low expansion foam attachment ref. 24985

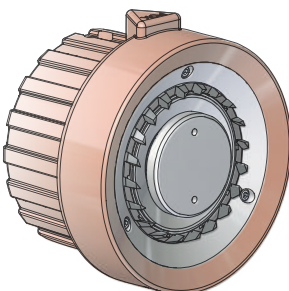
AUTOKADOR 150 - ECO



Inlet	Flow rate	Working pressure	Dimensions (mm)	Weight (kg)	Ref.
1" female BSP	150 lpm	6 bar	234 x 80 x 224	1.3	28689

Compatible with the low expansion ref. 09294 medium expansion ref. 09712 foam attachments.

TORNADOMATIC 150 - ECO



Inlet	Flow rate	Working pressure	Dimensions (mm)	Weight (kg)	Ref.
1" female BSP	150 lpm	6 bar	234 x 80 x 224	1.3	19647

Compatible with the low expansion ref. 09294 medium expansion ref. 09712 foam attachments.

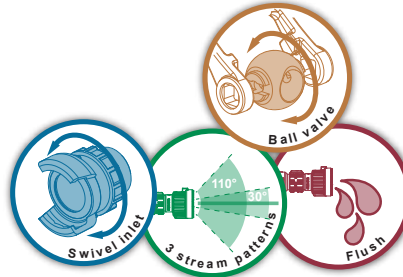


The family of 150 lpm autoregulated pressure hand nozzles offers a regulation range from 40 to 150 lpm and three possible heads to choose from: Maximatic (molded teeth), Autokador (cut teeth) and Tornadomatic (spinning teeth). The head ring with tactile markings allows to select different stream patterns (straight spray, flashover and wide angle spray). The nozzles are available in two versions: "ECO" and "Premium".

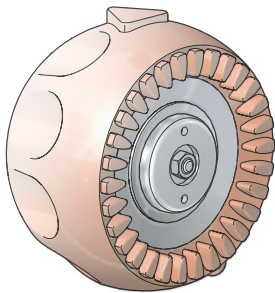
Maximum working pressure: PN16
Shutoff: with ball valve
Opening: by operating handle
Flush position: yes
Regulation range : from 40 to 150 lpm
Material: aluminium alloy
Surface treatment: hard anodisation
Body type : profile
Pistol grip : single

Options: low expansion foam attachment, medium expansion foam attachment.

Sheath colours:



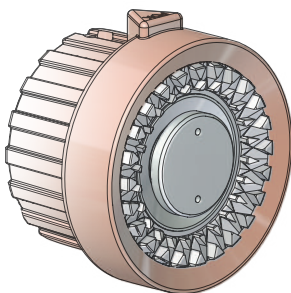
MAXIMATIC 150



Inlet	Flow rate	Working pressure	Dimensions (mm)	Weight (kg)	Ref.
1" female NST-NH	150 lpm	6 bar	233 x 126 x 266	1.9	18531

Compatible with the low expansion foam attachment ref. 24985

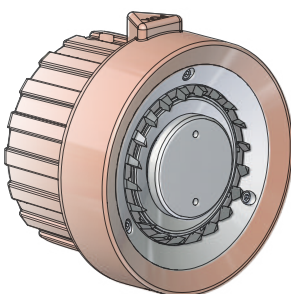
AUTOKADOR 150



Inlet	Flow rate	Working pressure	Dimensions (mm)	Weight (kg)	Ref.
1" female NST-NH	150 lpm	6 bar	233 x 126 x 266	1.9	18522

Compatible with the low expansion ref. 09294 medium expansion ref. 09712 foam attachments.

TORNADOMATIC 150



Inlet	Flow rate	Working pressure	Dimensions (mm)	Weight (kg)	Ref.
1" female NST-NH	150 lpm	6 bar	233 x 126 x 266	1.9	02317

Compatible with the low expansion ref. 09294 medium expansion ref. 09712 foam attachments.

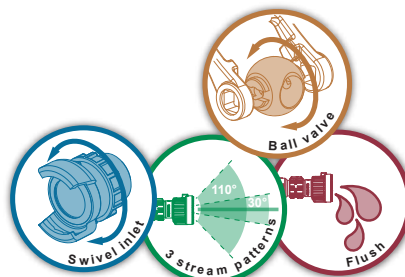


The family of autoregulated pressure 500 lpm hand nozzles offers a regulation range from 150 to 500 lpm and three possible heads to choose from: Maximatic (molded teeth), Autokador (cut teeth) and Tornadomatic (spinning teeth). The head ring with tactile markings enables to select different spray patterns (straight spray, flashover and wide angle spray).

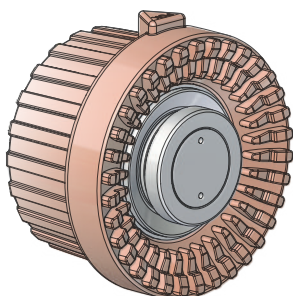
Maximum working pressure: PN16
Shutoff: with ball valve
Opening: by operating handle
Flush position: yes
Regulation range : from 150 to 500 lpm
Material: aluminium alloy
Surface treatment: hard anodisation
Body type : profile
Pistol grip : single

Options: low expansion foam attachment, medium expansion foam attachment.

Sheath colours:



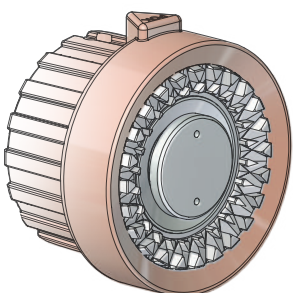
MAXIMATIC 500



Inlet	Flow rate	Working pressure	Dimensions (mm)	Weight (kg)	Ref.
DSP DN40	500 lpm	6 bar			18547
1.5" female NST-NH	500 lpm	6 bar			18550
Storz C/52	500 lpm	6 bar			18552
2.5" male Instantaneous	500 lpm	6 bar			18553

Compatible with the low expansion ref. 09297 and medium expansion ref. 09713 foam attachments

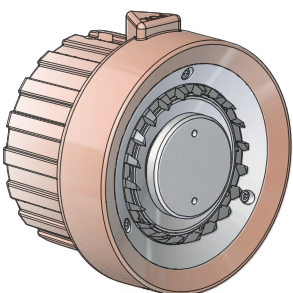
AUTOKADOR 500



Inlet	Flow rate	Working pressure	Dimensions (mm)	Weight (kg)	Ref.
1.5" female NST-NH	500 lpm	6 bar	267 x 126 x 266	2.4	18544

Compatible with the low expansion ref. 09297 medium expansion ref. 09713 foam attachments.

TORNADOMATIC 500

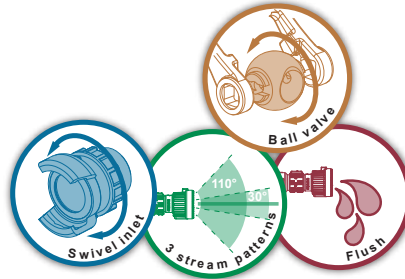


Inlet	Flow rate	Working pressure	Dimensions (mm)	Weight (kg)	Ref.
1.5" female NST-NH	500 lpm	6 bar	267 x 126 x 266	2.4	07674

Compatible with the low expansion ref. 09297 medium expansion ref. 09713 foam attachments.



The family of autoregulated pressure 750 lpm nozzles offers a regulation range from 230 to 750 lpm and two possible heads to choose from: Autokador (cut teeth) and Tornadomatic (spinning teeth). The head ring with tactile markings allows to select different stream patterns (straight spray, flashover and wide angle spray).

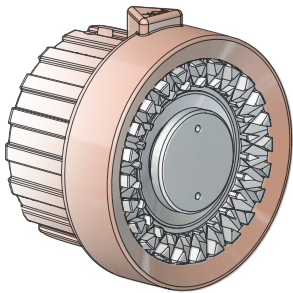


Maximum working pressure: PN16
Shutoff: with ball valve
Opening: by operating handle
Flush position: yes
Regulation range : from 230 to 750 lpm
Material: aluminium alloy
Surface treatment: hard anodisation
Body type : profile
Pistol grip : single

Options: low expansion foam attachment, medium expansion foam attachment.

Sheath colours:

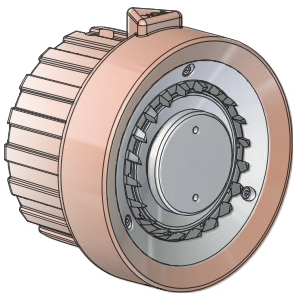
AUTOKADOR 750



Inlet	Flow rate	Working pressure	Dimensions (mm)	Weight (kg)	Ref.
1.5" female NST-NH	750 lpm	7 bar	248 x 126 x 272	3	18555
2.5" female NST-NH	750 lpm	7 bar			18556

Compatible with the low expansion ref. 09300 and medium expansion ref. 09714 foam attachments

TORNADOMATIC 750



Inlet	Flow rate	Working pressure	Dimensions (mm)	Weight (kg)	Ref.
1.5" female NST-NH	750 lpm	7 bar	248 x 126 x 272	3	02375
2.5" female NST-NH	200 GPM	7 bar			13131

Compatible with the low expansion ref. 09300 and medium expansion ref. 09714 foam attachments

Powder-foam branchpipe



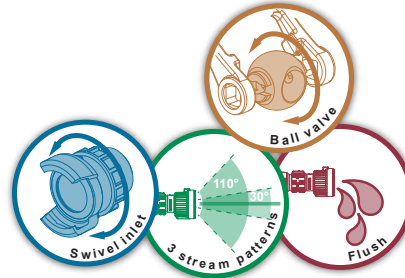


The 1000 lpm autoregulated pressure hand nozzles offer the maximum power a handheld nozzle can hold. The stream patterns are adjustable by rotation of the head ring (straight spray, flashover, wide angle spray). The nozzles are available with two types of diffusion heads: Autokador (cut teeth) and Tornadomatic (spinning teeth). It has two pistol grips for perfect control.

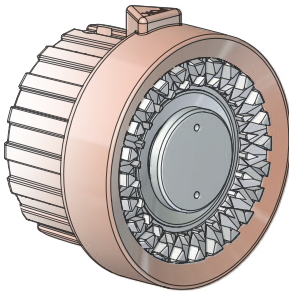
Maximum working pressure: PN16
Shutoff: with ball valve
Opening: by operating handle
Flush position: yes
Regulation range : from 300 to 1000 lpm
Material: aluminium alloy
Surface treatment: hard anodisation
Body type : profile
Pistol grip : double

Options: low expansion foam attachment, medium expansion foam attachment.

Sheath colours:



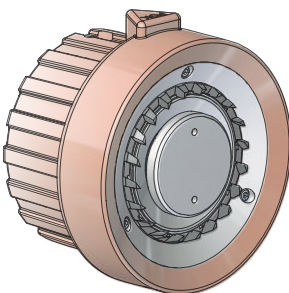
AUTOKADOR 1000



Inlet	Flow rate	Working pressure	Dimensions (mm)	Weight (kg)	Ref.
2.5" female NST-NH	1000 lpm	7 bar	358 x 338 x 166	4.8	12543

Compatible with the low expansion ref. 09300 medium expansion ref. 09714 foam attachments.

TORNADOMATIC 1000



Inlet	Flow rate	Working pressure	Dimensions (mm)	Weight (kg)	Ref.
2.5" female NST-NH	1000 lpm	7 bar	358 x 338 x 166	4.8	09736

Compatible with the low expansion ref. 09300 medium expansion ref. 09714 foam attachments.

VICTORY



Maximum working pressure: PN16
Shutoff: ball valve
Opening: by operating handle
Material: aluminium alloy
Surface treatment: hard anodisation
Body type : profile
Pistol grip : single

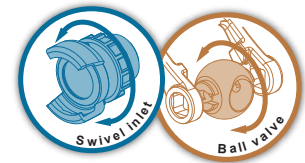
Sheath colours: ●

POK "Victory" official nozzle.

The "Victory" hand nozzle was specifically designed with the extreme handling of the "Firefighter Combat Challenge" in mind. The purpose of this event is not only to fight for the title of the best firefighter, but also to test equipment in intense conditions (it would take several years for a fire brigade to use its equipment as much under regular conditions).

During this competition, the "Victory" hand nozzle is used under pressure to reach a target, then thrown and dragged on the ground, for several hours in a row. As an answer to this need, the organizers asked POK to design and develop the official hand nozzle for this event. POK equipment is famous for withstanding strenuous conditions.

The "Victory" hand nozzle is made of aluminium alloy, with an ergonomic silicone pistol grip, and a 1/2" smooth bore tip. Many fire departments have chosen this nozzle as the standard among their primary attack hand nozzles.



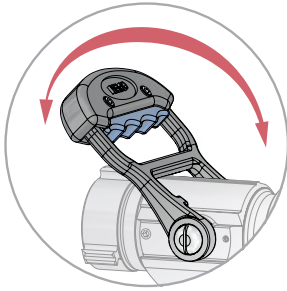
Inlet	Flow rate	Waterway Ø (mm)	Working pressure	Dimensions (mm)	Weight (kg)	Ref.
DSP DN40	250 lpm	12 mm	7 bar	272 x 115 x 258	1.7	08944.DSP40



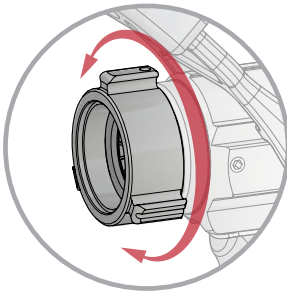
Hand nozzles with fixed flow rate and adjustable stream pattern



Shutoff handle with polyurethane cover. Ball valve shutoff with quick and progressive opening and closing.



Swivelling inlet coupling compliant with international norms

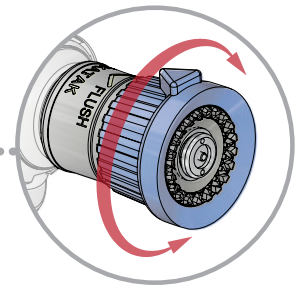


Polyurethane anti-shock head sheath with tactile markings indicating the different stream patterns.

Stream pattern selection on 3 positions:

- straight spray,
- attack spray (30°)
- full fog diffusion (110°)

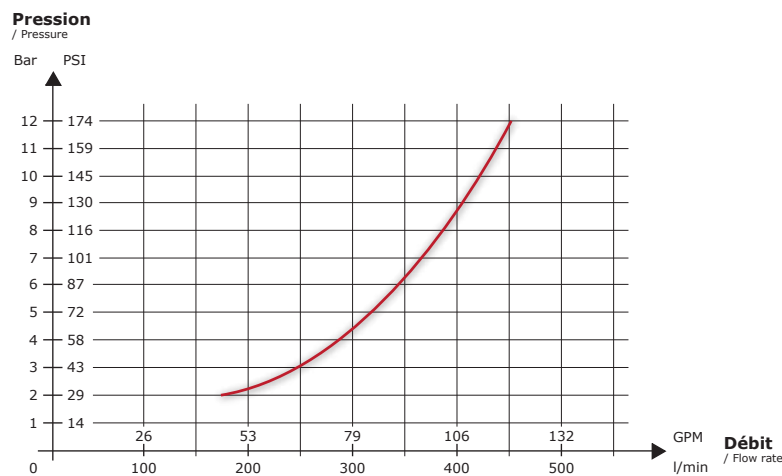
The "FLUSH" or "PURGE" position is obtained at the stop limit of the selection ring.



TECHNICAL CHARACTERISTICS

- Hand nozzle with fixed flow rate
- **Adjustable stream pattern** : A continuous rotation of the indexed head ring allows the user to progress from a **straight spray**, to an **attack spray** also called "Flash Over", to a **diffusion cone of 110°** forming a wall of water, followed by a flush position to remove any particles.
- **Swivelling inlet coupling**.
- **Protection filter** against pebbles at the inlet coupling.
- Functions under **PN16** nominal pressure.
- Quick Open/Closed shutoff valve.

FLOW RATE/PRESSURE GRAPH - For the 95 GPM @ 100 PSI (360 lpm @ 7 bar) version



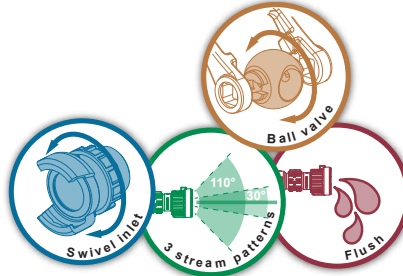
CONSTRUCTION

- Construction in **aluminium alloy**, new primary alloy, extremely light.
- Resistant to mechanical shocks and chemical attacks thanks to **50µ hard anodisation**.
- Head shock protection by means of a **polyurethane head sheath**. This elastomer does not melt when heated, and is an excellent insulator, which allows the user to work under high heat conditions without getting burnt, and does not stick to fingers in low temperatures.
- Very ergonomic, anti-slip (polyurethane) pistol grip.
- Stainless steel axles and screws.



Our range of 150 lpm fixed flow rate hand nozzles offers a selection of three stream patterns by rotating the head ring (straight spray, flashover and wide angle spray). The nozzles are available in the versions: "ECO" and "Premium".

This range of hand nozzles offers three possibilities of diffusion heads: Pokinor (moulded teeth), Pokatak (cut teeth) and Pokador (spinning teeth).

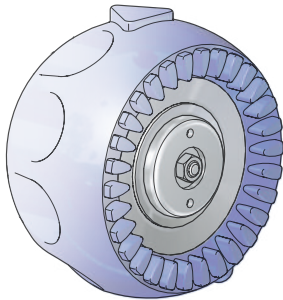


Maximum working pressure: PN16
Shutoff: with ball valve
Opening: by operating handle
Material: aluminium alloy
Surface treatment: hard anodisation
Body type: molded
Pistol grip: single

Options: low expansion foam attachment, medium expansion foam attachment.

Sheath colours:

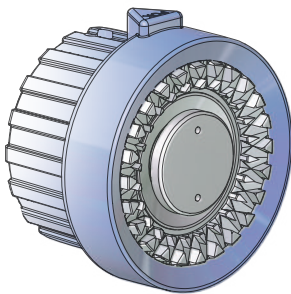
POKINOR 150 - ECO



Inlet	Flow rate	Working pressure	Dimensions (mm)	Weight (kg)	Ref.
1" female BSP	150 lpm *	6 bar	234 x 80 x 224	1.3	28690

Compatible with the low expansion foam attachment ref. 24985
 * other flow rates available on request

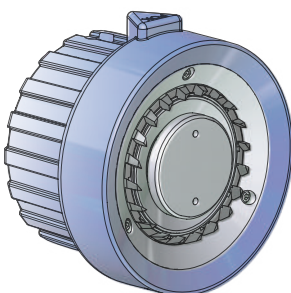
POKATAK 150 - ECO



Inlet	Flow rate	Working pressure	Dimensions (mm)	Weight (kg)	Ref.
1" female BSP	150 lpm *	6 bar	234 x 80 x 224	1.3	28691

Compatible with the low expansion ref. 09294 medium expansion ref. 09712 foam attachments.
 * other flow rates available on request

POKADOR 150 - ECO



Inlet	Flow rate	Working pressure	Dimensions (mm)	Weight (kg)	Ref.
1" female BSP	150 lpm *	6 bar	234 x 80 x 224	1.3	19652

Compatible with the low expansion ref. 09294 medium expansion ref. 09712 foam attachments.
 * other flow rates available on request

Hand nozzles with fixed flow rate and adjustable stream pattern



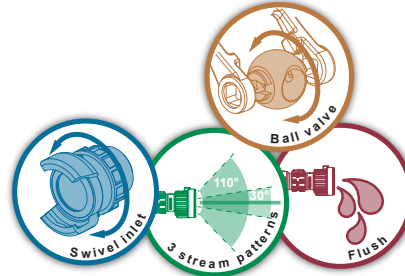
Our range of 150 lpm fixed flow rate hand nozzles offers a selection of three stream patterns by rotating the head ring (straight spray, flashover and wide angle spray). The nozzles are available in the versions: "ECO" and "Premium". This range of hand nozzles offers three possibilities of diffusion heads: Pokinor (moulded teeth), Pokatak (cut teeth) and Pokador (spinning teeth).

Maximum working pressure: PN16
Shutoff: with ball valve
Opening: by operating handle
Flush position: yes
Material: aluminium alloy
Surface treatment: hard anodisation
Body type : profile
Pistol grip : single

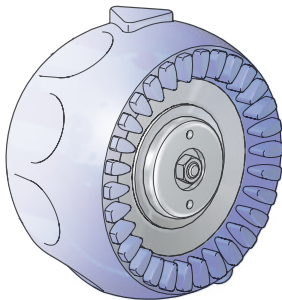
Options: low expansion foam attachment, medium expansion foam attachment.

Sheath colours:

Compliant with the norm EN 15182-2



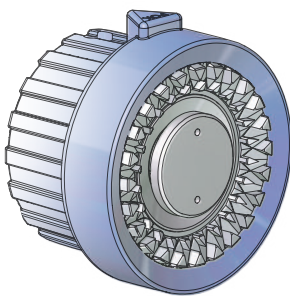
POKINOR 150



Inlet	Flow rate	Working pressure	Dimensions (mm)	Weight (kg)	Ref.
1" female NST-NH	150 lpm *	6 bar	233 x 126 x 266	1.9	45060

Compatible with the low expansion foam attachment ref. 24985
 * other flow rates available on request

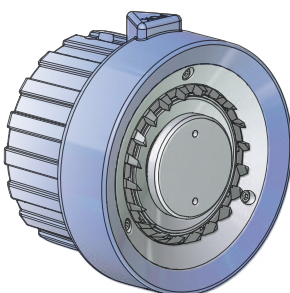
POKATAK 150



Inlet	Flow rate	Working pressure	Dimensions (mm)	Weight (kg)	Ref.
1" female NST-NH	150 lpm *	6 bar	233 x 126 x 266	1.9	45057

Compatible with the low expansion ref. 09294 medium expansion ref. 09712 foam attachments.
 * other flow rates available on request

POKADOR 150



Inlet	Flow rate	Working pressure	Dimensions (mm)	Weight (kg)	Ref.
1" female NST-NH	150 lpm *	6 bar	233 x 126 x 266	1.9	45054

Compatible with the low expansion ref. 09294 medium expansion ref. 09712 foam attachments.
 * other flow rates available on request



The range of 500 lpm fixed flow rate hand nozzles offers a selection of three stream patterns by rotating the head ring fit with tactile markers (straight spray, flashover and wide angle spray).

They are equipped with a quick open/close shutoff.

This range of hand nozzles offers three possibilities of diffusion heads: Pokinor (molded teeth), Pokatak (cut teeth) and Pokador (spinning teeth).

Maximum working pressure: PN16

Shutoff: with ball valve

Opening: by operating handle

Flush position: yes

Material: aluminium alloy

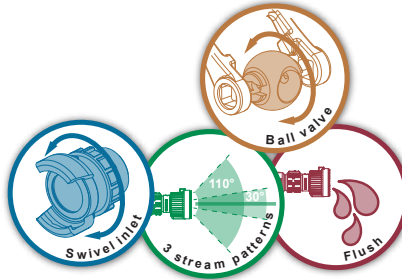
Surface treatment: hard anodisation

Body type : profile

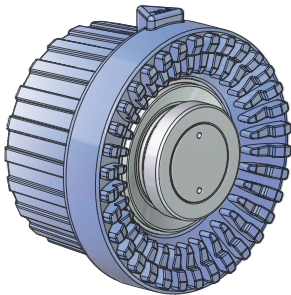
Pistol grip : single

Options: low expansion foam attachment, medium expansion foam attachment.

Sheath colours:



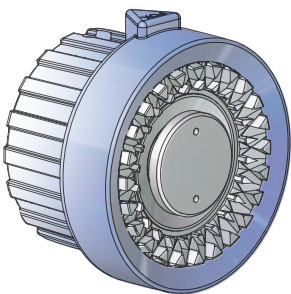
POKINOR 500



Inlet	Flow rate	Working pressure	Dimensions (mm)	Weight (kg)	Ref.
1.5" female NST-NH	500 lpm *	6 bar			18506
DSP DN40	500 lpm *	6 bar			18506.DSP40

Compatible with the low expansion ref. 09297 and medium expansion ref. 09713 foam attachments
* other flow rates available on request

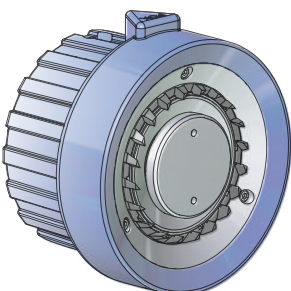
POKATAK 500



Inlet	Flow rate	Working pressure	Dimensions (mm)	Weight (kg)	Ref.
1.5" female NST-NH	500 lpm *	6 bar	267 x 126 x 266	2.4	18501

Compatible with the low expansion ref. 09297 medium expansion ref. 09713 foam attachments.
* other flow rates available on request

POKADOR 500



Inlet	Flow rate	Working pressure	Dimensions (mm)	Weight (kg)	Ref.
1.5" female NST-NH	500 lpm *	6 bar	267 x 126 x 266	2,4	03566

Compatible with the low expansion ref. 09297 medium expansion ref. 09713 foam attachments.
* other flow rates available on request

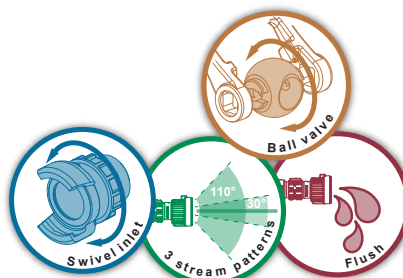
Hand nozzles with fixed flow rate and adjustable stream pattern



The range of 750 lpm fixed flow rate hand nozzles offers a selection of three stream patterns by rotating the head ring fit with tactile markers (straight spray, flashover and wide angle spray). They are equipped with a quick open/close shutoff.

They are equipped with a quick open/close shutoff.

This range of nozzles comes with two possibilities of diffusion heads: Pokatak (cut teeth) and Pokador (spinning teeth).

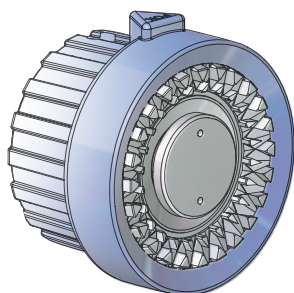


Maximum working pressure: PN16
Shutoff: with ball valve
Opening: by operating handle
Flush position: yes
Material: aluminium alloy
Surface treatment: hard anodisation
Body type : profile
Pistol grip : single

Options: low expansion foam attachment, medium expansion foam attachment.

Sheath colours: ●●●●●

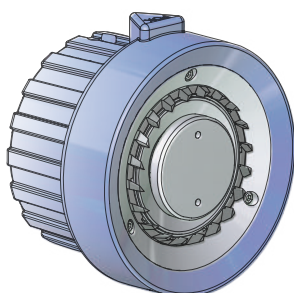
POKATAK 750



Inlet	Flow rate	Working pressure	Dimensions (mm)	Weight (kg)	Ref.
1.5" female NST-NH	750 lpm *	5 bar	248 x 126 x 272	3	18536

Compatible with the low expansion ref. 09300 medium expansion ref. 09714 foam attachments.
 * other flow rates available on request

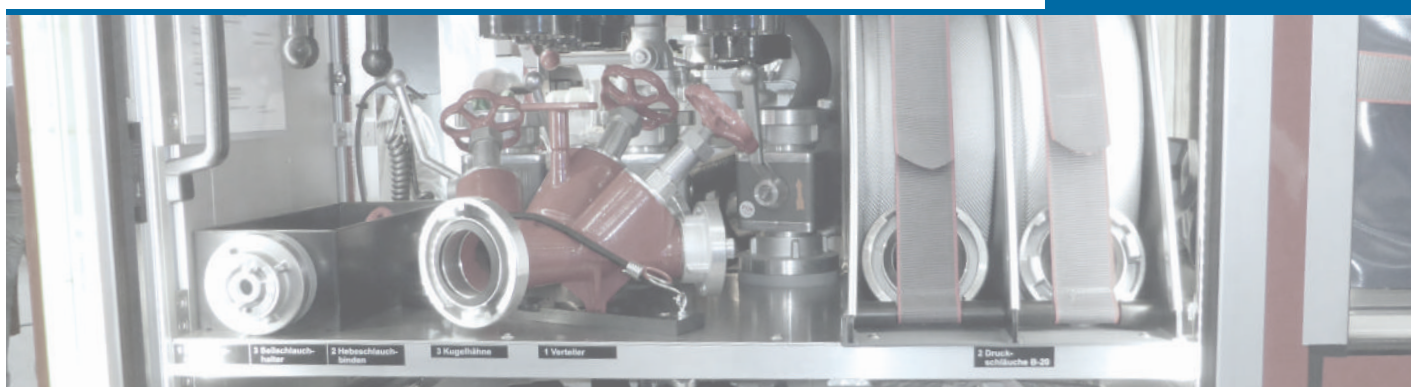
POKADOR 750



Inlet	Flow rate	Working pressure	Dimensions (mm)	Weight (kg)	Ref.
1.5" female NST-NH	750 lpm *	5 bar	248 x 126 x 272	3	08932

Compatible with the low expansion ref. 09300 medium expansion ref. 09714 foam attachments.
 * other flow rates available on request

Dividers with flywheel valves





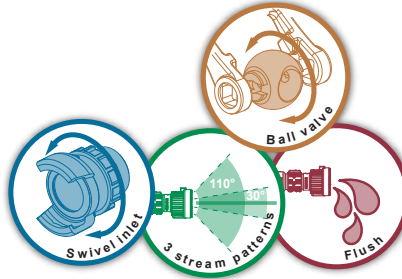
The range of 1000 lpm fixed flow rate hand nozzles provides the best possible power and manoeuvrability.

They are equipped with two pistol grips. The indexed head ring with tactile markings allows the adjustment of the different stream patterns (straight spray, attack spray and wide angle spray). The 1000 lpm hand nozzles are available with two different head types: Pokatak (cut teeth) and Pokador (spinning teeth).

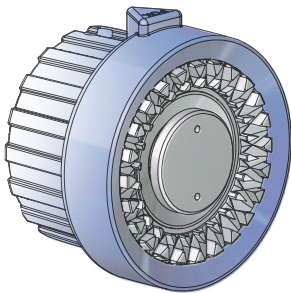
Maximum working pressure: PN16
Shutoff: with ball valve
Opening: by operating handle
Flush position: yes
Material: aluminium alloy
Surface treatment: hard anodisation
Body type : profile
Pistol grip : double

Options: low expansion foam attachment, medium expansion foam attachment.

Sheath colours:



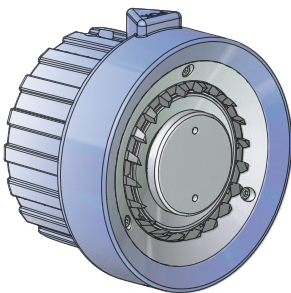
POKATAK 1000



Inlet	Flow rate	Working pressure	Dimensions (mm)	Weight (kg)	Ref.
2.5" female NST-NH	1000 lpm *	5 bar	358 x 338 x 166	4.8	18538

Compatible with the low expansion ref. 09300 medium expansion ref. 09714 foam attachments.
 * other flow rates available on request

POKADOR 1000



Inlet	Flow rate	Working pressure	Dimensions (mm)	Weight (kg)	Ref.
2.5" female NST-NH	1000 lpm *	7 bar	358 x 338 x 166	4.8	08934

Compatible with the low expansion ref. 09300 medium expansion ref. 09714 foam attachments.
 * other flow rates available on request

Hand nozzles with fixed flow rate and adjustable stream pattern



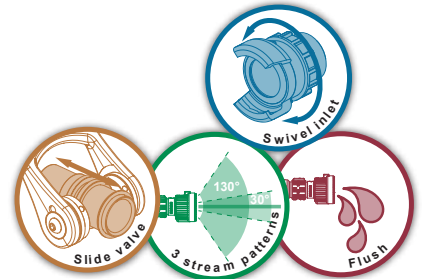
LEGENDE with fixed flow rate, cut teeth



Maximum working pressure: PN16
Shutoff: with slide valve
Opening: by operating handle
Flush position: yes
Material: aluminium alloy
Surface treatment: polyester coating
Body type: molded
Diffusion head: cut teeth
Pistol grip : single

Options: low expansion foam attachment.

Sheath colours: ●



The Legende 500 nozzle is part of the latest generation of POK hand nozzles with fixed-flow rate. It allows very efficient work in "Pulsing" mode. Its "Ultra compact" sliding valve system allows it to be as light and compact as a hand nozzle with adjustable flow rate.

Inlet	Flow rate	Working pressure	Dimensions (mm)	Weight (kg)	Ref.
DSP DN40	500 lpm	6 bar	305 x 127 x 257	2.5	41454

Compatible with the low expansion ref. 40508 medium expansion ref. 42101 foam attachments.

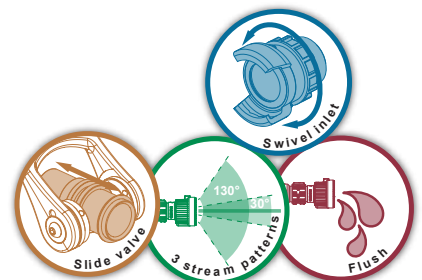
LEGENDE fixed flow, stainless steel spinning teeth



Maximum working pressure: PN16
Shutoff: with slide valve
Opening: by operating handle
Flush position: yes
Material: aluminium alloy
Surface treatment: polyester coating
Body type: molded
Head diffuser: spinning teeth
Pistol grip : single

Options: low expansion foam attachment.

Sheath colours: ●



Equipped with stainless steel spinning teeth, the Legende nozzle offers in this version impossible to rival thin droplets. Its diffused spray allows the user even better firefighting capabilities in confined spaces.

Inlet	Flow rate	Working pressure	Dimensions (mm)	Weight (kg)	Ref.
DSP DN40	500 lpm	6 bar	305 x 127 x 257	2.5	44355

Compatible with the low expansion ref. 40508 medium expansion ref. 42101 foam attachments.

Fire hose



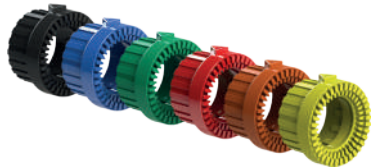
To customize your hand nozzles, we offer a wide range of colours for head sheaths, shutoff handle covers, and pistol grips, in polyamide.

Cylindrical head sheaths "smooth cone"



Description	Debikador Turbokador 150	Weight (kg)	Turbokador Debikador 500	Weight (kg)	Debikador 750	Weight (kg)	Debikador 1000	Weight (kg)
Black-RAL9005	13587	0.07	22477	0.14	22831	0.22	22710	0.25
Red-RAL3000	20931	0.07	22478	0.14	22832	0.22	22711	0.25
Orange-RAL2008	20932	0.07	22479	0.14	22833	0.22	22712	0.25
Yellow-RAL1021	20933	0.07	22480	0.14	22834	0.22	22713	0.25
Green-RAL6024	20934	0.07	22481	0.14	22835	0.22	22714	0.25
Blue-RAL5010	20936	0.07	22483	0.14	22837	0.22	22716	0.25

Molded rubber teeth cylindrical head sheaths



Description	Magikador 500	Weight (kg)	Magikador 750	Weight (kg)	Magikador 1000	Weight (kg)
Black-RAL9005	22975	0.16	22548	0.25	22989	0.3
Red-RAL3000	22976	0.16	22549	0.25	22990	0.3
Orange-RAL2008	22977	0.16	22550	0.25	22991	0.3
Yellow-RAL1021	22978	0.16	22551	0.25	22992	0.3
Green-RAL6024	22979	0.16	22552	0.25	22993	0.3
Blue-RAL5010	22981	0.16	22554	0.25	22995	0.3

Crowned head sheaths



Description	Magikador 150	Weight (kg)	Slide-o-matic 600	Weight (kg)	Legende 500	Weight (kg)
Black-RAL9005	24804	0.11	24818	0.31	24797	0.16
Red-RAL3000	24805	0.11	24819	0.31	24798	0.16
Orange-RAL2008	24806	0.11		0.31		0.16
Yellow-RAL1021	24807	0.11		0.31		0.16
Green-RAL6024	24890	0.11	24892	0.31	24894	0.16
Blue-RAL5010	24809	0.11		0.31		0.16

Shutoff handle sheaths and sub-sheaths



Description	French inscriptions	English inscriptions	German inscriptions	Chinese inscriptions	Spanish inscriptions	Sub-sheaths
Black-RAL9005	13675	13689	13696	27570	13703	23303
Red-RAL3000	13671	13685	13692	27566	13699	23300
Orange-RAL2008	13670	13684	13691	27565	13698	23299
Yellow-RAL1021	13669	13683	13690	27564	13697	23298
Green-RAL6024	13673	13687	13694	27568	13701	23301
Blue-RAL5010	13672	13686	13693	27567	13700	23304

Pistol grips



Description	Ref.	Weight (kg)
Black-RAL9005	24161	0.12
Red-RAL3000	24162	0.12
Orange-RAL2008	24163	0.12
Yellow-RAL1021	24164	0.12
Green-RAL6024	24165	0.12
Blue-RAL5010	24167	0.12

Polyamide shutoff handle



Description	Ref.	Weight (kg)
Black-RAL9005	17739	0.05
Red-RAL3000	16732	0.05
Orange-RAL2008	16731	0.05
Yellow-RAL1021	16730	0.05
Green-RAL6024	16734	0.05
Blue-RAL5010	16733	0.05

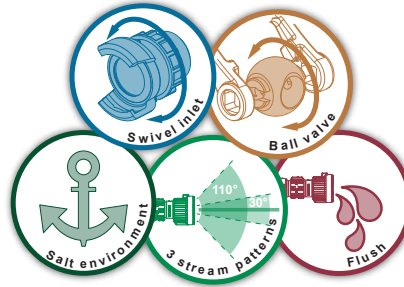
Fixed flow rate and adjustable stream pattern hand nozzles for marine environment



The fixed flowrate Pokabronze hand nozzle range is entirely made of bronze. It is equipped with a diffusion head with molded teeth.

The indexed head ring allows the selection of different stream patterns (straight spray, flashover and wide angle spray).

They are the hand nozzles the US Navy chose to protect its ships.



Maximum working pressure: PN16

Shutoff: with ball valve

Opening: by operating handle

Flush position: yes

Material: bronze

Body type: molded

Diffusion head: molded teeth

Pistol grip : single

Options: low expansion foam attachment, medium expansion foam attachment.

Sheath colours: ●

Equips the US Navy



POKABRONZE 500



Inlet	Flow rate	Working pressure	Dimensions (mm)	Weight (kg)	Ref.
1.5" female NST-NH	60 GPM	100 PSI	220 x 116 x 237	3.9	08986
1.5" female NST-NH	125 GPM	100 PSI	220 x 116 x 237	3.9	08988
1.5" female NPSH	95 GPM	100 PSI	220 x 116 x 237	3.9	14497
DSP DN40	500 lpm	6 bar			16184

Compatible with the low expansion ref. 09297 and medium expansion ref. 09713 foam attachments

POKABRONZE 1000



Inlet	Flow rate	Working pressure	Dimensions (mm)	Weight (kg)	Ref.
2" male BSP	1000 lpm	6 bar			16187
2.5" female NST-NH	250 GPM	100 PSI	273 x 120 x 243	5.7	17090

Compatible with the low expansion ref. 27487 and medium expansion ref. 44308 foam attachments



TURBOKABRONZE 500



Maximum working pressure: PN16
Shutoff: with ball valve
Opening: by operating handle
Flush position: yes
Material: bronze
Body type: molded
Head diffuser: spinning teeth
Pistol grip : single

Options: low expansion foam attachment, medium expansion foam attachment.

Sheath colours: ●

The adjustable flow rate and stream pattern Turbokabronze range is entirely made out of bronze.

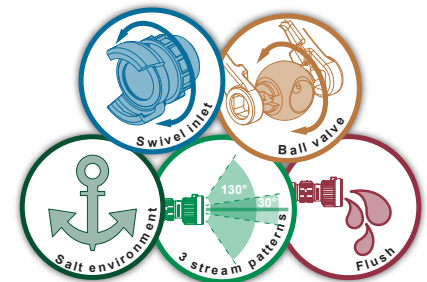
The calibrated flow rates are easily selectable by means of an indexed ring.

The head ring allows the adjustment of the different stream patterns (straight spray, attack spray and wide angle spray).

It is equipped with a diffusion head fit with spinning teeth.

Inlet	Flow rate	Working pressure	Dimensions (mm)	Weight (kg)	Ref.
1.5" female NST-NH	30-60-95 GPM	100 PSI	242 x 116 x 237	5	08945
1.5" female NST-NH	60-95-125 GPM	100 PSI	242 x 116 x 237	5	08946

Compatible with the low expansion ref. 09297 and medium expansion ref. 09713 foam attachments



Adjustable flow rate and stream patterns hand nozzles for marine environment

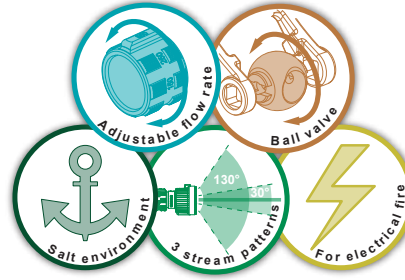


The adjustable flow rate and stream pattern Turbokabronze range offers a multitude of head possibilities: aluminium, bronze, electrical fires system (High Voltage Diffuser).

The stream pattern is adjustable by rotating the indexed head ring.

The calibrated flow rates are easily selectable by means of an indexed ring.

These nozzles withstand salt tests and have been developed for use in corrosive environments.



Maximum working pressure: PN16
Shutoff: with ball valve
Opening: by operating handle
Flush position: yes
Lockable straight spray: yes
Material: bronze, stainless steel, aluminium
Body type: molded
Head diffuser: spinning teeth
Pistol grip : single

Options: low expansion foam attachment, medium expansion foam attachment.

Sheath colours: ●



Certified by the French navy



TURBOKADOR 500 for electrical fires (High Voltage Diffuser) for marine environment

Body in stainless steel 316L, head in bronze for marine environment



Inlet	Flow rate	Working pressure	Dimensions (mm)	Weight (kg)	Ref.
SG DN40	200-300-500 lpm	6 bar	266 x 93 x 248	4.9	00235

Compatible with the low expansion ref. 09297 medium expansion ref. 09713 foam attachments.

TURBOKADOR 500 for electrical fires (High Voltage Diffuser) for marine environment

Body in stainless steel 316L, head in anodised aluminium alloy



Inlet	Flow rate	Working pressure	Dimensions (mm)	Weight (kg)	Ref.
SG DN40	200-300-500 lpm	6 bar	266 x 93 x 248	4.9	08049

Compatible with the low expansion ref. 09297 medium expansion ref. 09713 foam attachments.

Turbokador 500 for electrical fires (High Voltage Diffuser)

Body in stainless steel 316L, head in anodised aluminium alloy
 On this model, straight spray and flush positions are removed to provide better safety to the user.



Stainless steel and adjustable flow rate and stream pattern Turbokador version with aluminium head for electrical fires (High Voltage Diffuser).
 The stream pattern is adjustable by rotating the indexed head ring.
 The calibrated flow rates are easily selectable by means of an indexed ring.

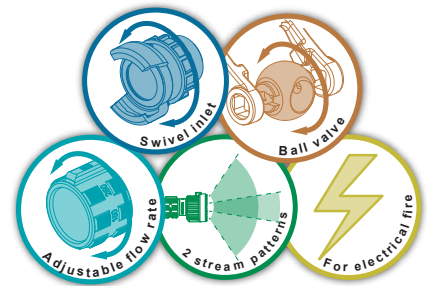
Inlet	Flow rate	Working pressure	Dimensions (mm)	Weight (kg)	Ref.
DSP DN40	150-300-500 lpm	6 bar	282 x 93 x 248	3.5	08031

Compatible with the low expansion ref. 09297 medium expansion ref. 09713 foam attachments.

Maximum working pressure: PN16
Shutoff: with ball valve
Opening: by operating handle
Material: stainless steel, aluminium
Body type: molded
Head diffuser: spinning teeth
Pistol grip : single

Options: low expansion foam attachment, medium expansion foam attachment.

Sheath colours: ●



Turbokador 500

Body in stainless steel 316L, anodised aluminium alloy head.



The stream pattern is adjustable by rotating the indexed head ring.
 The calibrated flow rates are easily selectable by means of an indexed ring.

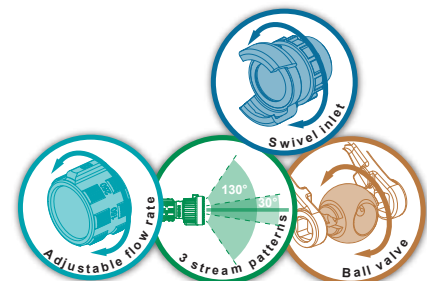
Inlet	Flow rate	Working pressure	Dimensions (mm)	Weight (kg)	Ref.
SG DN40	150-300-500 lpm	6 bar	282 x 93 x 248	3.5	09188

Compatible with the low expansion ref. 09297 medium expansion ref. 09713 foam attachments.

Maximum working pressure: PN16
Shutoff: with ball valve
Opening: by operating handle
Flush position: yes
Material: stainless steel, aluminium
Body type: molded
Head diffuser: spinning teeth
Pistol grip : single

Options: low expansion foam attachment, medium expansion foam attachment.

Sheath colours: ●



Adjustable flow rate and stream patterns hand nozzles



I-POK



Trigger lock button

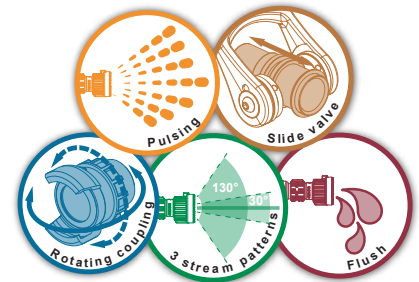
Maximum working pressure: PN16
Shutoff: with slide valve
Opening: by trigger
Trigger locking: yes
Flush position: yes
Material: aluminium
Surface treatment : polyester coated
Body type: molded
Diffusion head: molded teeth

Options: low expansion foam attachment, medium expansion foam attachment, carrying strap, swivel coupling.

Sheath colours:

Our "I-POK" hand nozzle range was designed to be used at a pressure of 6 bar. They are designed to exert force on the arm and not the wrist. The trigger system provides a powerful and efficient pulsing action. Possibility of fitting a diffusion head with adjustable flow rate and stream pattern.

Inlet	Flow rate	Working pressure	Dimensions (mm)	Weight (kg)	Ref.
1" female BSP	150 lpm	6 bar	318 x 78 x 305	2.5	28293



I-POK S



Trigger lock button

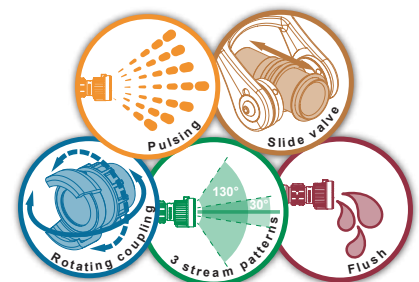
Maximum working pressure: PN16
Shutoff: with slide valve
Opening: by trigger
Trigger locking: yes
Flush position: yes
Material: aluminium
Surface treatment : polyester coated
Body type: molded
Diffusion head: molded teeth

Options: low expansion foam attachment, medium expansion foam attachment, carrying strap, swivel coupling.

Sheath colours:

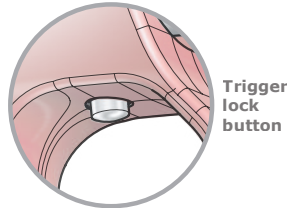
Our "I-POK" range of hand nozzles was designed to be used at a pressure of 6. The angled shape of the nozzle outlet reduces the recoil force in the wrist during use. The trigger system provides a powerful and efficient pulsing action. Possibility of fitting a diffusion head with adjustable flow rate and stream pattern.

Inlet	Flow rate	Working pressure	Dimensions (mm)	Weight (kg)	Ref.
1" female BSP	150 lpm	6 bar	383 x 70 x 305	2.7	28294



CRIQUET

Other diffuser heads on demand



Trigger lock button

Maximum working pressure: PN40
Shutoff: with slide valve
Opening: by trigger
Trigger locking: yes
Flush position: yes
Material: aluminium
Surface treatment: hard anodisation
Body type: molded
Diffusion head: molded teeth

Options: carrying strap, swivel coupling.

Sheath colours:

Our 100 lpm adjustable flow rate high pressure hand nozzle "CRIQUET" offers different adjustable stream patterns by rotating the head ring (straight spray, attack spray and wide angle spray).

It is equipped with a swivelling inlet coupling and a swivel elbow (optional) for better handling of the nozzle.

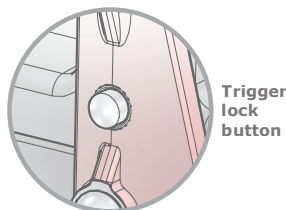
It is equipped with an operating handle with trigger lock. The trigger unlocks automatically by pressing the handle.

Inlet	Flow rate	Working pressure	Dimensions (mm)	Weight (kg)	Ref.
1" female BSP	50-75-100 lpm	20 bar	369 x 78 x 276	2,3	44119



DAMSTER

Other diffuser heads on demand



Trigger lock button

Maximum working pressure: PN40
Shutoff: with slide valve
Opening: by trigger
Trigger locking: yes
Flush position: yes
Material: aluminium
Surface treatment: hard anodisation
Body type: molded
Diffusion head: molded teeth

Options: carrying strap, swivel coupling.

Sheath colours:

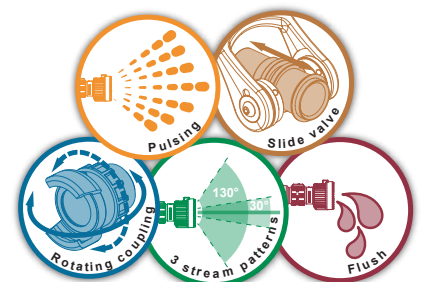
Our high pressure hand nozzle "DAMSTER" was designed to be used at a pressure of 20 bar.

It is equipped with a swivelling inlet coupling and a swivel elbow (optional) for better handling of the nozzle.

The calibrated flow rates are easily selectable by means of an indexed ring (depend on the model). The indexed head ring with tactile markings allows the adjustment of the different stream patterns (straight spray, attack spray and wide angle spray).

It is equipped with a trigger with a trigger lock. The trigger unlocks automatically by pressing the handle.

Inlet	Flow rate	Working pressure	Swivel coupling	Dimensions (mm)	Weight (kg)	Ref.
1" female BSP	50-75-100 lpm	20 bar	•	400 x 88 x 330	3	35707
1" female BSP	250 lpm	25 bar	•	372 x 95 x 326	3,4	44956
1" female BSP	250 lpm	25 bar	-	369 x 95 x 330	3,2	44693





Our high pressure hand nozzle "Aquastar" was designed to be used at a pressure of 20 or 30 bar depending on the model.

It offers easily adjustable flow rates using its indexed ring.

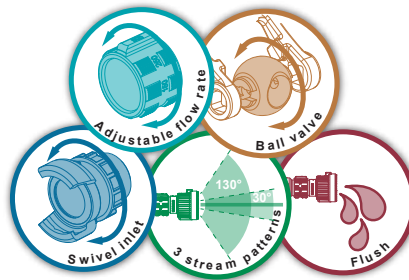
The rotation of the head ring with tactile marks allows the selection of the different stream patterns (straight spray, flashover and wide angle spray)

It is made entirely of aluminium alloy with 50µm hard anodisation. Two versions with stainless steel bodies are also available.

Maximum working pressure: PN40
Shutoff: with ball valve
Opening: by operating handle
Flush position: yes
Material: aluminium alloy and stainless steel
Surface treatment: hard anodisation
Body type: molded
Head diffuser: spinning teeth

Options: low expansion foam attachment, medium expansion foam attachment, swivel coupling.

Sheath colours:

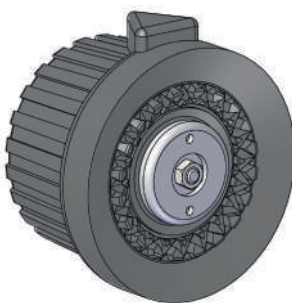


AQUASTAR - Molded teeth



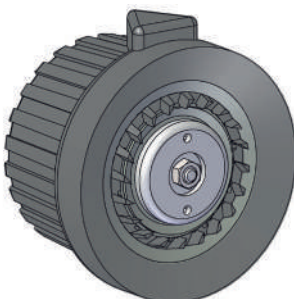
Inlet	Flow rate	Working pressure	Dimensions (mm)	Weight (kg)	Ref.
1" Female BSP	100-160-225 L/min	20 bar	259 x 93 x 232	1,4	45519

AQUASTAR - Cut teeth



Inlet	Flow rate	Working pressure	Dimensions (mm)	Weight (kg)	Ref.
1" Female BSP	55-90-120 L/min	20 bar	259 x 93 x 232	1,4	45515
1" Female BSP	20-50-90 L/min	6 bar	259 x 93 x 232	1,4	45533
1" Female BSP	50-120-200 L/min	30 bar	259 x 93 x 232	1,4	45533
GFR Female DN20	40-75-100-150 L/min	6 bar	307 x 93 x 232	1,9	47404
1" Female BSP	40-75-100-150 L/min	6 bar	259 x 93 x 232	1,4	47409

AQUASTAR - Spinning teeth



Inlet	Flow rate	Working pressure	Dimensions (mm)	Weight (kg)	Ref.
3/4" Female BSP	100 - 160 - 225 L/min	20 bar	259 x 93 x 232	1,6	39585 *
1" Female BSP	100 - 160 - 225 L/min	20 bar	259 x 93 x 232	1,6	40240 *
1" Female BSP	100 - 160 - 225 L/min	20 bar	259 x 93 x 232	1,4	40420
1" Female BSP	40-75-100-150 L/min	6 bar	259 x 93 x 232	1,4	45916
1" Female BSP	90-130-170-220 L/min	6 bar	259 x 93 x 232	1,4	45939

*Body made of stainless steel

OPTIMAL NOZZLE

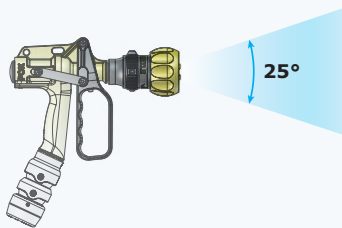


Matériel breveté
Elaboré en association avec
IFPEN

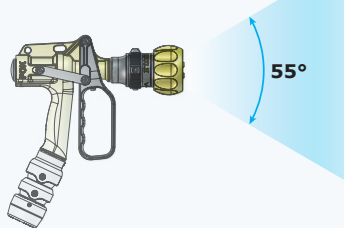


Trigger lock button

Attack spray: 240 lpm



Wide angle spray: 70 lpm



Maximum working pressure: PN16
Shutoff: with slide valve
Opening: by trigger
Trigger locking: yes
Flush position: yes
Material: aluminium
Surface treatment: polyester coated
Body type: molded
Head diffuser: smooth

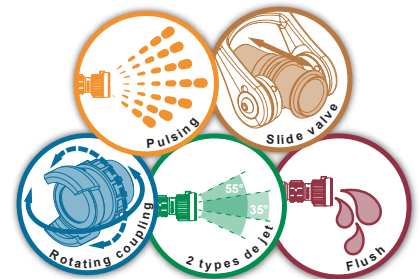
Options : carrying strap.

Sheath colours:

This hand nozzle was specifically designed to extinguishing indoor fires. The hand nozzles design makes it easy to adjust the flow rate, the stream patterns and the use of pulsing. A simple rotation of the head switches from a 25° attack spray with 240 lpm to a 55° spray with a flow rate of 70 lpm.

The combination of these two settings, combined with the trigger manoeuvring, makes it possible to use this nozzle for ceiling testing, gas cooling, and creating an effective water mist or attacking the fire at its base.

Inlet	Flow rate	Working pressure	Dimensions (mm)	Weight (kg)	Ref.
1" female BSP	240 lpm	6 bar	326 x 82 x 387	2.9	30052.FF1
DSP DN40	240 lpm	6 bar	326 x 82 x 387	2.9	30052



POKADOR 150 - 80 mm version



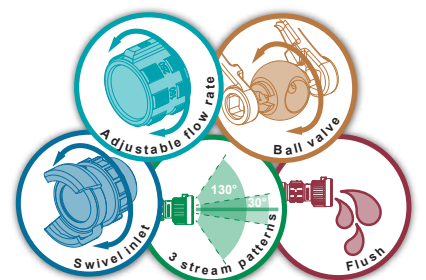
Maximum working pressure: PN16
Shutoff: with ball valve
Opening: by operating handle
Flush position: yes
Material: aluminium
Surface treatment: hard anodisation
Body type : profile
Diffusion head: molded teeth

Options: low expansion foam attachment, medium expansion foam attachment.

Sheath colours:

The Pokador hand nozzle, in this simplified version, offers robustness and efficiency. Its simple shape allows a very good grip, and the stream pattern quality is excellent thanks to its adjustable stream pattern head diffuser.

Inlet	Flow rate	Working pressure	Dimensions (mm)	Weight (kg)	Ref.
Storz C/52	115 lpm	5 bar	363 x 115 x 141	2.3	37327



GALAXIE

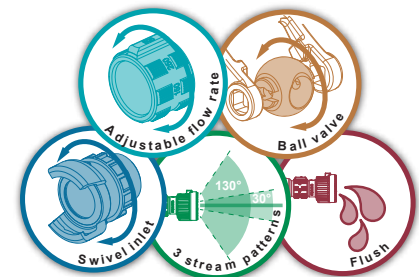


Maximum working pressure: PN16
Shutoff: with ball valve
Opening: by operating handle
Flush position: yes
Material: aluminium
Surface treatment: polyester coating, hard anodisation
Body type: molded
Head diffuser: spinning teeth

Options: low expansion foam attachment, medium expansion foam attachment.

Sheath colours: ●

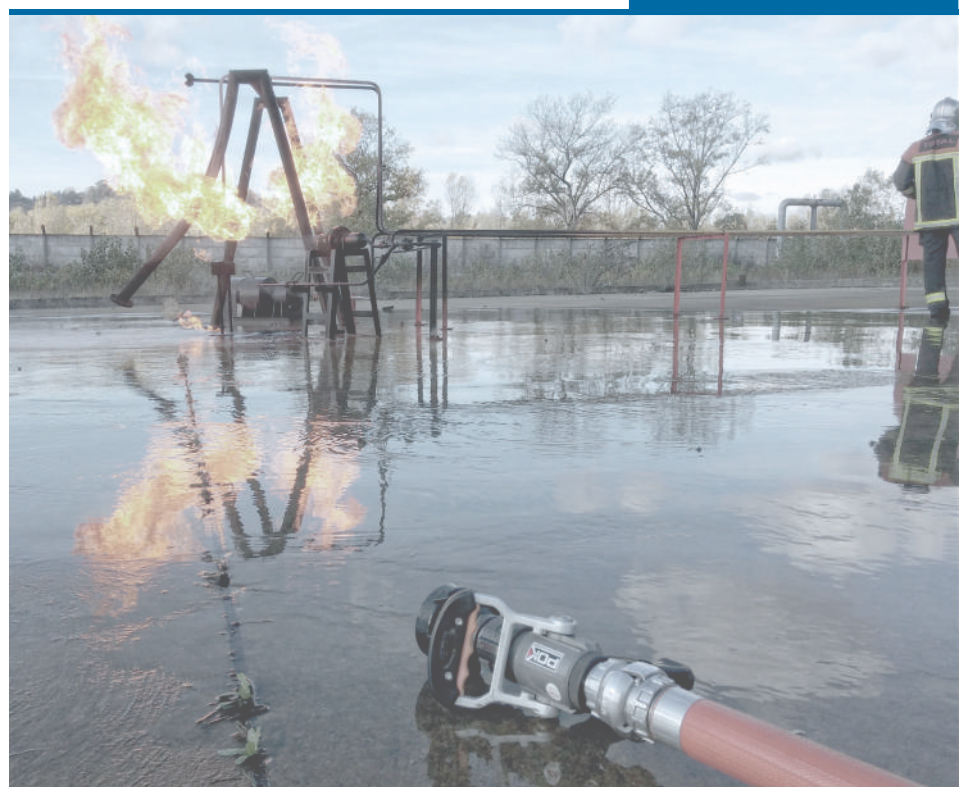
The "Galaxie" hand nozzle represents simplicity and efficiency. It has a flow rate that can be adjusted by turning the indexed flow ring: 60, 120, 240, 360 and 480 lpm at 6 bar. The indexed head ring allows the adjustment of the different stream patterns (straight spray, attack spray and wide angle spray). It has a diffusion head equipped with spinning teeth. Opening and closing by means of the operating handle.



Inlet	Flow rate	Working pressure	Dimensions (mm)	Weight (kg)	Ref.
DSP DN40	60-120-240-360-480 lpm	6 bar	248 x 126 x 254	1.9	18655

Compatible with the low expansion ref. 09297 medium expansion ref. 09713 foam attachments.

MAGIKADOR hand nozzle



CHINAJET 12



The "Chinajet 12" hand nozzle was designed specifically to meet the requirements of the asian markets.

It has a simple and robust design: stream pattern adjustable by rotating the indexed head ring (straight spray, attack spray and wide angle spray).

The opening and closing is done through the "gamma" handle.

It is equipped with a diffusion head with molded teeth.

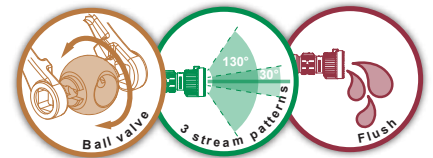
Inlet	Flow rate	Working pressure	Dimensions (mm)	Weight (kg)	Ref.
Machino male DN65	720 lpm	6 bar	362 x 130 x 238	3.6	17832
2.5" male instantaneous	720 lpm	6 bar			17832. Instantaneous

Compatible with the low expansion ref. 27487 medium expansion ref. 44308 foam attachments.

Maximum working pressure: PN16
Shutoff: with ball valve
Opening: by operating handle
Flush position: yes
Material: aluminium
Surface treatment: polyester coating, hard anodisation
Body type: molded
Diffusion head: molded teeth

Options: low expansion foam attachment, medium expansion foam attachment.

Sheath colours: ●



FLASH



Our "Flash" hand nozzle range combines simplicity and robustness.

They are available in three flow rates: 100, 240 and 400 lpm at 6 bar.

The different stream patterns are adjustable by rotating the indexed head ring.

The "gamma" handle allows the opening and closing of the hand nozzle.

Inlet	Flow rate	Working pressure	Dimensions (mm)	Weight (kg)	Ref.
Storz C/52	100 lpm	6 bar	277 x 122 x 241	1.8	20810
2" female BSP	240 lpm	6 bar	277 x 122 x 241	1.8	20013
Storz C/52	400 lpm	6 bar	277 x 122 x 241	1.8	20814

Compatible with the low expansion ref. 09294 medium expansion ref. 09712 foam attachments.

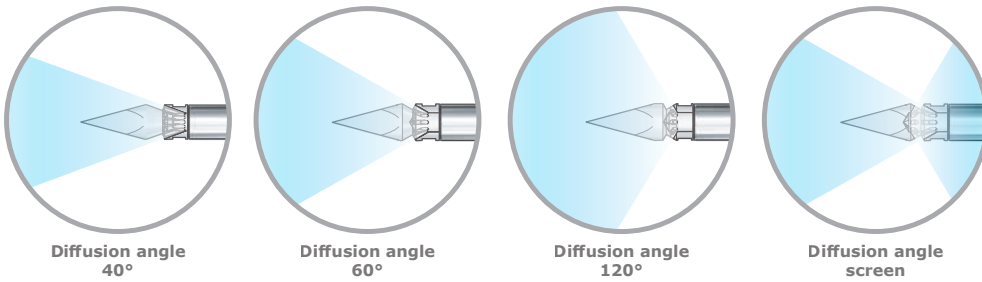
Maximum working pressure: PN16
Shutoff: with ball valve
Opening: by operating handle
Material: aluminium
Surface treatment: polyester coating, hard anodisation
Body type: molded
Head diffuser: smooth

Options: low expansion foam attachment, medium expansion foam attachment.

Sheath colours: ●



"BELIER BABY"



The "Belier BABY" hand nozzle makes it possible to work in confined spaces. It is characterized by a great robustness thanks to its stainless steel construction. It offers 4 types of stream pattern.

Maximum working pressure: PN16
Material: stainless steel

Inlet	Diffusion angle	Flow rate	Working pressure	Dimensions (mm)	Weight (kg)	Ref.
3/4" female BSP	40°	100 lpm	5 bar	660 x 36 x 70	2	42160
3/4" female BSP	60°	100 lpm	5 bar	660 x 36 x 70	2	40504
3/4" female BSP	120°	100 lpm	5 bar	660 x 36 x 70	2	40503
3/4" female BSP	Screen	100 lpm	5 bar	660 x 36 x 70	2	40505

"BELIER"



Our "belier" hand nozzle is designed to access and extinguish fires in closed rooms. It is available in its "Light" version with ball valve shutoff and equipped with a stainless steel tip diffusion head.

It is of particularly robust design, with stainless steel construction.

Maximum working pressure: PN16
Opening: by operating handle
Material: stainless steel



Inlet	Flow rate	Working pressure	Dimensions (mm)	Weight (kg)	Ref.
3/4" female BSP	100 lpm	5 bar	760 x 128 x 77	2.3	39573
2.5" male instantaneous	100 lpm	5 bar	774 x 180 x 98	2.8	39642
DSP DN40	100 lpm	5 bar	777 x 215 x 95	2.8	39640
Storz C/52	100 lpm	5 bar	780 x 165 x 107	2.7	39589

The "Belier" hand nozzle is designed to access and extinguish fires in closed rooms. It is of particularly robust design, with stainless steel construction.

Four gripping handles allow intervention in pairs.

It offers the possibility of several configurations: short or long extension, shutoff...

It is equipped with a diffusion head with interchangeable stainless steel tip.

Maximum working pressure: PN16

Valve type: optional

Material: stainless steel

Options: shutoff with ball valve, with or without pistol handle



"BELIER" HAND NOZZLE - 1550



Inlet	Flow rate	Working pressure	Shutoff	Length (mm)	Weight (kg)	Ref.
1.5" female NST-NH	460 lpm	7 bar	•	1550	12	02306
SG DN40	460 lpm	7 bar		1550	12	09409
Swivelling 1.5" female NST-NH	460 lpm	7 bar		1759	12	41273

"BELIER" HAND NOZZLE - 920



Inlet	Flow rate	Working pressure	Shutoff	Length (mm)	Weight (kg)	Ref.
1.5" female NST-NH	460 lpm	7 bar	•	920	8.4	08955
2.5" male Instantaneous	560 lpm	7 bar	•	920	8.5	42507

"BELIER" hand nozzle accessories - Stainless steel head



Description	Flow rate	Working pressure	Weight (kg)	Ref.
Head in stainless steel ISO M36 x 200 male	250 lpm	6 bar	0.7	40303
Head in stainless steel ISO M36 x 200 male	460 lpm	7 bar	1.2	00801

"BELIER" hand nozzle accessories - Stainless steel tip



Description	Weight (kg)	Ref.
Stainless steel tip	0.08	14468

"BELIER" hand nozzle accessory - Straight pipe



Description	Weight (kg)	Ref.
Straight pipe, without shutoff, without head, without tip, 1.5" female NST-NH	1.9	11926

"BELIER" hand nozzle accessory - Bracket



Description	Weight (kg)	Ref.
Aluminium "Belier" hand nozzle bracket	0.5	18689

The fog hand nozzle is used to clean large tanks.

A diffusion head is screwed at the end of the hand nozzle to ensure homogeneous diffusion.

Depending on the shape of the tank, several configurations are possible: 45° or 90° elbow.

It can also be equipped with a filter shutoff allowing flow opening and closing.

Maximum working pressure: PN16
Shutoff: with ball valve
Opening: by operating handle
Material: aluminium alloy

Sheath colours:

Version without extension,
with 45° elbow end cap



FOG HAND NOZZLE - Filter shutoff



Inlet	Outlet	Flow rate	Working pressure	Dimensions (mm)	Weight (kg)	Ref.
SG DN40	SG DN40	460 lpm	7 bar	407 x 127 x 163	2.4	07353

Accessory FOG HAND NOZZLE - Straight extension



Inlet	Outlet	Dimensions (mm)	Weight (kg)	Ref.
SG DN40	SG DN40	1600 x 75 x 75	1.3	07357

Accessory FOG HAND NOZZLE - 90° elbow end



Inlet	Outlet	Dimensions (mm)	Weight (kg)	Ref.
SG DN40	1" male BSP	1673 x 75 x 406	1.4	07354

Accessory FOG HAND NOZZLE - 45° elbow end



Inlet	Outlet	Dimensions (mm)	Weight (kg)	Ref.
SG DN40	1" male BSP	1778 x 75 x 306	1.3	07356

Accessory FOG HAND NOZZLE - Diffusion head



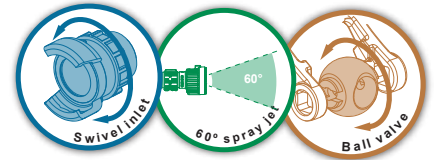
Inlet	Flow rate	Working pressure	Dimensions (mm)	Weight (kg)	Ref.
1" female BSP	460 lpm	7 bar	152 x 42 x 42	1.3	23066

"FEUX DE CHEMINEES" hand nozzle



Maximum working pressure: PN16
Shutoff: with ball valve
Opening: by operating handle
Material: aluminium alloy
Surface treatment: hard anodisation
Body type : profile
Head diffuser: smooth

The "feux de cheminees" hand nozzle can be used for beam, fake ceiling, or chimney, fires. It is of robust and light design. It offers a flow rate limited to 25 lpm to avoid water damage. It consists of an American shutoff, a straight element with a 45° elbow at the end and a conical diffuser with a diffusion angle of 60°.



Inlet	Flow rate (lpm)	Working pressure	Dimensions (mm)	Weight (kg)	Ref.
GFR female DN20	25	6 bar	970 x 95 x 336	1.7	03529

Pouring spouts



Maximum working pressure: PN16
Material: aluminium alloy
Body type : profile
Head diffuser: smooth

High quality aluminium alloy pouring spouts. It is available in straight and angled version.



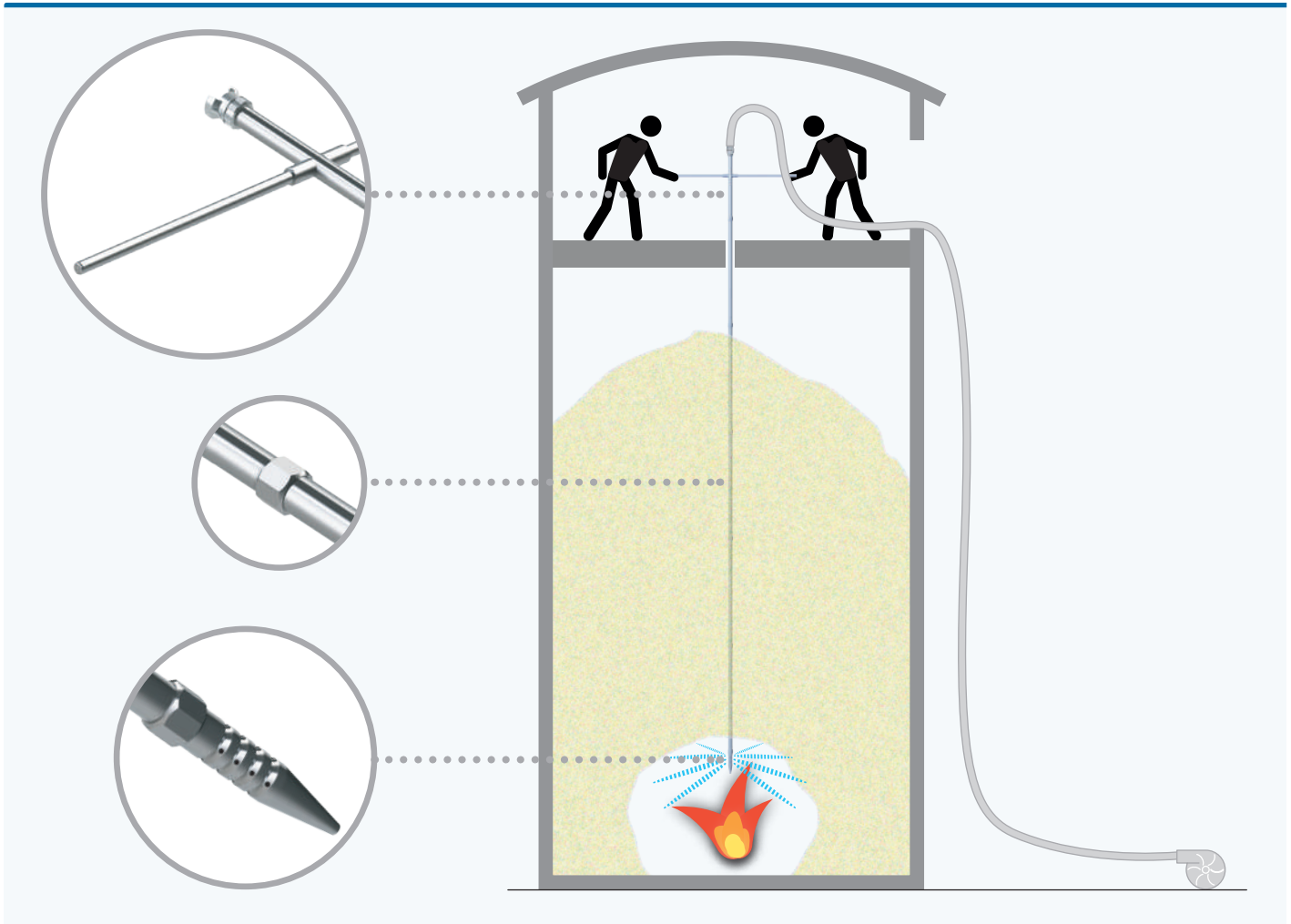
Inlet	Waterway Ø	Profile	Dimensions (mm)	Weight (kg)	Ref.
SG DN50	25	Angled	313 x 166 x 90	0.76	08922
SG DN50	25	Straight	256 x 90 x 90	0.64	08923

Motorised monitor nozzle DN200



The "Gerico" hand nozzle has been specifically designed for silo fires. Thanks to its various extensions, it allows to reach the heart of the fire located several dozen meters away in the silo. It is composed of a manoeuvring handle equipped with a diffusion head. Its configuration offers the possibility to add the number of extensions required depending on the type of incident.

Maximum working pressure: PN16
Material: stainless steel



"GERICO" hand nozzle



Inlet	Flow rate (lpm)	Working pressure	Length (mm)	Weight (kg)	Ref.
SG DN40	640	7 bar	3850	19	13250

Extension



Description	Weight (kg)	Ref.
1.50m stainless steel extension cable, 1"1/4 BSP female inlet, 1"1/4 BSP male outlet	5.1	24566

Our range of hand nozzle shutoffs offers various configuration possibilities: with or without handle, one or two grip, horseshoe Gamma or DIN operation handle, threaded inlet and outlet or coupling, aluminium alloy or bronze construction.



Maximum working pressure: PN16
Shutoff: with ball valve
Opening: by operating handle or lever
Material: aluminium alloy or bronze

Sheath colours:

Threaded swivel inlet shutoffs, american threading



Inlet	Outlet	Waterway Ø (mm)	Weight (kg)	Ref.
Swivelling 1" female NST-NH	Fixed 1" male NST-NH	25	1	09981
Swivelling 1.5" female NST-NH	Fixed 1.5" male NST-NH	25	1.2	09983
Swivelling 1.5" female NST-NH	Fixed 1.5" male NST-NH	35	1.2	09985
Swivelling 2.5" female NST-NH	Fixed 1.5" male NST-NH	35	1.6	09986
Swivelling 2.5" female NST-NH	Fixed 2.5" male NST-NH	52	2.2	09989

Shutoffs for hand nozzles, ISO threading



Inlet	Outlet	Waterway Ø (mm)	Weight (kg)	Ref.
Swivelling ISO M24 x 200 female	Fixed ISO M24 x 200 male	10	1.1	07290
Swivelling ISO M52 x 300 female	Fixed ISO M52 x 300 male	35	1	02466
Swivelling ISO M36 x 200 female	Fixed ISO M36 x 200 male	20	1	07291

BSP threaded fixed inlet and outlet shutoffs



Inlet	Outlet	Waterway Ø (mm)	Weight (kg)	Ref.
1.5" male BSP	1.5" male BSP	35	1.3	09740
1.5" female BSP	1.5" male BSP	35	1.1	07320
2.5" male BSP	2.5" male BSP	52	1.8	07322
2.5" male BSP	2.5" female BSP	52	1.8	07323
2" male BSP	2" male BSP	35	1.2	13278

Shutoffs for hand nozzles in bronze



Inlet	Outlet	Waterway Ø (mm)	Weight (kg)	Ref.
ISO M36 x 200 female	Fixed ISO M36 x 200 male	20	1.2	07301

Shutoffs with molded body



Inlet	Outlet	Waterway Ø (mm)	Weight (kg)	Ref.
2" male BSP	1.5" female BSP	32	0.6	13211
2" male BSP	2" female BSP	32	0.6	13212
Storz C/52	1.25" female BSP	32	1	13213
Storz C/52	1.5" female BSP	32	0.9	13214
Storz C/52	2" female BSP	32	0.9	13215
2" male BSP	1.25" female BSP	32	0.7	13210

Our range of hand nozzle shutoffs offers various configuration possibilities: with or without handle, one or two grip, horseshoe Gamma or DIN operation handle, threaded inlet and outlet or coupling, aluminium alloy or bronze construction.



Maximum working pressure: PN16
Shutoff: with ball valve
Opening: by operating handle or lever
Material: aluminium alloy or bronze

Sheath colours:

Shutoffs with one pistol grip



Inlet	Outlet	Waterway Ø (mm)	Weight (kg)	Ref.
Swivelling 1" female NST-NH DSP DN40, with lock	Fixed 1" male NST-NH ISO M36 x 200 male	15 25	0.9 1.3	13341 02981
Swivelling 1" female NST-NH	Fixed 1" male NST-NH	25	1.3	09982
Swivelling 1.5" female NST-NH	Fixed 1.5" male NST-NH	25	1.5	09984
Swivelling 2.5" female NST-NH	Fixed 1.5" male NST-NH	35	2.2	09987
Swivelling 1.5" female NST-NH	Fixed 1.5" male NST-NH	35	1.5	09990

Shutoffs with two pistol grips



Inlet	Outlet	Waterway Ø (mm)	Weight (kg)	Ref.
Swivelling 2.5" female NST-NH	Fixed 1.5" male NST-NH	35	3	09988

Shutoffs with molded body



Inlet	Outlet	Waterway Ø (mm)	Weight (kg)	Ref.
Swivelling 1.5" female NST-NH	Fixed 1.5" male NST-NH	35	1.7	07669
Swivelling 1.5" female NST-NH	Fixed 1.5" male NST-NH	32	1.2	90017

Shutoffs with two grips



Inlet	Outlet	Waterway Ø (mm)	Weight (kg)	Ref.
Storz C/52	1.5" female BSP	32	1.6	28005

Fire in Terre-Neuve (Newfoundland), single-family houses are made of wood and built very close to each other with a small gap. When the first one burns and the wind blows, the whole street burns. Professionally laid out, our water screen protects the whole street.

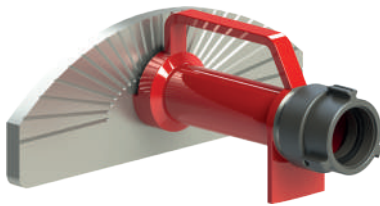
Our range of waterwall nozzle is used for fire protection of tanks and equipment sensitive to heat or sparks.

The diffusion plate of the aluminium waterwall nozzles is equipped with grooves allowing a better conservation of the stream pattern during difficult climate conditions (wind).

It is equipped with a handle and a stabilizing device.

Maximum working pressure: PN16
Material: aluminium alloy
Surface treatment : polyester coated
Handle: one
Body type: molded

Mobile waterwall nozzles



Inlet	Flow rate	Working pressure	Dimensions (mm)	Weight (kg)	Ref.
DSP DN40	300 lpm	6 bar	259 x 320 x 130	1.4	16096. ROUGE
DSP DN40	500 lpm	6 bar	259 x 320 x 130	1.4	03528
DSP DN40, with lock	400 lpm	6 bar	287 x 320 x 130	1.6	37758
DSP DN50	500 lpm	6 bar	259 x 320 x 130	1.5	16527
1.5" female NST-NH	500 lpm	6 bar	242 x 320 x 130	1.5	02238
DSP DN65	500 lpm	6 bar	257 x 320 x 130	1.6	03527
2" male BSP	500 lpm	6 bar	206 x 320 x 130	1.2	09016
Storz C/52	500 lpm	6 bar	241 x 320 x 130	1.5	09017
2.5" female NST-NH	1200 lpm	6 bar	336 x 399 x 160	3.4	02239
2.5" male BSP	1200 lpm	6 bar	289 x 399 x 160	3	09018
Storz B/75	1200 lpm	6 bar	327 x 399 x 160	3.4	09019
DSP DN65	1200 lpm	6 bar	330 x 399 x 160	3.2	09380
2.5" male BSP	1400 lpm	7 bar	289 x 399 x 160	3	33863
2.5" male Instantaneous	1800 lpm	8 bar	339 x 399 x 160	3.2	37012

Fixed waterwall nozzles



Inlet	Flow rate	Working pressure	Dimensions (mm)	Weight (kg)	Ref.
1.5" ASA 150 flange	500 lpm	6 bar	206 x 320 x 132	2.5	37496

Stainless steel waterwall nozzles are made for marine environment.

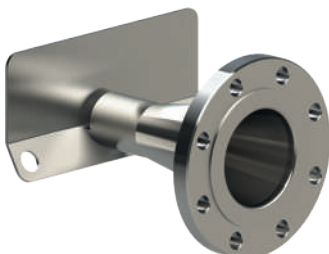
Maximum working pressure: PN16
Material: stainless steel

Mobile stainless steel waterwall nozzles



Inlet	Flow rate	Working pressure	Dimensions (mm)	Weight (kg)	Ref.
2" male NPT	1200 lpm	6 bar	106 x 300 x 145	2.2	23135
2.5" male NPT	460 lpm	8 bar	106 x 300 x 145	2.2	40607

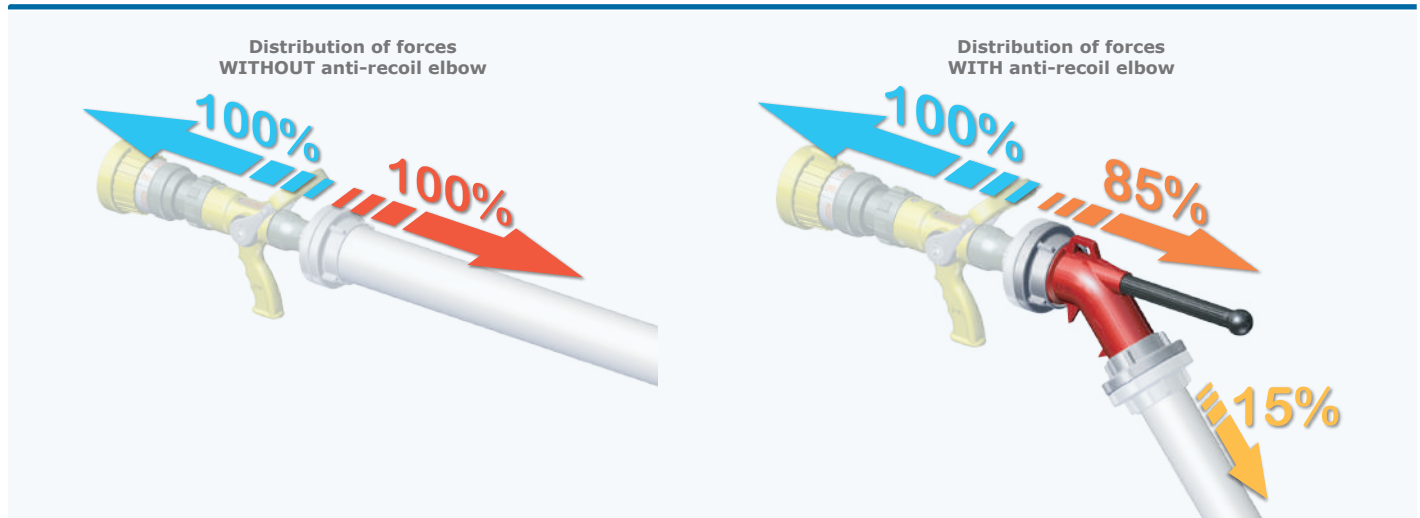
Fixed stainless steel waterwall nozzles



Inlet	Flow rate	Working pressure	Dimensions (mm)	Weight (kg)	Ref.
1.5" ASA 150 flange	500 lpm	7 bar	99 x 127 x 127	1.8	37452
4" ASA 150 flange	1400 lpm	8 bar	253 x 300 x 229	8.3	34482

DESCRIPTION

The anti-recoil elbow DIN 14-368 is supplied in all firefighting vehicles in Germany, Austria, as well as all countries that refer to the German DIN standard. The anti-recoil elbow is used when the capacity of the hand nozzle exceeds 400 lpm at 6 bar. Its basic function is to reduce the effort weighing on the operator. The effort is reduced by about 15%. A fire nozzle of 500 lpm at 6 bar exerts a reaction force of 30 kg. Reducing this reaction to 25.5 kg is felt immediately, reducing fatigue and improving the hand nozzle operators safety. The DIN standard anti-recoil elbow has a handle to facilitate gripping. The handle may also be positioned on the shoulder of the operator. A hook on the bottom of the device allows to fix it on a ladder or a railing. The anti-recoil elbow DIN 14-368 is equipped with Storz B/75 couplings that can be easily replaced by 2.5" British Instantaneous couplings, 2.5" American NST-NH couplings, or DSP DN65 French couplings. When the couplings are of the symmetric type, the inlet and outlet can be mounted on the device, the flipped elbow positioned on the ground, thus eliminating the recoil force for the operator.



Maximum working pressure: PN16
 Handle: one
 Material: aluminium alloy
 Surface treatment : polyester coated
 Body type: molded

Anti-recoil elbows - PN16



Description	Weight (kg)	Ref.
Inlet Storz B/75, swivelling Storz B/75 outlet	1.9	14930
Storz DN65 inlet, swivelling Storz DN65 outlet (N)	1.9	16034
2.5" male Instantaneous inlet, 2.5" female Instantaneous outlet	2	16035.BS336
Swivelling 2.5" female NST-NH inlet, 2.5" male NST-NH outlet	1.7	16036
DSP DN65 inlet with lock, DSP DN65 outlet with lock	2.2	16037
2.5" male BSP, 2.5" female BSP	1	16035

According to
DIN 14 368
PVR 1/05



Anti-recoil elbows - PN16



Description	Weight (kg)	Ref.
DN40, with DSP DN40 (NF S 61-704) coupling with lock	1.3	02282
DN65, with DSP DN65 (NF S 61-704) coupling with lock	2.9	02283
DN40, swivelling 1.5" female NST-NH inlet, 1.5" male NST-NH outlet	1	02308
DN65, swivelling 2.5" female NST-NH inlet, 2.5" male NST-NH outlet	3	02309
DN40, 1.5" BSP male threaded inlet and outlet	0.7	07042
DN40, Storz C/52 inlet with lock, swivelling Storz C/52 outlet	1.4	09015

When the nozzle operator wishes to reduce the recoil force, five solutions are available to him:

-1- Use a recoil elbow that allows a portion of the force to press on the inclined hose (stiffened by pressure) and use the weight of the operator to balance another portion, reducing by about 15% the effort required to balance the reaction force of the nozzle in action.



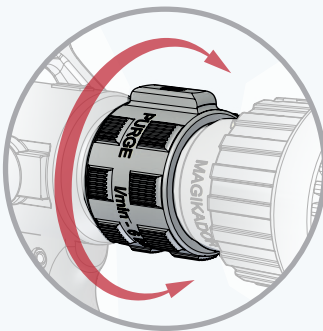
-2- Sit on the hose, pulling the nozzle positioned between the legs towards oneself (with various variants of this position).



-3- Switch to full spray.



-4- Reduce the flow with the flow control ring.



-5- Reduce the supply pressure of the nozzle, which reduces the flow rate and speed.



High pressure swivelling aluminium alloy coupling with hard anodisation.
It offers a 15% reduction of the recoil force withstood by the nozzle operator.



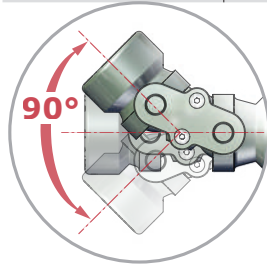
Material: aluminium
Surface treatment: hard anodisation

Patented system
n° 13 60071,
dated February 12, 2016,
ref. FR 3 011 905

Unidirectional swivelling elbows for high pressure hand nozzles



Inlet	Outlet	Maximum working pressure	Waterway Ø	Weight (kg)	Ref.
1" female BSP	Ballgroove	40 bar	20mm	0.4	33764
1.5" female BSP	1.5" male BSP	40 bar	40mm	0.6	37344
1.5" female NST-NH	1.5" male NST-NH	40 bar	40mm	0.7	42303

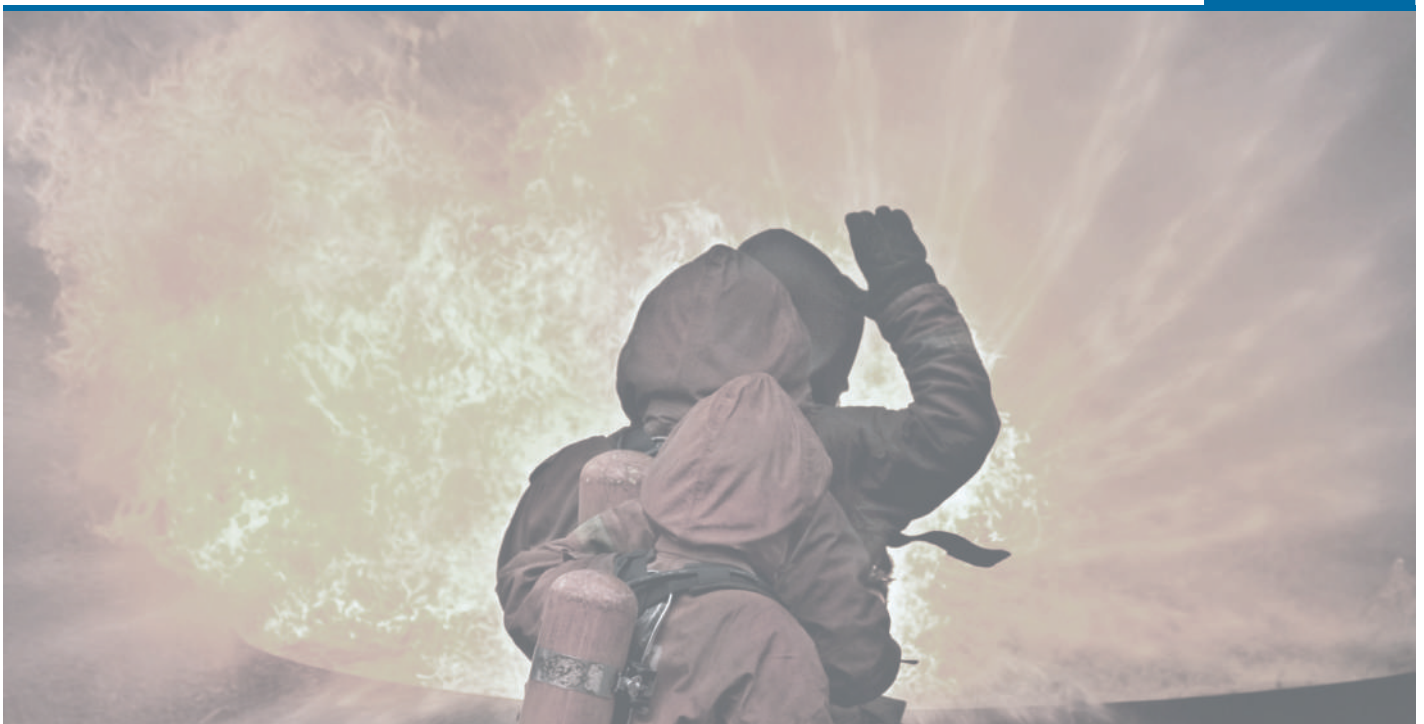


Bidirectional swivelling elbows for high pressure hand nozzles



Inlet	Outlet	Maximum working pressure	Waterway Ø	Weight (kg)	Ref.
1.5" female BSP	1.5" male BSP	40 bar	40mm	0.6	37347
1.5" female NST-NH	1.5" male NST-NH	40 bar	40mm	0.8	37367
1.5" female NPSH	1.5" male NPSH	40 bar	40mm		37370

Hand nozzles



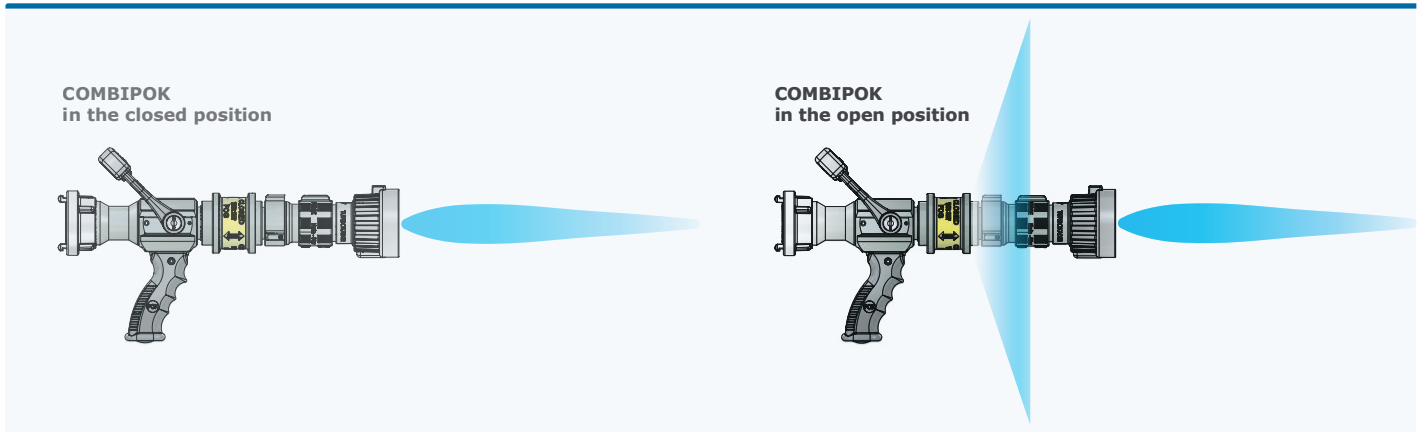
DESCRIPTION

COMBINING STRAIGHT SPRAY AND WATER WALL makes it possible to attack the fire and protect the operator at the same time.

Attacking igniting products with a straight spray allows to douse it and extinguish the fire quickly. However, the intense heat released by the fire forces the nozzle holder to remain at a distance limiting the effect of the water spray.

The incorporated water shield in the nozzle ensures the protection of the hand nozzle operator against radiant heat and freshens the air, cooling the environment of the nozzle operator. At the same time, the straight spray allows an optimal attack of the fire.

The simultaneous spray and screen combination was first mass-produced in Germany more than 100 years ago. **The COMBIPOK is the modern solution to an old problem.**



TECHNICAL CHARACTERISTICS

- The water screen is switched on by pulling the operating ring (for Combipok I), or turning the operating ring (for Combipok II).
- The screen is turned off by reversing the previous operation.
- **Waterway diameter of the device:** Ø35 (1" 3/8).
- **Water flow rate of the waterwall:** 350 lpm at 6 bar (100 GPM @ 100 PSI).
- Made of aluminum alloy (cut from a solid bar).
- Is mounted on a shutoff valve with a water passage diameter of Ø35, pistol grip, "Open - Closed" operating handle, ball valve made of 30% glass-filled rislan, inlet coupling as required.
- **Different nozzles available at the outlet:**
 - Ø 3/8", Ø 1/2", Ø 5/8", Ø 3/4", Ø 7/8", Ø 15/16" and Ø 1"
 - Ø 9 mm , Ø 12 mm , Ø 16 mm , Ø 19 mm , Ø 22 mm , Ø 24 mm and Ø 25 mm.

The straight spray can be replaced by an automatic tip transforming the hand nozzle into a nozzle combining multiple spray patterns and a protective waterwall.

COMBIPOK I



Inlet	Outlet	Weight (kg)	Ref.
1.5" female NST-NH	1.5" male NST-NH	0.6	14196
1.5" male BSP	1.5" female BSP	0.6	14213
1.5" female NPSH	1.5" male NPSH	0.6	14300

COMBIPOK II



Inlet	Outlet	Weight (kg)	Ref.
1.5" female NST-NH	1.5" male NST-NH	0.6	14476
1.5" female NPSH	1.5" male NPSH	0.6	14483
1.5" female BSP	1.5" male BSP	0.6	16079

Our range of foam heads has been designed to equip all our hand nozzles. They are available in different dimensions: 150, 500, 750 and 1000 lpm. There are two main categories: low and medium expansion. It is simple to use, and a clamping system ensures safety during its operation.

Maximum working pressure: PN16
Material: aluminium alloy
Surface treatment: polyester coating
Body type: molded

Low expansion foam attachment series 150



Description	External head sheath diameter (mm)	Weight (kg)	Ref.
Expansion foam attachment for cylindrical heads <u>Compatible with hand nozzles:</u> Debikador 150, Turbokador 150, Autokador 150, Tornadomatic 150, Pokatak 150, Pokador 150, Flash	70	0.5	09294
Expansion foam attachment for domed heads <u>Compatible with hand nozzles:</u> Magikador 150, Maximatic 150, Pokinor150	78	0.5	24985

Low expansion foam attachment series 500



Description	External head sheath diameter (mm)	Weight (kg)	Ref.
Expansion foam attachment for cylindrical heads <u>Compatible with hand nozzles:</u> Magikador 500, Debikador 500, Turbokador 500, Turbokabronze 500, Turbokador 500 for electrical fire (High Voltage Diffuser) marine version, Galaxie, Maximatic 500, Autokador 500, Tornadomatic 500, Pokinor 500, Pokatak 500, Pokador 500, Pokabronze 500	93	0.9	09297

Low expansion foam attachment for "Legende" 400 and 500



Description	External head sheath diameter (mm)	Weight (kg)	Ref.
Expansion foam attachment for cylindrical heads <u>Compatible with hand nozzles:</u> Legende 500 red tip, Legende with fixed flow	96	0.9	40508
Expansion foam attachment for cylindrical heads <u>Compatible with hand nozzles:</u> Spanish & Italian marine Legende, Legende 400 Combined stream pattern	75	0.6	47945

Low expansion foam attachment for domed heads



Description	External head sheath diameter (mm)	Weight (kg)	Ref.
Expansion foam attachment for domed heads <u>Compatible with hand nozzles:</u> Magikador 750, Legende 600 (molded teeth), Legende 750 with combined stream pattern	120	1.5	25010

Low expansion foam attachment series 600, 750 and 1000



Description	External head sheath diameter (mm)	Weight (kg)	Ref.
Expansion foam attachment for cylindrical heads <u>Compatible with hand nozzles:</u> Magikador 750 & 1000*, Debikador 750 & 1000*, Turbokador 750 & 1000*, Slide-O-Matic 600, Legende 600 cut teeth, Pokabronze 1000, Chinajet	114	1.5	27487
Expansion foam attachment for cylindrical heads <u>Compatible with hand nozzles:</u> Legende 750 and 1000	132.5	1.6	25015
Expansion foam attachment for cylindrical heads <u>Compatible with hand nozzles:</u> Magikador 1000*, Debikador 1000*, Turbokador 1000*, Autokador 750 & 1000, Tornadomatic 750 & 1000, Pokatak 750 & 1000, Pokador 750 & 1000	126	1.9	09300

*Refer to the reference tables of the hand nozzles to identify the appropriate foam head

Medium expansion foam attachment series 150



Description	External sheath diameter (mm)	Weight (kg)	Ref.
Expansion foam attachment for cylindrical heads <u>Compatible with hand nozzles:</u> Debikador 150, Turbokador 150, Autokador 150, Tornadomatic 150, Pokatak 150, Pokador 150, Flash	70	1.4	09712

Medium expansion foam attachment series 500



Description	External sheath diameter (mm)	Weight (kg)	Ref.
Expansion foam attachment for cylindrical heads <u>Compatible with hand nozzles:</u> Magikador 500, Debikador 500, Turbokador 500, Turbokabronze 500, Turbokador 500 for electrical fire (High Voltage Diffuser) marine version, Galaxie, Maximatic 500, Autokador 500, Tornadomatic 500, Pokinor 500, Pokatak 500, Pokador 500, Pokabronze 500	93	2.8	09713

Medium expansion foam attachment series 500



Description	External sheath diameter (mm)	Weight (kg)	Ref.
Expansion foam attachment for domed heads <u>Compatible with hand nozzles:</u> Legende 500 red tip, Legende with fixed flow	96	2.9	42101

Medium expansion foam attachment series 750 and 1000



Description	External sheath diameter (mm)	Weight (kg)	Ref.
Expansion foam attachment for cylindrical heads <u>Compatible with hand nozzles:</u> Magikador 750 & 1000*, Debikador 750 & 1000*, Turbokador 750 & 1000*, Slide-O-Matic 600, Legende 600 cut teeth, Pokabronze 1000, Chinajet	114	3.7	44308
Expansion foam attachment for cylindrical heads <u>Compatible with hand nozzles:</u> Magikador 1000*, Debikador 1000*, Turbokador 1000*, Autokador 750 & 1000, Tornadomatic 750 & 1000, Pokatak 750 & 1000, Pokador 750 & 1000	126	2.9	09714

*Refer to the reference tables of the hand nozzles to identify the appropriate foam head

Nozzle branchpipe adapters



The range of nozzle branchpipe adapters is available in aluminium alloy or in bronze for diameters from 20 to 100. Composed of a fixed inlet coupling and a male thread at the outlet, they are designed to receive a conical nozzle or a diffuser.

It is also available in versions with locking couplings in compliance with current standards.

Aluminium alloy nozzle branchpipe adapters



Maximum working pressure: PN16
Material: aluminium alloy

Conform to standard
NF S 61-820

Inlet	Waterway Ø (mm)	Dimensions (mm)	Weight (kg)	Ref.
SG DN20	20/10	192 x 35 x 49	0.22	03583
GFR DN20	20/10	185 x 49 x 49	0.25	03790
Express coupling DN20	20/10		0.27	02489
SG DN40	40/20	180 x 54 x 75	0.33	02430
SG DN40 with lock	40/20	220 x 73 x 61	0.45	33773
DSP DN40	40/20	180 x 54 x 75	0.32	02607
Extra long DSP DN40	40/25	437 x 54 x 75	0.62	01593
DSP DN65	65/40	455 x 83 x 110	1,1	47058
DSP DN65 with lock	65/40			01918.AV
AR DN100 with lock*	100/40			03200

*Civil defense type, with two folding grips

Bronze nozzle branchpipe adapters



Maximum working pressure: PN16
Material: bronze

Conform to standard
NF S 61-820

Inlet	Waterway Ø (mm)	Dimensions (mm)	Weight (kg)	Ref.
SG DN20	20/10	142 x 46 x 31	0.31	02198
GFR DN20	20/10	157 x 52 x 52	0.45	02200
Ribbed tail Ø25	20/10	180 x 43 x 43	0.3	01890
SG DN40	40/20	177 x 64 x 54	0.7	45002
Rigged tail Ø35	40/20	180 x 43 x 43	0.55	01879
SG DN65	65/40	325 x 104 x 83	1.9	02432

Red colour polyamid nozzle branchpipe adapters



Maximum working pressure: PN16
Material: aluminium alloy and polyamid

Conform to standard
DIN 14 365

Inlet	Waterway Ø (mm)	Dimensions (mm)	Weight (kg)	Ref.
3/4" BSP male	20/6		0.06	08379
1.25" male BSP	33/9		0.24	08380

Adjustable flow rate and stream patterns hand nozzles



The range of smooth bores is available in aluminium alloy, brass, or bronze, and is designed to fit at the end of a nozzle branchpipe, a fire hose, or a monitor, in order to obtain a straight spray.

Smooth bores in aluminium alloy, ISO thread



Maximum working pressure: PN16
Material: aluminium alloy

Inlet	Outlet Ø (mm)	Dimensions (mm)	Weight (kg)	Ref.
ISO M36 x 200 female	40/12	Ø42 x 64	0.09	07270
ISO M36 x 200 female	40/14	Ø42 x 64	0.08	02366
ISO M52 x 300 female	65/18	Ø64 x 86		02431
ISO M52 x 300 female	65/25	Ø69 x 140		02192
ISO M52 x 300 female	100/25	Ø60 x 100	0.27	07271

Smooth bores in aluminium alloy, BSP thread



Maximum working pressure: PN16
Material: aluminium alloy

Inlet	Outlet Ø (mm)	Dimensions (mm)	Weight (kg)	Ref.
1" female BSP	8	Ø50 x 100	0.27	25884
1" female BSP	12.7	Ø50 x 100	0.27	25885

Smooth bores in aluminium alloy, NST-NH thread



Maximum working pressure: PN16
Material: aluminium alloy
Surface treatment: hard anodisation

Inlet	Waterway Ø		Dimensions (mm)	Weight (kg)	Ref.
	Inches	mm			
1" female NST-NH	3/8"	9	Ø45 x 90	0.15	17154
1" female NST-NH	1/4"	6	Ø45 x 90	0.16	17155
1" female NST-NH	3/16"	5	Ø45 x 90	0.16	17156
1" female NST-NH	1/2"	12	Ø50 x 100	0.26	01546
1" female NST-NH	5/8"	16	Ø50 x 100	0.25	01612
1" female NST-NH	3/4"	19	Ø50 x 100	0.24	01703
1.5" female NST-NH	3/8"	9	Ø57x115	0.3	17160
1.5" female NST-NH	1/2"	12	Ø57x115	0.21	17161
1.5" female NST-NH	5/8"	16	Ø57x115	0.29	17162
1.5" female NST-NH	1"	25	Ø57x115	0.27	17163
1.5" female NST-NH	1/2"	12	Ø60 x 110	0.36	01566
1.5" female NST-NH	3/4"	19	Ø60 x 110	0.34	01704
1.5" female NST-NH	15/16"	24	Ø60 x 110	0.33	01537
1.5" female NST-NH	1"	25	Ø60 x 110	0.30	01536
1.5" female NST-NH	1,25"	32	Ø60 x 110	0.25	08947
1.5" female NST-NH	1"3/8	35	Ø60 x 110	0.28	08278

Smooth bores in aluminium alloy, NPSH thread



Maximum working pressure: PN16
Material: aluminium alloy
Surface treatment: hard anodisation

Inlet	Waterway Ø		Dimensions (mm)	Weight (kg)	Ref.
	Inches	mm			
1" female NPSH	3/8"	9	Ø45 x 90	0.16	17157
1" female NPSH	1/4"	6	Ø45 x 90	0.16	17158
1" female NPSH	3/16"	5	Ø45 x 90	0.16	17159
1" female NPSH	1/2"	12	Ø50 x 100	0.27	30503
1.5" female NPSH	3/8"	9	Ø57x115	0.31	17164
1.5" female NPSH	1/2"	12	Ø57x115	0.3	17165
1.5" female NPSH	5/8"	16	Ø57x115	0.3	17166
1.5" female NPSH	1"	25	Ø57x115	0.27	17167

Smooth bores in bronze, ISO thread



Maximum working pressure: PN16
Material: bronze

Inlet	Outlet Ø (mm)	Dimensions (mm)	Weight (kg)	Ref.
ISO M24 x 200 female	20/6			07580
ISO M36 x 200 female	40/12			07581
ISO M52 x 300 female	65/18	Ø60 x 90	0.66	07582

Smooth bores in brass, ISO thread



Maximum working pressure: PN16
Material: brass

Inlet	Outlet Ø (mm)	Dimensions (mm)	Weight (kg)	Ref.
ISO M24 x 200 female	20/6	Ø35 x 52	0.14	03274

Accessories for COMBIPOK hand nozzles

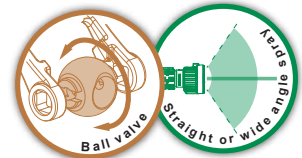


D.M.A. Diffusers



D.M.A. mixed diffusion valves with three positions: closed, wide angle spray, straight spray. They are designed to be screwed to the end of a nozzle branchpipe adapter, offering a light, high-performance nozzle.

Maximum working pressure: PN16
Shutoff: with ball valve
Stream pattern: closed, wide angle spray, straight spray
Opening: by operating handle
Material: aluminium alloy or bronze
Body type: molded
Options: nozzle branchpipe adapter, red or yellow plastic grip



Inlet	Waterway Ø (mm)	Dimensions (mm)	Aluminium		Bronze	
			Weight (kg)	Ref	Weight (kg)	Ref
ISO M24 x 200 female	25/8-8	93 x 95 x 139			1	32899
ISO M36 x 200 female	40/12-12		0.9	07330		
ISO M36 x 200 female	40/14-14	183 x 107 x 113			1.6	07683 *
ISO M52 x 300 female	65/18-15	183 x 107 x 113	0.9	07331		

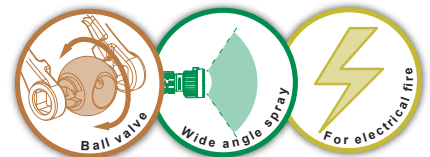
*MED homologation

D.M.A. Diffusers For electrical fire (High Voltage Diffuser)



D.M.A. Diffusers valves For electrical fire (High Voltage Diffuser) with two positions: closed and wide angle spray. They allow intervention on fire from electrical origin.

Maximum working pressure: PN16
Shutoff: with ball valve
Stream pattern: closed, wide angle spray
Opening: by operating handle
Material: aluminium alloy or bronze
Body type: molded
Options: nozzle branchpipe adapter, red or yellow plastic grip



Inlet	Waterway Ø (mm)	Dimensions (mm)	Aluminium		Bronze	
			Weight (kg)	Ref	Weight (kg)	Ref
ISO M24 x 200 female	25/8-8	93 x 95 x 139			1	35649
ISO M36 x 200 female	40/12-12	183 x 108 x 113	0.9	07332		07682
ISO M52 x 300 female	65/18-15	183 x 108 x 113		07333		

D.M.B. Diffusers



The D.M.B. mixed diffusion valves with three positions: closed, flat spray, straight spray. They are designed to be screwed to the end of a nozzle branchpipe adapter in order to obtain multiple possibilities of use depending on the circumstances of the fire.

Maximum working pressure: PN16
Shutoff: with ball valve
Stream pattern: closed, flat spray and straight spray
Opening: by operating handle
Material: aluminium alloy or bronze
Body type: molded
Options: nozzle branchpipe adapter, red or yellow plastic grip



Inlet	Waterway Ø (mm)	Dimensions (mm)	Aluminium		Bronze	
			Weight (kg)	Ref	Weight (kg)	Ref
ISO M24 x 200 female	20/8-8	109 x 78 x 95	0.4	07350		07360
ISO M36 x 200 female	40/12-12	140 x 85 x 97	0.5	02784	0.9	02837
ISO M52 x 300 female	65/18-15					07362
ISO M52 x 300 female	65/18-18	185 x 102 x 120	1.8	09285		

Multi-purpose nozzles

Nozzles for oil industry



Three position multi-purpose nozzles in PN16 aluminium alloy allowing to use them in a straight spray, wide angle spray, or closed position, configuration.



Multi-purpose nozzles, polyamid branchpipe



Maximum working pressure: PN16
Material: aluminium alloy and polyamid

Inlet	Waterway Ø (mm)	Dimensions (mm)	Weight (kg)	Ref.
Storz D/25	20	317 x 52 x 114	1.3	09841
1" male BSP	20		0.5	09840
Storz C/52	33		1.7	09837
2" male BSP	33		1.4	09782
2.5" male Instantaneous	33		1.7	16087

Multi-purpose nozzles, aluminium branchpipe



Maximum working pressure: PN16
Material: aluminium alloy

Inlet	Waterway Ø (mm)	Dimensions (mm)	Weight (kg)	Ref.
Storz C/52	33	446 x 98 x 162	1.4	11952
2" male BSP	33	414 x 60 x 133	1.2	13116
2.5" male Instantaneous	33	449 x 80 x 154	1.5	16088

Nozzle for oil industry

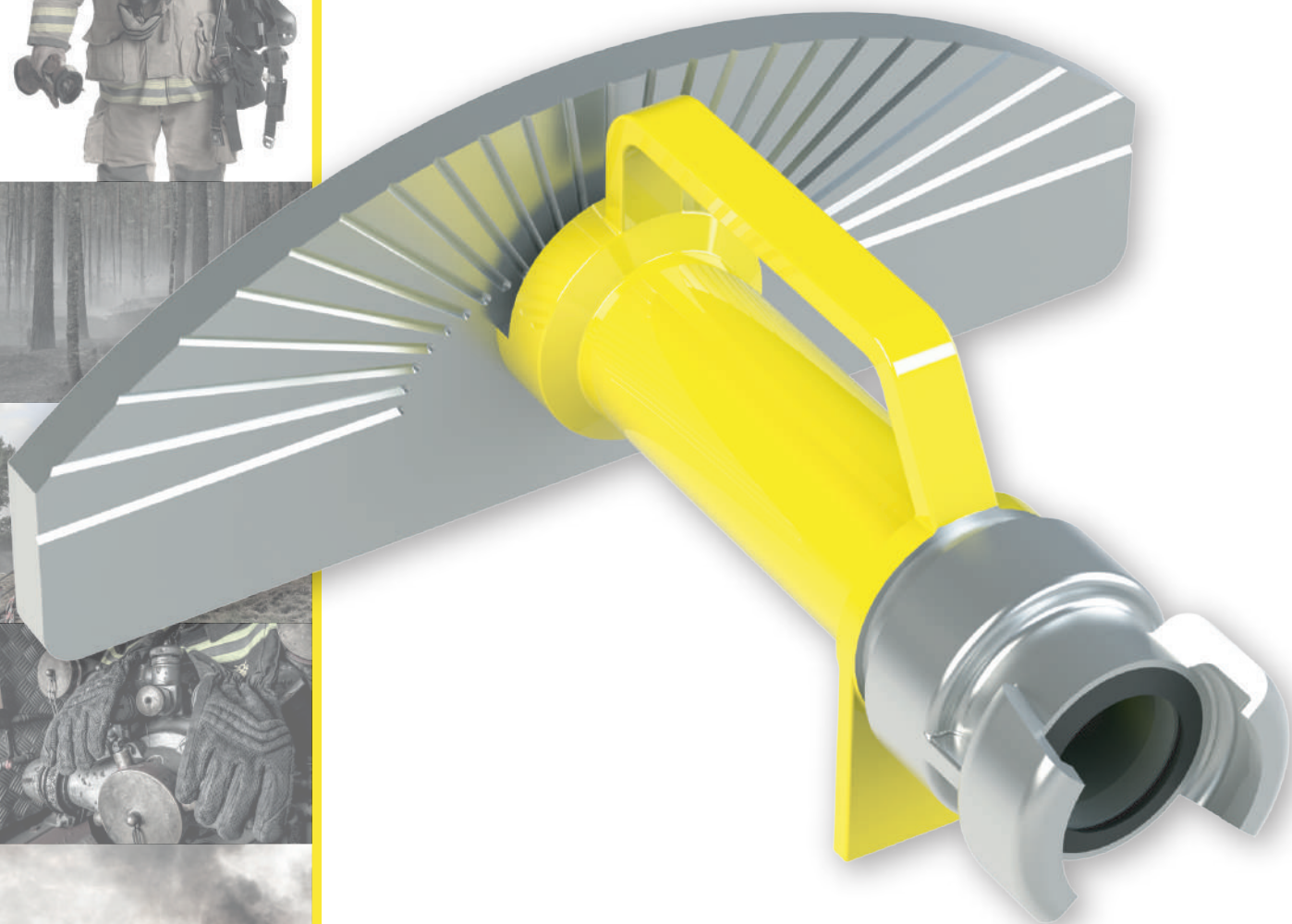


Maximum working pressure: PN16
Opening: by rotation of head ring
Material: bronze
Body type: molded



Inlet	Flow rate (lpm)	Working pressure (bar)	Dimensions (mm)	Weight (kg)	Ref.
2.5" male Instantaneous	450	6	167 x 93 x 93	2.7	20049





“Wildland” equipment

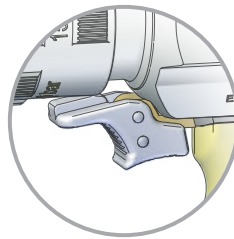
“Wildland” hand nozzles	90	“Wildland” 2-way dividers	98
“Wildland” diffusers	92	Spare parts for “Wildland” dividers.....	100
“Wildland” backp strapped pump-buckets	95	“Wildland” non-return valves.....	101
“Wildland” shutoffs	96	“Wildland” waterwall nozzles	101
“Wildland” T-valve	97		



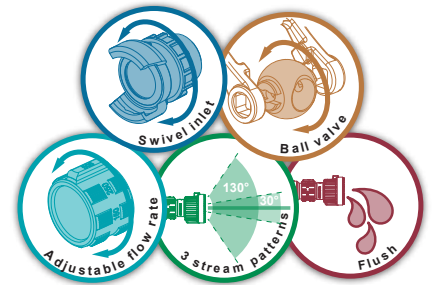
This range of products was designed to extinguish "wildland fires".
 The hand nozzles are equipped with a locking system allowing to switch from 150 to 250 lpm flow rate. 500 lpm and Flush positions can be used through voluntary action of the user using the trigger.
 The head ring with tactile markings allows different spray pattern selection (straight spray, flash over and wide angle spray).
 This range of nozzles is available with three different head types : Turbo (spinning teeth), Debi (cut teeth) or Magi (molded teeth).

Maximum working pressure: PN16
Shutoff: ball valve
Opening: by operating handle
Flush position: yes
Material: aluminium alloy
Surface treatment: hard anodisation
Body type : profile
Pistol grip : single

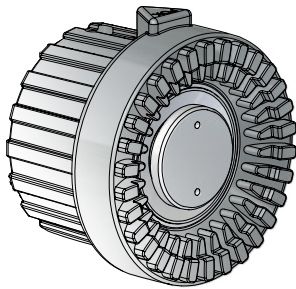
Sheath colours: ●



Trigger to unlock the flow rate

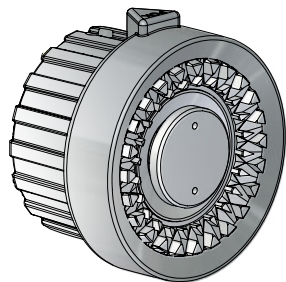


MAGIKADOR 500



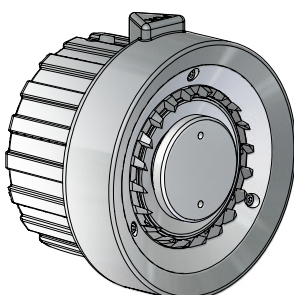
Inlet	Flow rate	Working pressure	Dimensions (mm)	Weight (kg)	Ref.
DSP DN40	150-250-500 lpm	6 bar	312 x 126 x 266	2.6	25533

DEBIKADOR 500



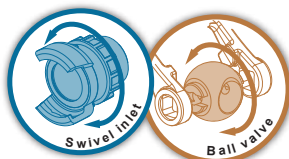
Inlet	Flow rate	Working pressure	Dimensions (mm)	Weight (kg)	Ref.
DSP DN40	150-250-500 lpm	6 bar	312 x 126 x 266	2.6	28697

TURBOKADOR 500



Inlet	Flow rate	Working pressure	Dimensions (mm)	Weight (kg)	Ref.
DSP DN40	150-250-500 lpm	6 bar	312 x 126 x 266	2.6	28066

ROBATFLAM 100 lpm



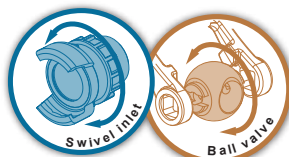
Maximum working pressure: PN16
Shutoff: ball valve
Opening: by operating handle
Material: aluminium
Surface treatment: hard anodisation
Body type : profile
Diffusion Diffusion head: molded teeth

Sheath colours: ● ●

Our range of Robotflam hand nozzles allies simplicity and resilience. The equipment is made of a shutoff hand nozzle fit with an adjustable stream pattern BatWfam diffuser, allowing for a straight spray, or diffusion spray with adjustable opening.

Inlet	Flow rate	Working pressure	Dimensions (mm)	Weight (kg)	Ref.
Swivelling 1" male BSP	100 lpm	6 bar	221 x 95 x 236	1.2	16214
Swivelling 1" female BSP	100 lpm	6 bar	206 x 95 x 236	1.2	09012 09012.JAUNE
Swivelling female GFR DN20	100 lpm	6 bar	251 x 95 x 236	1.3	02215 02215.JAUNE
Swivelling DSP DN40	100 lpm	6 bar	265 x 95 x 236	1.4	02216
Swivelling 1" female NST-NH	100 lpm	6 bar	206 x 95 x 236	1.2	03167
Swivelling 1.5" female NST-NH	100 lpm	6 bar	223 x 95 x 236	1.2	03168

ROBATFLAM 225 lpm



Maximum working pressure: PN16
Shutoff: ball valve
Opening: by operating handle
Material: aluminium
Surface treatment: hard anodisation
Body type : profile
Diffusion head: smooth

Sheath colours: ●

Our range of Robotflam hand nozzles allies simplicity and resilience. The equipment is made of a shutoff hand nozzle fit with an adjustable stream pattern diffuser, allowing for an adjustable flow rate straight spray, or diffusion spray with adjustable opening.

Inlet	Flow rate	Working pressure	Dimensions (mm)	Weight (kg)	Ref.
Swivelling 1.5" female NST-NH	225 lpm	6 bar	195 x 126 x 266	1.7	12349

"Wildland" diffusers DN20 with grip



Maximum working pressure: PN16
Material: aluminium
Surface treatment: hard anodisation
Diffusion head: molded teeth

Sheath colours: ●

Fixed flow rate 100 lpm "Wildland" DN20 diffuser equipped with a grip. Stream patterns are adjustable by rotating the head sheath (straight spray, flashover and wide angle spray). Material: anodised aluminium alloy with elastomer head sheath.

Inlet	Flow rate	Working pressure	Dimensions (mm)	Weight (kg)	Ref.
GFR female DN20	100 lpm	6 bar	Ø63,5 x 323	0.89	18658
SG DN20	100 lpm	6 bar	Ø63,5 x 306	0.8	18659

"Wildland" diffusers DN40 with grip



Maximum working pressure: PN16
Material: aluminium
Surface treatment: hard anodisation
Diffusion head: smooth

Sheath colours: ● ●

Fixed flow rate 225 lpm "Wildland" DN40 diffuser equipped with a grip. You can go from the "closed" position to "straight spray" or to "wide angle spray" by adjusting the diffusion angle by rotating the elastomer head ring. Material: aluminium alloy anodisation

Inlet	Flow rate	Working pressure	Dimensions (mm)	Weight (kg)	Ref.
1" male BSP	225 lpm	6 bar	Ø70 x 231	0.5	12048 12048.J
Greek Storz DN45	240 lpm	6 bar	Ø88 x 335	1.1	42011
Storz NEN DN65	400 lpm	6 bar	Ø118 x 338	1.2	42012

"Wildland" aluminium diffusers



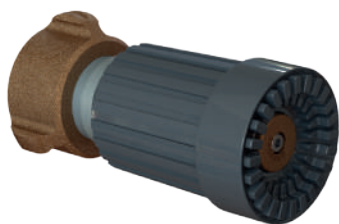
Maximum working pressure: PN16
Material: aluminium
Surface treatment: hard anodisation
Diffusion head: smooth

Sheath colours: ●

Our range of "wildland" diffusers in anodised aluminium alloy with fixed flow rate combines lightness and simplicity. Many flow rates are available: from 40 to 225 lpm at 6 bar. Stream patterns are adjustable by rotating the head sheath (straight spray, flashover and wide angle spray). These diffusers have a smooth head sheath. Our diffusers are available with various inlet couplings.

Inlet	Flow rate	Working pressure	Dimensions (mm)	Weight (kg)	Ref.
GFR female DN20	40 lpm	6 bar	Ø70 x 133	0.46	12600
GFR female DN20	75 lpm	6 bar	Ø70 x 133	0.46	12601
GFR female DN20	115 lpm	6 bar	Ø70 x 133	0.46	12602
GFR female DN20	150 lpm	6 bar	Ø70 x 133	0.46	12603
SG DN40	225 lpm	6 bar	Ø74 x 166	0.56	12604

Batflam brass diffuser

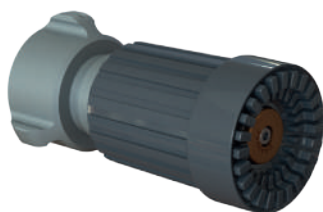


Maximum working pressure: PN16
 Material: brass
 Diffusion head: molded teeth
 Sheath colours: ●

Our fixed flow rate 100 lpm brass Batflam diffuser is designed to extinguish "wildland" fires. Stream patterns are adjustable by rotating the head sheath (straight spray, flashover and wide angle spray). It is equipped with anti-shock rubber teeth. Our diffuser is available with various inlet couplings.

Inlet	Flow rate	Working pressure	Dimensions (mm)	Weight (kg)	Ref.
ISO M36 x 200 female	100 lpm	6 bar			02213

Batflam aluminium diffusers



Maximum working pressure: PN16
 Material: aluminium
 Surface treatment: hard anodisation
 Diffusion head: molded teeth
 Sheath colours: ● ●

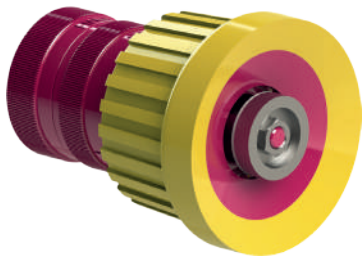
Our fixed flow rate 100 lpm aluminium alloy Batflam diffuser is designed to extinguish "wildland" fires. Stream patterns are adjustable by rotating the head sheath (straight spray, flashover and wide angle spray). It is equipped with anti-shock rubber teeth. Our diffuser is available with various inlet couplings.

Inlet	Flow rate	Working pressure	Dimensions (mm)	Weight (kg)	Ref.
1" male BSP	100 lpm	6 bar	Ø56 x 98	0.31	16094 16094.J
1" female NST-NH	100 lpm	6 bar	Ø63,5 x 118	0.44	03182

"PIL" hose



1" diffusers with head sheath



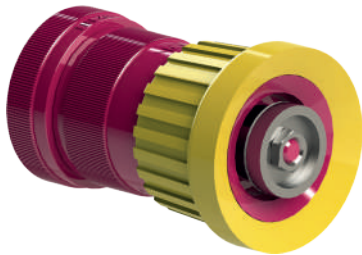
Maximum working pressure: PN16
Material: aluminium
Surface treatment: hard anodisation
Diffusion head: smooth

Sheath colours:

Our 1" "wildland" diffuser with elastomer head sheath is made of anodised aluminium alloy. It is conform with specifications 5100-239c. It offers dual flow rates of 10 and 24 GPM at 100 PSI and two wide angle spray patterns by rotating the head ring. Several inlet couplings are available.

Inlet	Flow rate	Working pressure	Dimensions (mm)	Weight (kg)	Ref.
1" female NPSH	10-24 GPM	100 PSI	Ø70 x 90	0.33	17991
1" female NST-NH	10-24 GPM	100 PSI	Ø70 x 90	0.33	18403

1.5" diffusers with head sheath



Maximum working pressure: PN16
Material: aluminium
Surface treatment: hard anodisation
Diffusion head: smooth

Sheath colours:

Our 1.5" wildland diffuser with elastomer head sheath is made of anodised aluminium alloy. It is conform with specifications 5100-239c. It offers dual flow rates of 20 and 60 GPM at 100 PSI and two wide angle spray patterns by rotating the head ring. Several inlet couplings are available.

Inlet	Flow rate	Working pressure	Dimensions (mm)	Weight (kg)	Ref.
1.5" female NST-NH	20-60 GPM	100 PSI	Ø70 x 105	0.42	17506
1.5" female NPSH	20-60 GPM	100 PSI	Ø70 x 105	0.43	17754

FIREBUSTER



Description	Weight (kg)	Ref.
Backpack fire pump-bucket 20 litres	6.3	25039

Our backpack fire pump "Firebuster" for "wildland" fires is equipped with a harness, allowing to walk a long distance in the forest with reduced fatigue. It is made with a high density 20 liter polyethylene tank. It comes with a brass hand pump, with a diffuser that allows to get a straight spray, or a conic shape spray, by rotating the head ring, with adjustable spray angle. It can be delivered with a trolley allowing effortless transportation.

Portable monitors

